

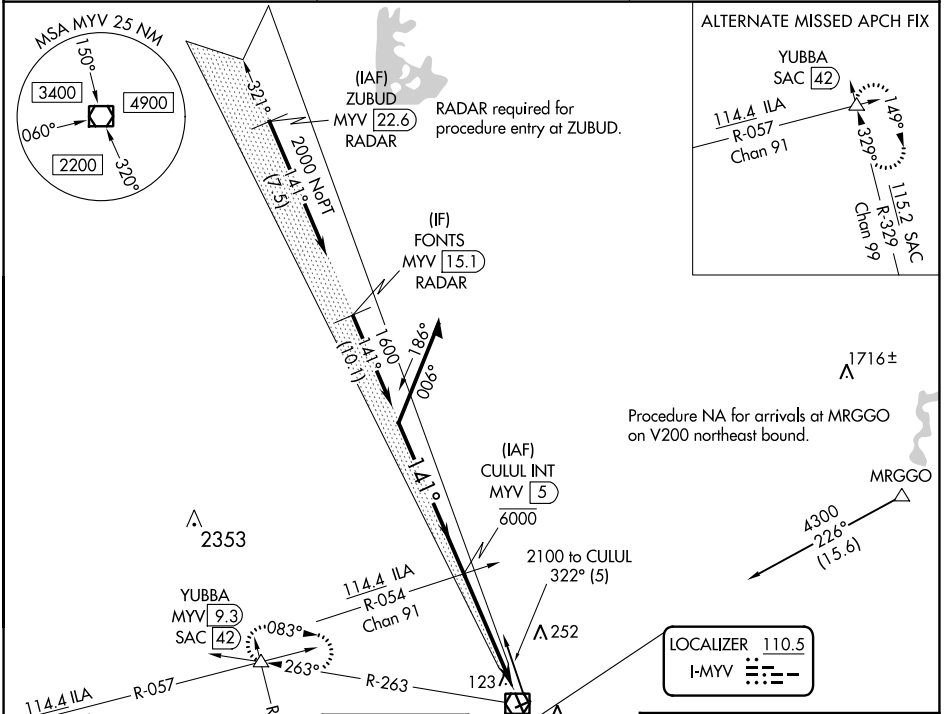
LOC I-MYV <b>110.5</b>	APP CRS <b>141°</b>	Rwy Idg <b>6007</b> TDZE <b>64</b> Apt Elev <b>64</b>
---------------------------	------------------------	---

# ILS or LOC RWY 14

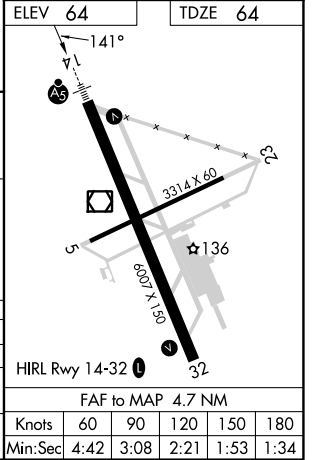
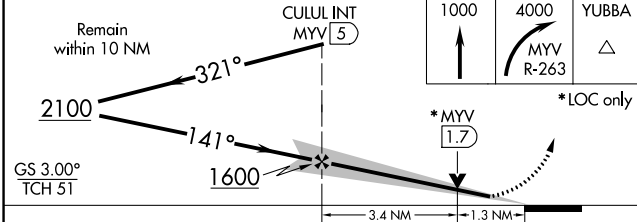
YUBA COUNTY (MYV)

<p><b>NA</b> Circling Rwy 5, 23 NA at night. Autopilot coupled approach NA below 695.</p>	<p><b>MALSR</b></p>	<p><b>MISSED APPROACH:</b> Climb to 1000 then climbing right turn to 4000 on MYV VOR/DME R-263 to YUBBA INT/ MYV 9.3 DME and hold, continue climb in hold to 4000.</p>
---	---------------------	--

ASOS <b>118.475</b>	NORCAL APP CON <b>125.4 259.1</b>	UNICOM <b>123.05 (CTAF)</b>
------------------------	--------------------------------------	--------------------------------



ELEV <b>64</b>	TDZE <b>64</b>
----------------	----------------



CATEGORY	A	B	C	D
S-ILS 14	264-1/2 200 (200-1/2)			
S-LOC 14	520-1/2	456 (500-1/2)	520-7/8	456 (500-7/8)
<b>CIRCLING</b>	540-1	476 (500-1)	560-1 1/2 496 (500-1 1/2)	620-2 556 (600-2)

FAF to MAP 4.7 NM					
Knots	60	90	120	150	180
Min:Sec	4:42	3:08	2:21	1:53	1:34

SW-2, 13 JUN 2024 to 11 JUL 2024

SW-2, 13 JUN 2024 to 11 JUL 2024