

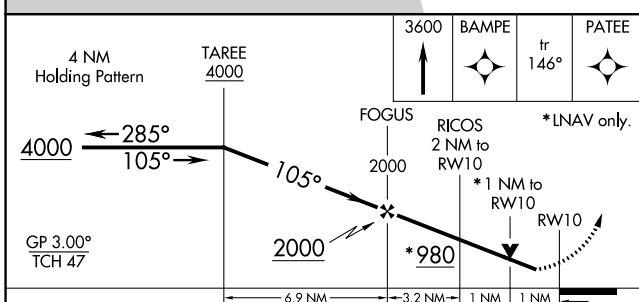
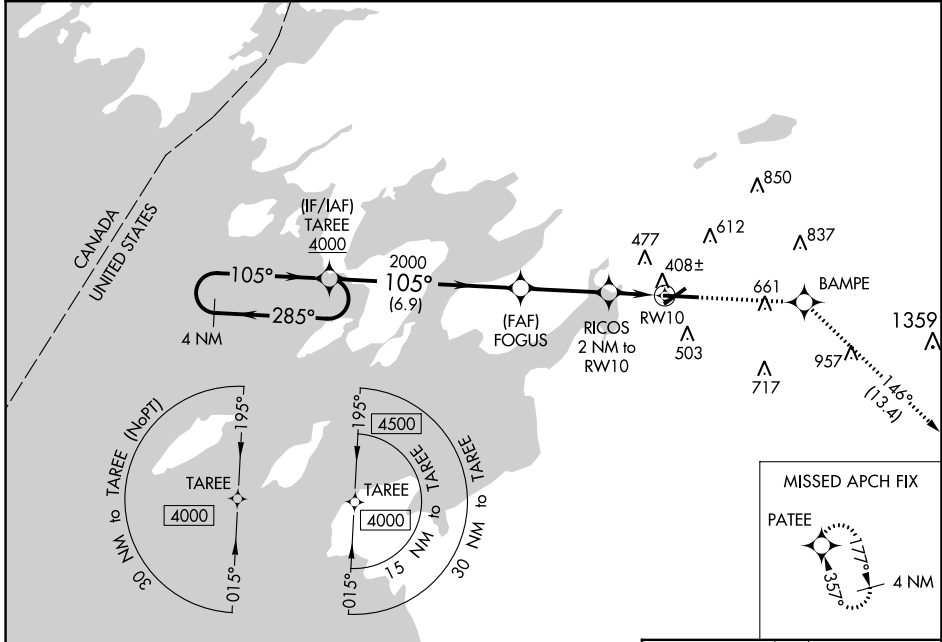
WAAS CH <b>53522</b> <b>W10A</b>	APP CRS <b>105°</b>	Rwy Idg TDZE Apt Elev	<b>7001</b> <b>318</b> <b>331</b>
--	------------------------	-----------------------------	---

# RNAV (GPS) RWY 10

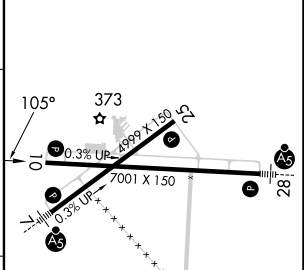
WATERTOWN INTL (ART)

RNP APCH.	MISSED APPROACH: Climb to 3600 direct BAMPE and on track 146° to PATEE and hold.
<b>⚠</b>	For uncompensated Baro-VNAV systems, LNAV/VNAV NA below -20°C or above 54°C. Rwy 10 helicopter visibility reduction below 3/4 SM NA.

ASOS <b>132.325</b>	KGTB ATIS <b>119.525</b>	WHEELER-SACK APP CON <b>124.875 257.6 307.125</b>	CLNC DEL <b>120.8</b>	UNICOM <b>123.0 (CTAF) <b>0</b></b>
------------------------	-----------------------------	--	--------------------------	--



ELEV	331	<b>D</b>	TDZE	318
------	-----	----------	------	-----



CATEGORY	A	B	C	D
LPV DA		568-3/4	250 (300-3/4)	
LNNAV/VNAV DA		578-3/4	260 (300-3/4)	
LNNAV MDA		660-1	342 (400-1)	
<b>C</b> CIRCLING	960-1	629 (700-1)	980-1 3/4 649 (700-1 3/4)	1080-2 1/2 749 (800-2 1/2)

HIRL Rwy 7-25 <b>0</b>
MIRL Rwy 10-28 <b>0</b>

NE-2, 13 JUN 2024 to 11 JUL 2024

NE-2, 13 JUN 2024 to 11 JUL 2024