

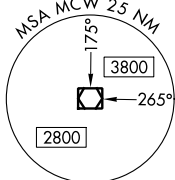
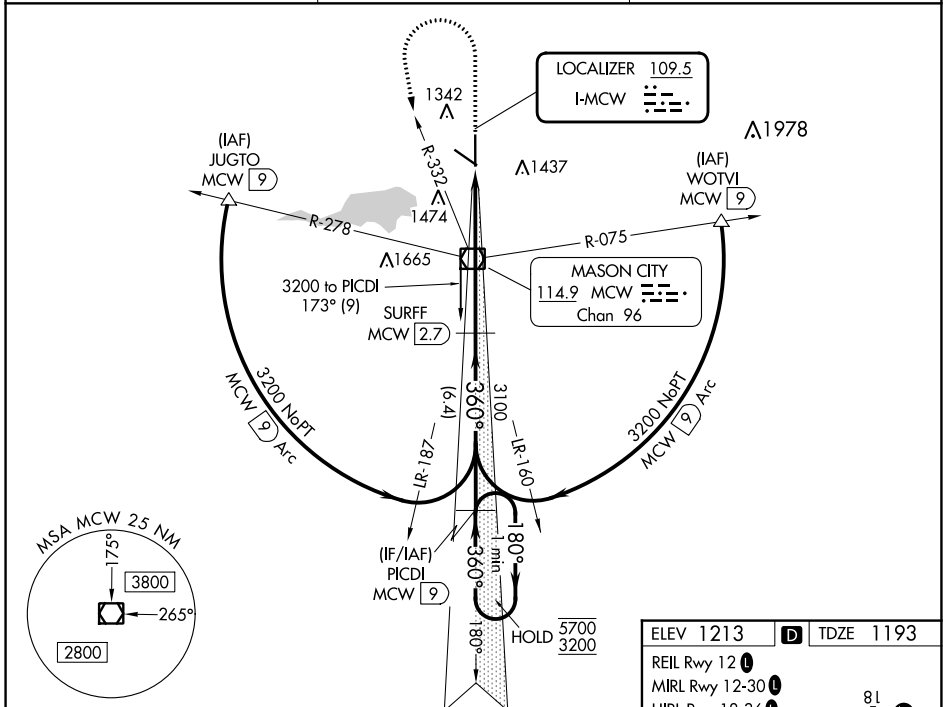
LOC I-MCW <b>109.5</b>	APP CRS <b>360°</b>	Rwy ldg <b>6401</b>
		TDZE <b>1193</b>
		Apt Elev <b>1213</b>

# ILS or LOC RWY 36

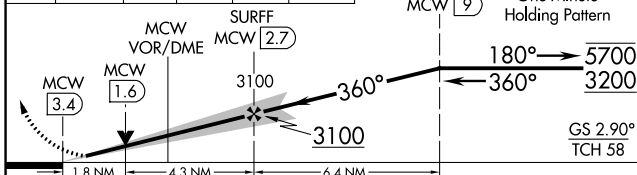
MASON CITY MUNI (MCW)

DME required.	MALSR	MISSED APPROACH: Climb to 2900 then climbing left turn to 3200 on heading 170° and MCW R-332 to MCW VOR/DME and on MCW R-173 to PICDI/MCW VOR/DME 9 DME and hold.
<p>▼ For inoperative ALS, increase S-LOC 36 Cats C and D visibility to 1¾ SM. DME from MCW VOR/DME. DME use requires simultaneous reception of I-MCW and MCW DME.</p> <p>▲</p>		

ASOS <b>120.3</b>	MINNEAPOLIS CENTER <b>127.3 257.675</b>	UNICOM <b>123.0 (CTAF) 0</b>
----------------------	--	---------------------------------

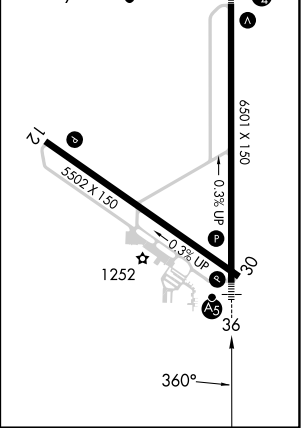


2900	3200	MCW R-332	MCW R-173	PICDI MCW 9	VGSI and ILS glidepath not coincident (VGSI Angle 2.90/TCH 62).
↑	hdg 170°	MCW VOR/DME	SURFF MCW 2.7	PICDI MCW 9	One Minute Holding Pattern



ELEV 1213	TDZE 1193
-----------	-----------

- REIL Rwy 12
- MIRL Rwy 12-30
- HIRL Rwy 18-36



CATEGORY	A	B	C	D
S-ILS 36	1393-½		200 (200-½)	
S-LOC 36	1800-½ 607 (600-½)		1800-1¾ 607 (600-1¾)	
CIRCLING	1800-1 587 (600-1)		1800-2 587 (600-2)	

NC-3, 13 JUN 2024 to 11 JUL 2024

NC-3, 13 JUN 2024 to 11 JUL 2024