

VOR/DME MCW 114.9 Chan 96	APP CRS 356°	Rwy Idg 6401 TDZE 1193 Apt Elev 1213
-----------------------------------------------	------------------------	-----------------------------------------------------------------

VOR RWY 36

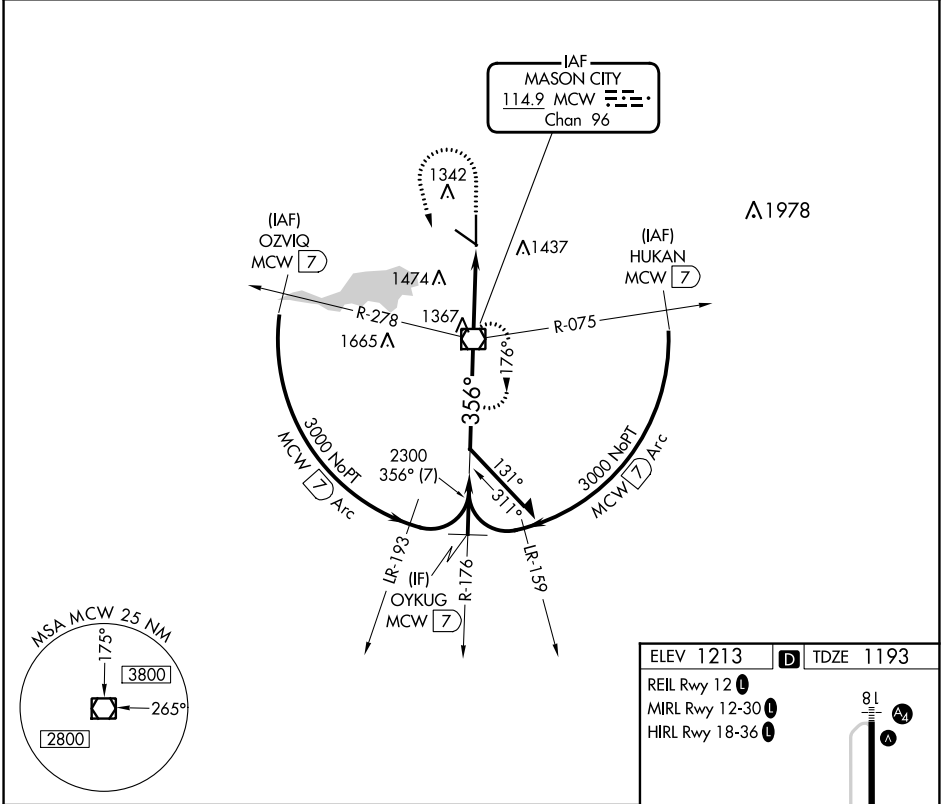
MASON CITY MUNI (MCW)

V VDP NA when using Charles City altimeter setting. When local altimeter setting not received, use Charles City altimeter setting and increase all MDA 100 feet and increase S-36 Cat C/D and Circling Cat C visibility ¼ mile.

A5 MALSR

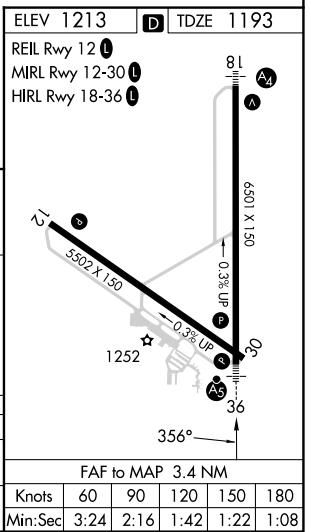
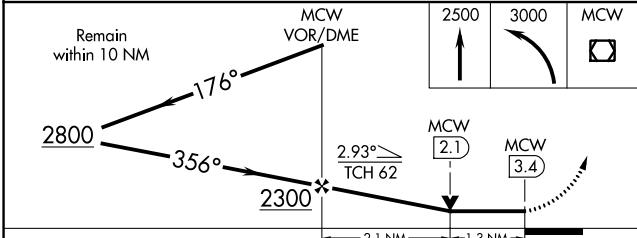
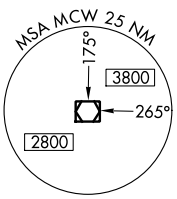
MISSED APPROACH: Climb to 2500 then climbing left turn to 3000 direct MCW VOR/DME and hold.

ASOS 120.3	MINNEAPOLIS CENTER 127.3 257.675	UNICOM 123.0 (CTAF)
----------------------	--------------------------------------------	-------------------------------



NC-3, 13 JUN 2024 to 11 JUL 2024

NC-3, 13 JUN 2024 to 11 JUL 2024



CATEGORY	A	B	C	D
S-36	1640- ³ / ₄	447 (500- ³ / ₄)	1640- ⁷ / ₈	447 (500- ⁷ / ₈)
CIRCLING	1680-1 467 (500-1)	1760-1 547 (600-1)	1780-1 ¹ / ₂ 567 (600-1 ¹ / ₂)	1780-2 567 (600-2)

FAF to MAP 3.4 NM					
Knots	60	90	120	150	180
Min:Sec	3:24	2:16	1:42	1:22	1:08