

| | | | |
|--|------------------------|-----------------------------|---|
| WAAS CH 97344 W13A | APP CRS 127° | Rwy Idg TDZE Apt Elev | 7510 5723 5759 |
|--|------------------------|-----------------------------|---|

RNAV (GPS) RWY 13

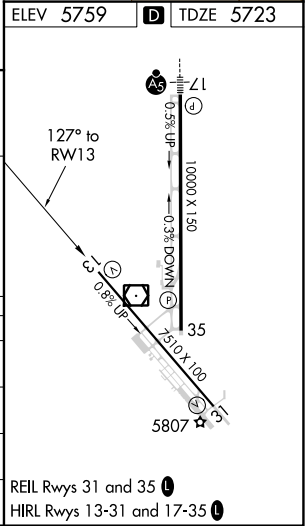
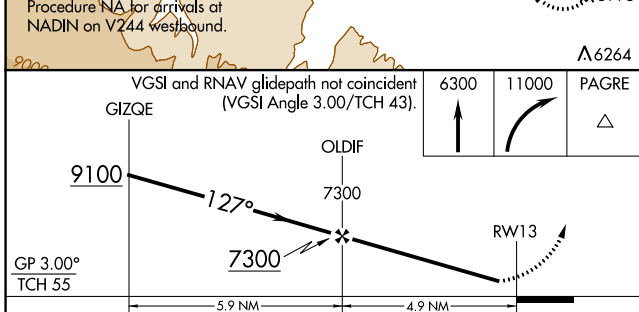
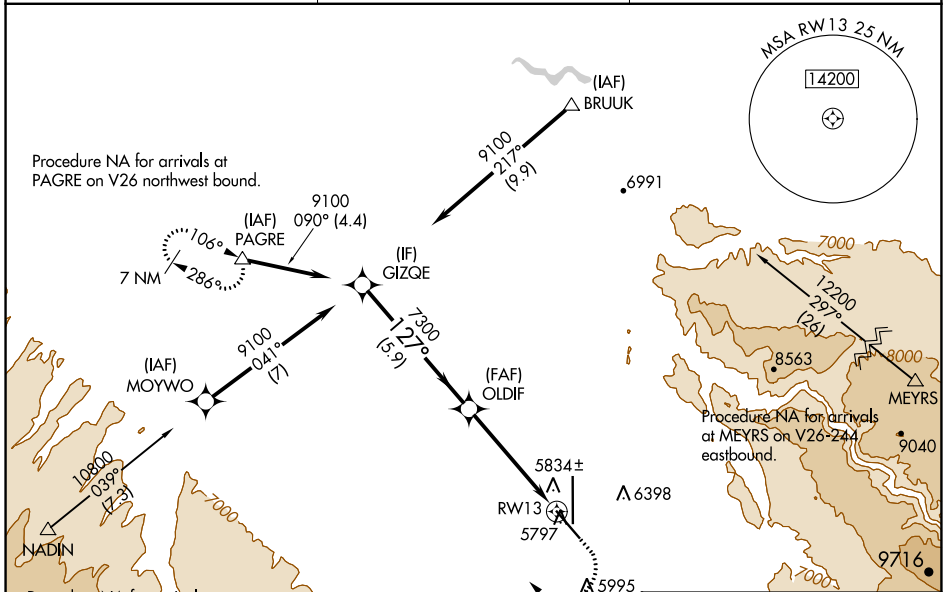
MONTROSE RGNL (MTJ)

RNP APCH.

⚠ Circling NA east of Rwy 17 and northeast of Rwy 31. Circling Rwy 31 NA at night. Rwy 13 helicopter visibility reduction below 1 SM NA. For uncompensated Baro-VNAV systems, LNAV/VNAV NA below -19°C or above 54°C. Straight-in/Circling Rwy 13 at night, operational VGSI required, remain on or above VGSI glidepath until threshold.

MISSED APPROACH: (Do not exceed 200K until PAGRE) Climb to 6300 then climbing right turn to 11000 direct PAGRE and hold, continue climb-in-hold to 11000.

| | | |
|------------------------|--------------------------------------|---------------------------------|
| ASOS 135.225 | DENVER CENTER 127.1 343.65 | UNICOM 122.8 (CTAF) 0 |
|------------------------|--------------------------------------|---------------------------------|



| CATEGORY | A | B | C | D |
|-------------------|-----------------------|-----------------------|-------------------------|-------------------------|
| LPV DA | | 5973-1 | 250 (300-1) | |
| LNAV/VNAV DA | | 6101-1 | 378 (400-1) | |
| LNAV MDA | 6160-1 | 437 (500-1) | 6160-1¼ | 437 (500-1¼) |
| C CIRCLING | 6280-1 521 (600-1) | 6320-1 561 (600-1) | 6380-1¾ 621 (700-1¾) | 6800-3 1041 (1100-3) |

SW-1, 13 JUN 2024 to 11 JUL 2024

SW-1, 13 JUN 2024 to 11 JUL 2024