

APP CRS	Rwy Idg	10000
340°	TDZE	5734
	Apt Elev	5759

RNAV (GPS) RWY 35

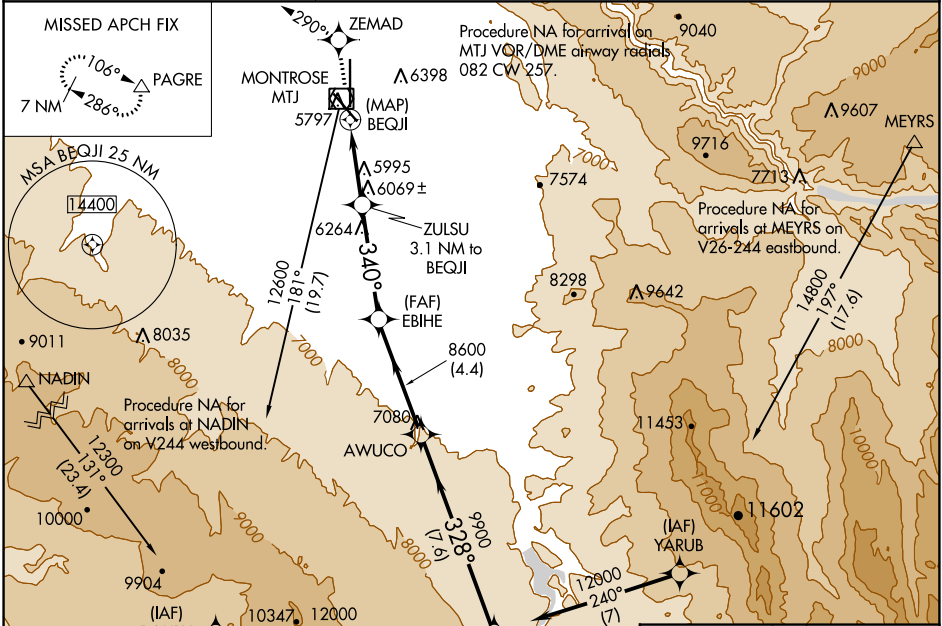
MONTROSE RGNL (MTJ)

RNP APCH-GPS.

⚠ When Circling to Rwy 13 at night, operational VGSI required, remain on or above VGSI glidepath until threshold. Circling Rwy 31 NA at night. Rwy 35 helicopter visibility reduction below 3/4 SM NA. Circling NA east of Rwy 17 and northeast of Rwy 31. When local altimeter setting not received, procedure NA.

MISSED APPROACH: Climb to 11000 direct ZEMAD on track 290° to PAGRE and hold, continue climb-in-hold to 11000.

ASOS 135.225	DENVER CENTER 127.1 343.65	UNICOM 122.8 (CTAF)
------------------------	--------------------------------------	-------------------------------



ELEV 5759 **D** TDZE 5734

REIL Rws 31 and 35

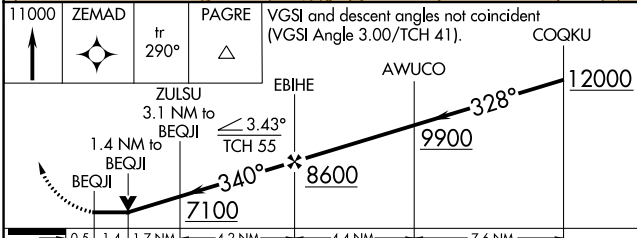
HIRL Rws 13-31 and 17-35

Procedure NA for arrival on ETL VOR/DME airway radials 019 CW 143.

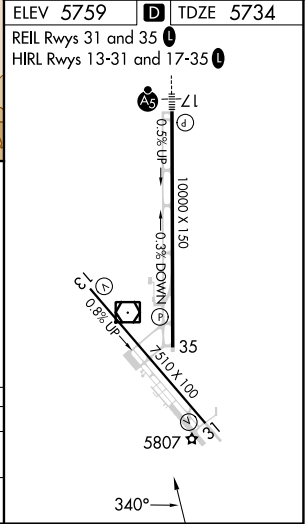
Procedure NA for arrival on NADIN on V244 westbound!

Procedure NA for arrival on MTJ VOR/DME airway radials 082 CW 257.

Procedure NA for arrivals at MEYRS on V26-244 eastbound.



CATEGORY	A	B	C	D
LNVA MDA	6380-1 646 (700-1)	646 (700-1)	6380-1 3/4 646 (700-1 3/4)	6380-2 646 (700-2)
CIRCLING	6380-1 621 (700-1)	6420-1 661 (700-1)	6640-2 3/4 881 (900-2 3/4)	6800-3 1041 (1100-3)



SW-1, 13 JUN 2024 to 11 JUL 2024

SW-1, 13 JUN 2024 to 11 JUL 2024