

ATLANTIC CITY, NEW JERSEY

# HI-VOR or TACAN RWY 31

VORTAC ACY <b>117.15</b> Chan <b>118(Y)</b>	APCH CRS <b>302°</b>	Rwy Idg <b>10,000</b> TDZE <b>64</b> Arpt Elev <b>75</b>
---	-------------------------	--

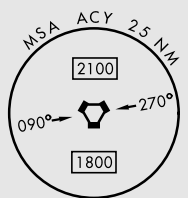
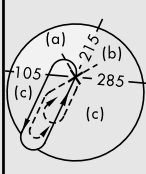
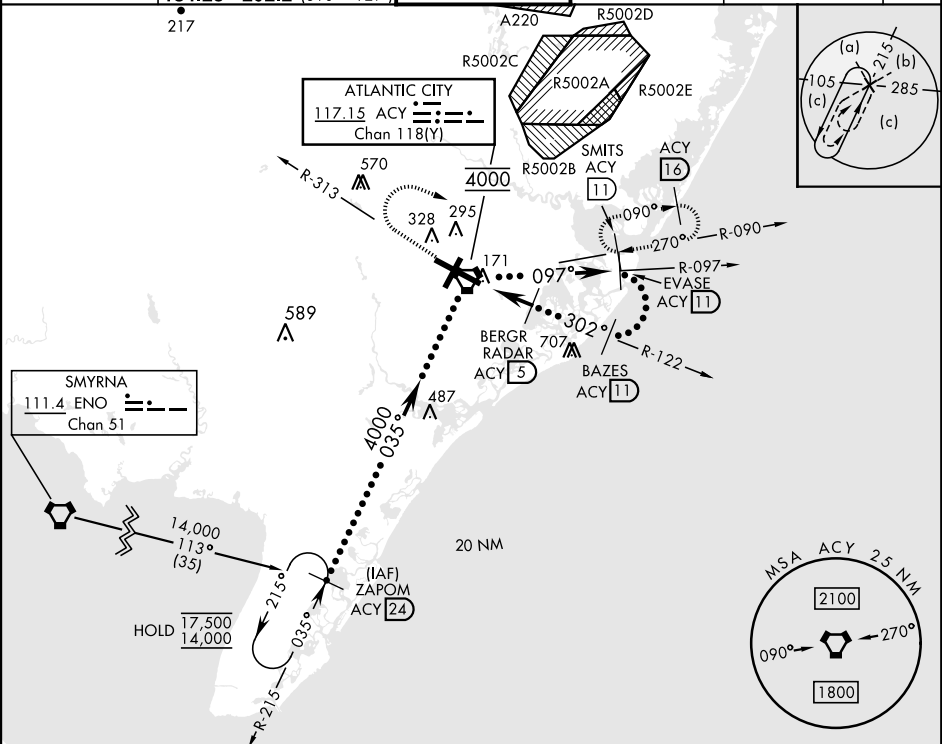
[USAF]

ATLANTIC CITY INTL (KACY)

DME or RADAR required

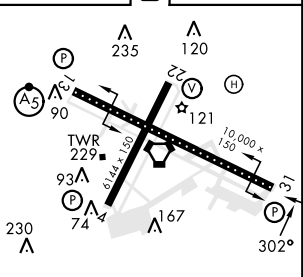
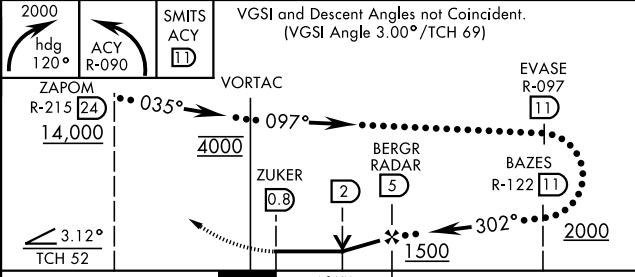
MISSED APPROACH: Climbing right turn to 2000 on heading 120° and on ACY R-090 to SMITS/ACY 11 DME and hold.

ATIS <b>125.725 316.15</b>	APP CON <b>124.6 327.125</b> (130° - 309°) <b>134.25 292.2</b> (310° - 129°)	TOWER <b>120.3 239.0</b>	GND CON <b>121.9 284.6</b>	CLNC DEL <b>127.85 353.775</b>	ASR
-------------------------------	--	-----------------------------	-------------------------------	-----------------------------------	-----



EMERG SAFE ALT 100 NM 4200

ELEV 75	D	TDZE 64
---------	---	---------



CATEGORY	C	D	E
S-31	500-1 1/4	436 (500-1 1/4)	
CIRCLING	620-1 1/2 (600-1 1/2)	640-2 (600-2)	760-2 1/2 (700-2 1/2)

REIL Rwy 31  
HIRL Rwy 4-22 and 13-31  
TDZL/CL Rwy 13

ATLANTIC CITY, NEW JERSEY 39°27'N-74°35'W ATLANTIC CITY INTL (KACY)

Amdt 4C 25JAN24

# HI-VOR or TACAN RWY 31

NE-2, 13 JUN 2024 to 11 JUL 2024

NE-2, 13 JUN 2024 to 11 JUL 2024