

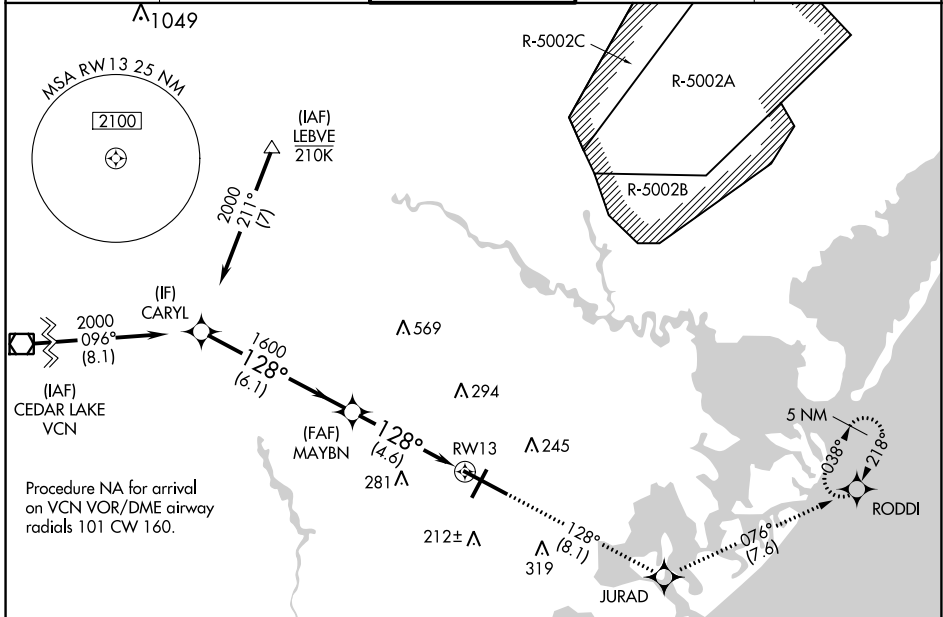
APP CRS	Rwy Ldg	<b>10000</b>
<b>128°</b>	TDZE	<b>75</b>
	Apt Elev	<b>75</b>

# RNAV (RNP) Z RWY 13

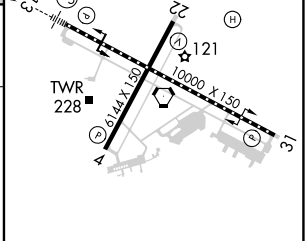
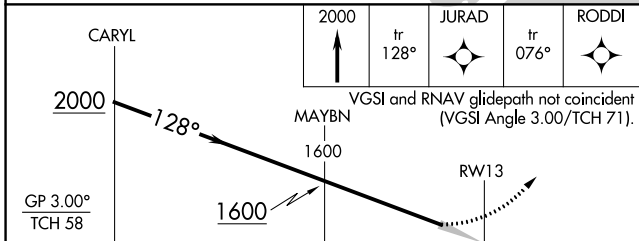
ATLANTIC CITY INTL (ACY)

<p><b>NA</b> For uncompensated Baro-VNAV systems, procedure NA below -13°C (9°F) or above 54°C (130°F). GPS required.</p> <p><b>ASR</b> For inop ALS, increase RNP 0.30 all Cats visibility to RVR 6000.</p>	<p><b>MALSR</b></p>	<p><b>MISSED APPROACH:</b> Climb to 2000 on track 128° to JURAD and on track 076° to RODDI and hold.</p>

<p>ATIS</p> <p><b>125.725 316.15</b></p>	<p>ATLANTIC CITY APP CON</p> <p><b>124.6 327.125</b></p>	<p>ATLANTIC CITY TOWER</p> <p><b>120.3 239.0</b></p>	<p>GND CON</p> <p><b>121.9 284.6</b></p>	<p>CLNC DEL</p> <p><b>127.85 353.775</b></p>
--	--	--	--	--



ELEV	75	<b>D</b>	TDZE	75
------	----	----------	------	----



CATEGORY	A	B	C	D
RNP 0.30 DA		442/40	367 (400-¾)	

**AUTHORIZATION REQUIRED**

TDZ/CL Rwy 13  
HIRL Rwy 4-22 and 13-31  
REIL Rwy 31

NE-2, 13 JUN 2024 to 11 JUL 2024

NE-2, 13 JUN 2024 to 11 JUL 2024