

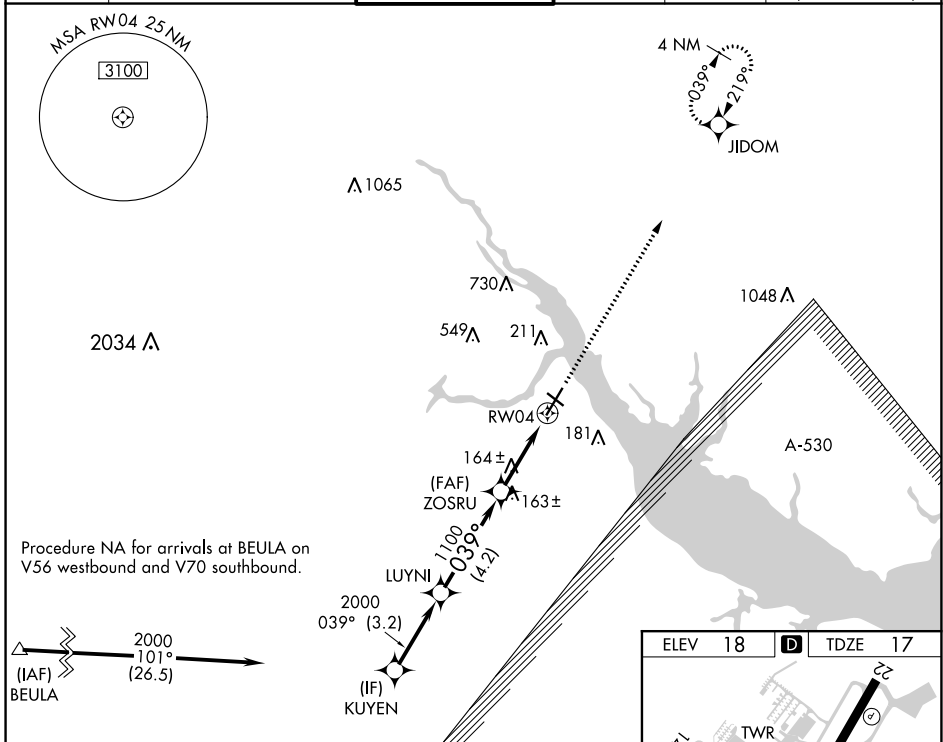
WAAS CH 69402 W04A	APP CRS 039°	Rwy Idg 5753 TDZE 17 Apt Elev 18
--	------------------------	---

RNAV (GPS) RWY 4

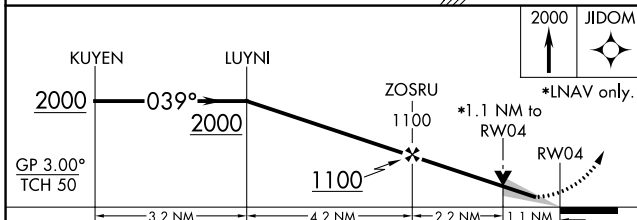
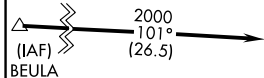
COASTAL CAROLINA RGNL (E'WN)

RNP APCH-GPS.	MISSED APPROACH: Climb to 2000 direct JIDOM and hold.
<p>▼ Circling Rwy 14, 32 NA at night. For uncompensated Baro-VNAV systems, LNAV/VNAV NA below -10°C or above 54°C.</p> <p>▲</p>	

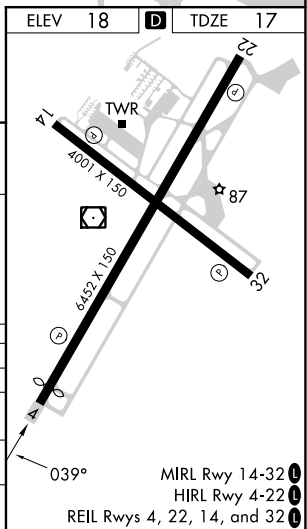
ASOS 118.525	CHERRY POINT APP CON 119.35 374.9	NEW BERN TOWER ★ 124.25 (CTAF) 0	GND CON 121.7	CLNC DEL 121.7	CLNC DEL 120.525 (when twr closed)
------------------------	---	--	-------------------------	--------------------------	---



Procedure NA for arrivals at BEULA on V56 westbound and V70 southbound.



CATEGORY	A	B	C	D
LPV DA		217-3/4	200 (200-3/4)	
LNAV/VNAV DA		441-1 1/4	424 (500-1 1/4)	
LNAV MDA	420-1	403 (500-1)	420-1 1/8	403 (500-1 1/8)
C CIRCLING	480-1 462 (500-1)	520-1 502 (600-1)	600-1 1/2 582 (600-1 1/2)	860-2 1/4 842 (900-2 1/4)



MIRL Rwy 14-32 **0**
HIRL Rwy 4-22 **0**
REIL Rws 4, 22, 14, and 32 **0**

SE-2, 13 JUN 2024 to 11 JUL 2024

SE-2, 13 JUN 2024 to 11 JUL 2024