

APP CRS	Rwy Idg	<b>3999</b>
<b>305°</b>	TDZE	<b>325</b>
	Apt Elev	<b>328</b>

# RNAV (GPS) RWY 30

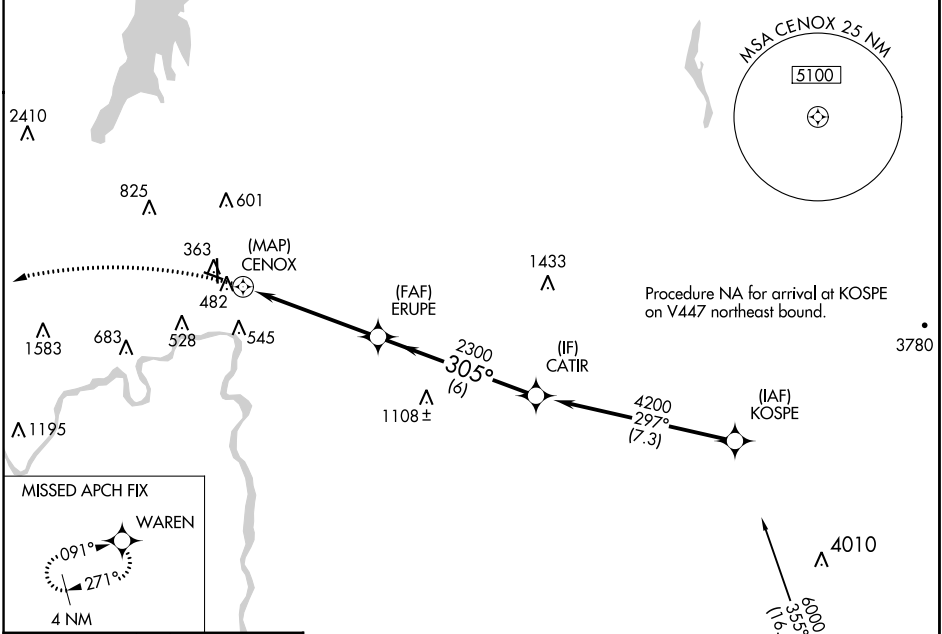
FLOYD BENNETT MEML (GFL)

RNP APCH.

- Circling Rwy 12 NA at night.
- Rwy 30 helicopter visibility reduction below 3/4 SM NA.
- 19°C

MISSED APPROACH: Climbing left turn to 4000 direct WAREN and hold.

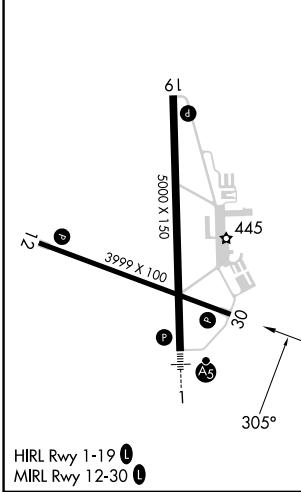
ASOS <b>119.925</b>	ALBANY APP CON <b>132.825 307.2</b>	UNICOM <b>123.0 (CTAF)</b>
------------------------	--	-------------------------------



NE-2, 13 JUN 2024 to 11 JUL 2024

NE-2, 13 JUN 2024 to 11 JUL 2024

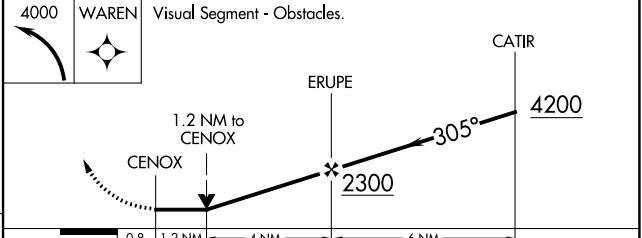
ELEV 328	<b>D</b>	TDZE 325
----------	----------	----------



HIRL Rwy 1-19

MIRL Rwy 12-30

Procedure NA for arrival at DORIS on V490 eastbound.



CATEGORY	A	B	C	D
LNAV MDA	1020-1	695 (700-1)	1020-2 695 (700-2)	1020-2 1/4 695 (700-2 1/4)
<b>C</b> CIRCLING	1020-1	692 (700-1)	1020-2 692 (700-2)	1960-3 1632 (1700-3)

GLENS FALLS, NEW YORK

Orig-C 15AUG19

43°20'N-73°37'W

# FLOYD BENNETT MEML (GFL)

## RNAV (GPS) RWY 30