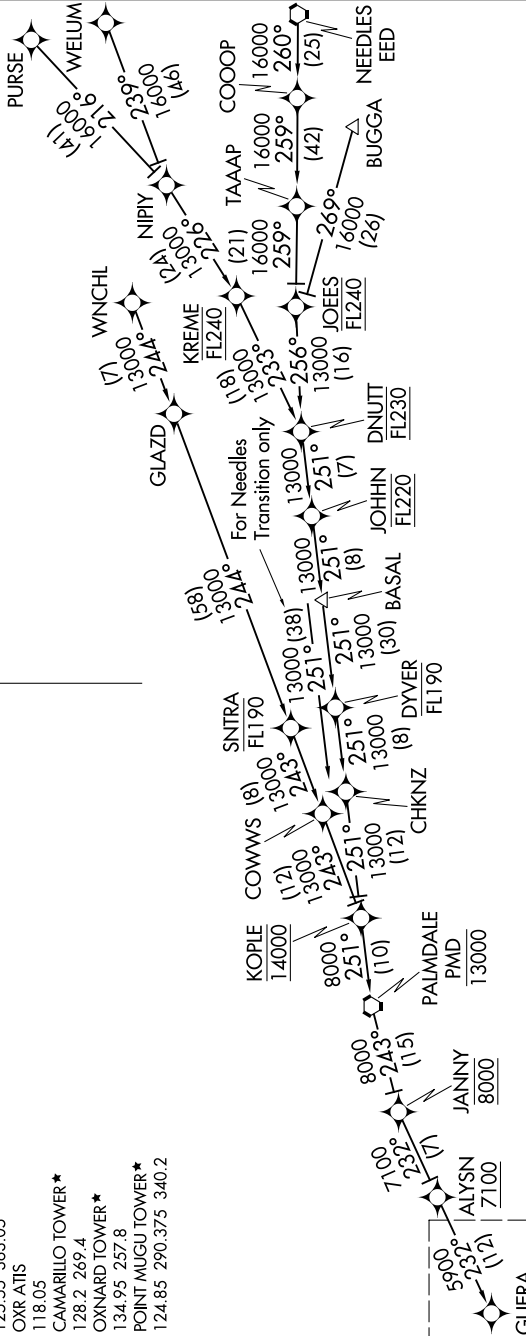


# GUERA TWO ARRIVAL (RNAV) Transition Routes

OXNARD, CALIFORNIA

SW-3, 13 JUN 2024 to 11 JUL 2024

- SOCAL APP CON  
120.4 360.6
- CMA ATIS  
126.025
- KNITD ATIS \*
- 125.55 363.05
- OKR ATIS  
118.05
- CAMARILLO TOWER \*
- 128.2 269.4
- OXNARD TOWER \*
- 134.95 257.8
- POINT MUGU TOWER \*
- 124.85 290.375 340.2



- NOTE: RADAR required.
- NOTE: RNAV 1.
- NOTE: DME/DME/IRU or GPS required.
- NOTE: Turbojet and turboprop aircraft only.
- NOTE: KREME TRANSITION restricted to KLAS departures only.
- NOTE: WNCHL TRANSITION ATC assigned only.

See following page for Arrival Routes.

- BUGGA TRANSITION (BUGGA.GUERA2)
- KREME TRANSITION (KREME.GUERA2)
- NEEDLES TRANSITION (EED.GUERA2)
- PURSE TRANSITION (PURSE.GUERA2)
- WELUM TRANSITION (WELUM.GUERA2)
- WNCHL TRANSITION (WNCHL.GUERA2)

(CONTINUED ON FOLLOWING PAGE)

NOTE: Chart not to scale.

SW-3, 13 JUN 2024 to 11 JUL 2024

# GUERA TWO ARRIVAL (RNAV) Transition Routes

OXNARD, CALIFORNIA