

LOC I- OXR	APP CRS 256°	Rwy ldg TDZE Apt Elev	5500 44 45
-------------------	------------------------	-----------------------------	---------------------------------------

ILS or LOC RWY 25

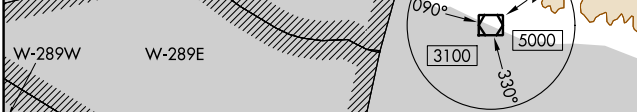
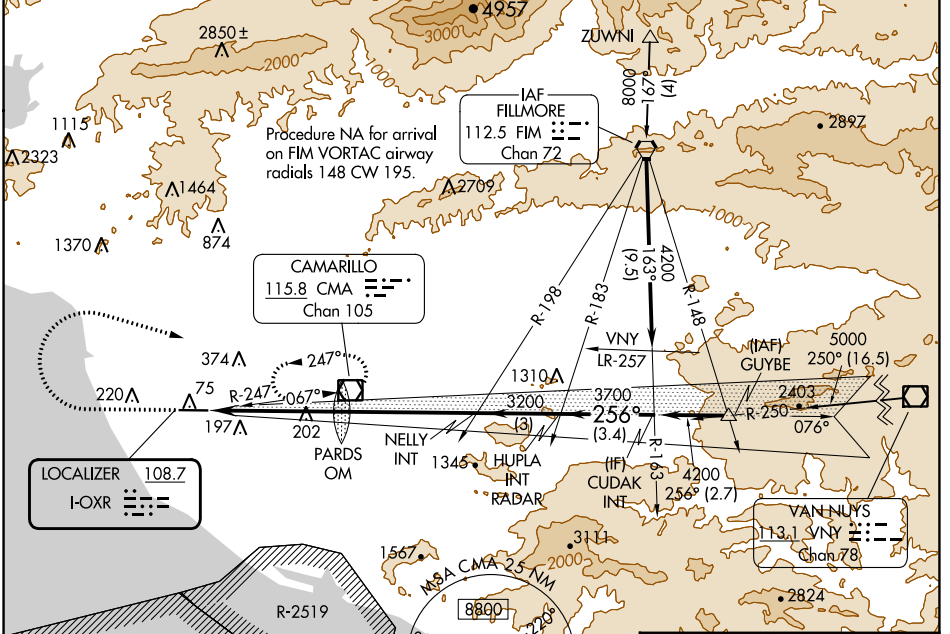
OXNARD (OXR)

⚠ Rwy 25 helicopter visibility reduction below ¼ SM NA. Autopilot coupled approach NA below 1086. Inop table does not apply.

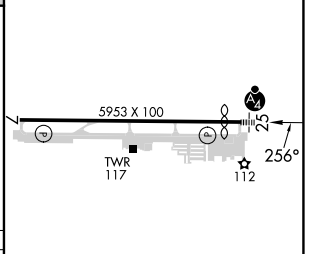
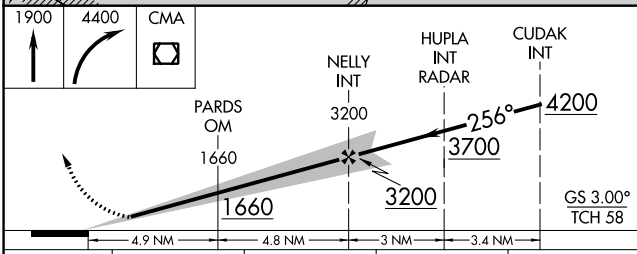
MALSF

MISSED APPROACH: Climb to 1900 then climbing right turn to 4400 direct CMA VOR/DME and hold, continue climb-in-hold to 4400.

ATIS 118.05	POINT MUGU APP CON * 124.7 335.5	OXNARD TOWER * 134.95 (CTAF) 0 257.8	GND CON 121.9
-----------------------	--	--	-------------------------



ELEV 45	D TDZE 44
---------	------------------



CATEGORY	A	B	C	D
S-ILS 25		424-1 380 (400-1)		
S-LOC 25		460-1 416 (500-1)		
CIRCLING	500-1 455 (600-1)	520-1 475 (500-1)	700-1¾ 655 (700-1¾)	720-2¼ 675 (700-2¼)

REIL Rwy 7 L	
MIRL Rwy 7-25 L	
FAF to MAP 9.7 NM	
Knots	60 90 120 150 180
Min:Sec	9:42 6:28 4:51 3:53 3:14

SW-3, 13 JUN 2024 to 11 JUL 2024

SW-3, 13 JUN 2024 to 11 JUL 2024