

WAAS CH <b>72623</b> <b>W07A</b>	APP CRS <b>075°</b>	Rwy Idg TDZE Apt Elev	<b>5954</b> <b>37</b> <b>45</b>
--	------------------------	-----------------------------	---------------------------------------

# RNAV (GPS) RWY 7

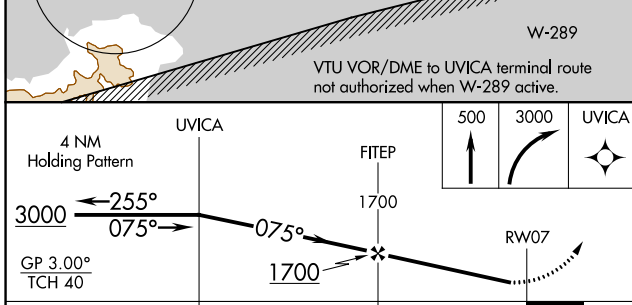
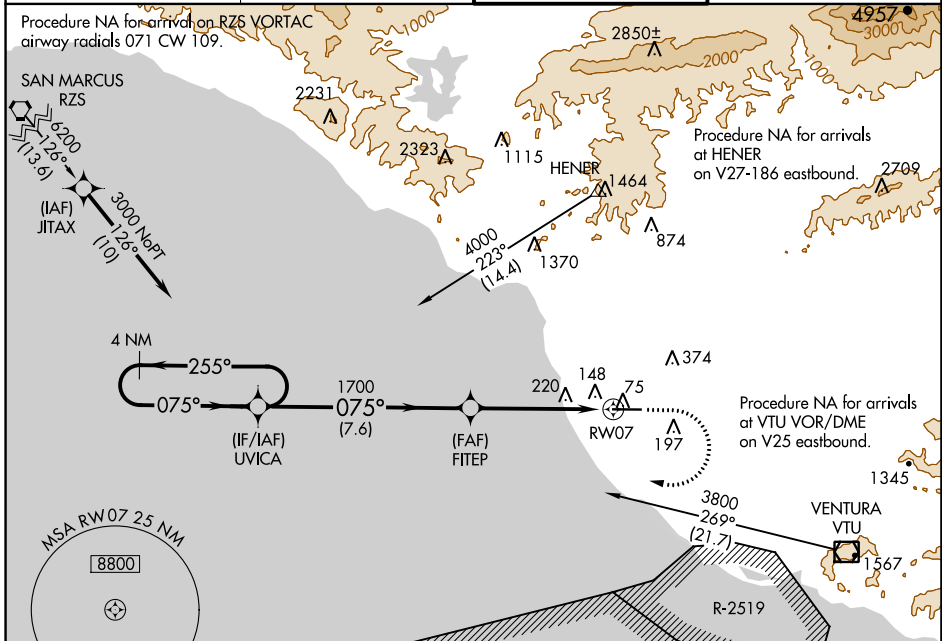
OXNARD (OXR)

RNP APCH-GPS.

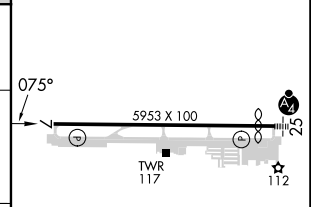
Baro-VNAV NA when using Camarillo altimeter setting. For uncompensated Baro-VNAV systems, LNAV/VNAV NA below -15°C or above 43°C. When local altimeter setting not received, use Camarillo altimeter setting and increase LPV DA to 305 feet, increase LNAV/VNAV DA to 337 feet; increase all MDAs 20 feet and Circling Cat C visibility ¼ SM.

MISSED APPROACH: Climb to 500, then climbing right turn to 3000 direct UVICA and hold.

ATIS <b>118.05</b>	POINT MUGU APP CON* <b>124.7 335.5</b>	OXNARD TOWER* <b>134.95 (CTAF) 257.8</b>	GND CON <b>121.9</b>
-----------------------	---	---	-------------------------



ELEV 45	TDZE 37
---------	---------



CATEGORY	A	B	C	D
LPV DA		287-1	250 (300-1)	
LNAV/VNAV DA		319-1	282 (300-1)	
LNAV MDA	480-1	443 (500-1)	480-1 <sup>3</sup> / <sub>8</sub>	443 (500-1 <sup>3</sup> / <sub>8</sub> )
CIRCLING	500-1 455 (500-1)	520-1 475 (500-1)	700-1 <sup>3</sup> / <sub>4</sub> 655 (700-1 <sup>3</sup> / <sub>4</sub> )	760-2 <sup>1</sup> / <sub>4</sub> 715 (800-2 <sup>1</sup> / <sub>4</sub> )

REIL Rwy 7

MIRL Rwy 7-25

SW-3, 13 JUN 2024 to 11 JUL 2024

SW-3, 13 JUN 2024 to 11 JUL 2024