

VOR/DME CMA 115.8 Chan 105	APP CRS 247°	Rwy Idg TDZE Apt Elev	5500 44 45
---	------------------------	-----------------------------	---------------------------------------

VOR RWY 25

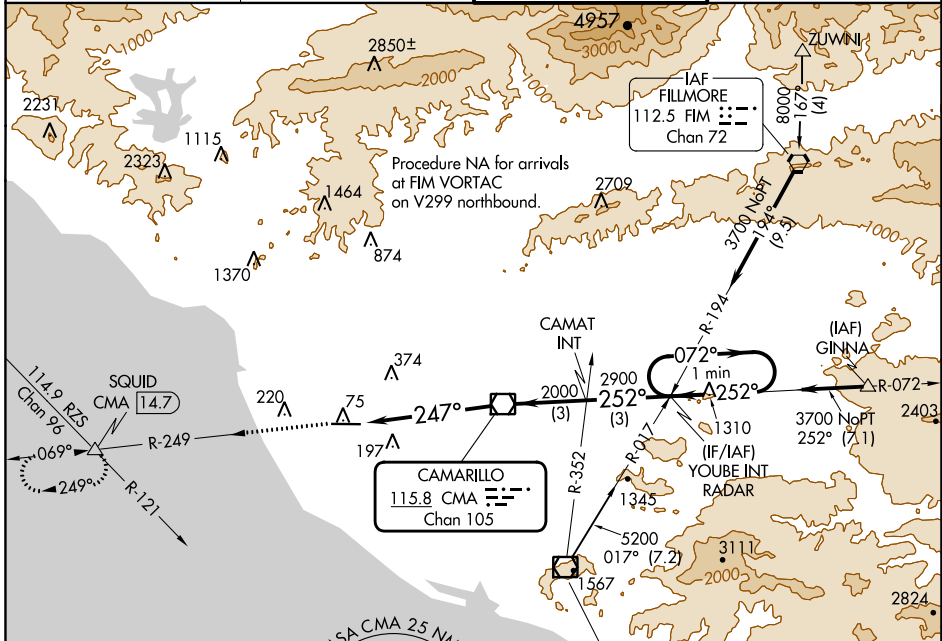
OXNARD (OXR)

⚠ Inop table does not apply. When local altimeter setting not received, use Camarillo altimeter setting and increase all MDAs 20 feet, increase Circling Cat C visibility 1/4 SM. Rwy 25 helicopter visibility reduction below 3/4 SM NA.

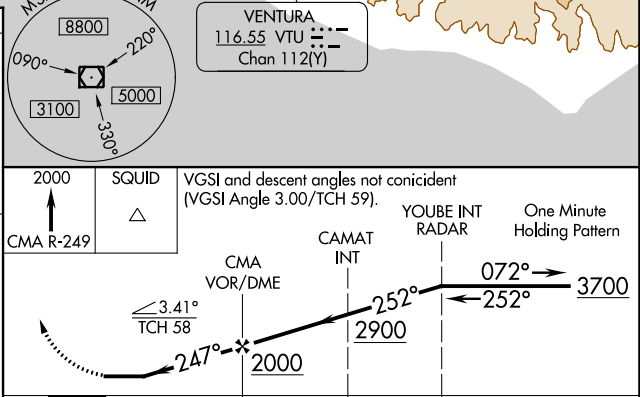
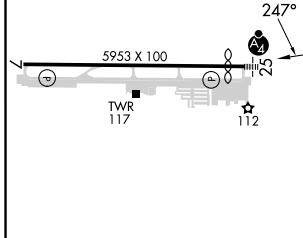
MALSF

MISSED APPROACH: Climb to 2000 on CMA R-249 to SQUID INT/14.7 DME and hold.

ATIS 118.05	POINT MUGU APP CON* 124.7 335.5	OXNARD TOWER* 134.95 (CTAF) 257.8	GND CON 121.9
-----------------------	---	---	-------------------------



ELEV 45	D	TDZE 44
---------	----------	---------



REIL Rwy 7

MIRL Rwy 7-25

FAF to MAP 5.3 NM

Knots	60	90	120	150	180
Min:Sec	5:18	3:32	2:39	2:07	1:46

CATEGORY	A	B	C	D
S-25	540-1	496 (500-1)	540-1 3/8	496 (500-1 1/8)
CIRCLING	540-1	495 (500-1)	700-1 3/4 655 (700-1 1/4)	760-2 1/4 715 (800-2 1/4)

SW-3, 13 JUN 2024 to 11 JUL 2024

SW-3, 13 JUN 2024 to 11 JUL 2024