

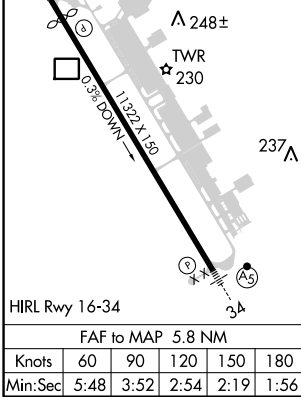
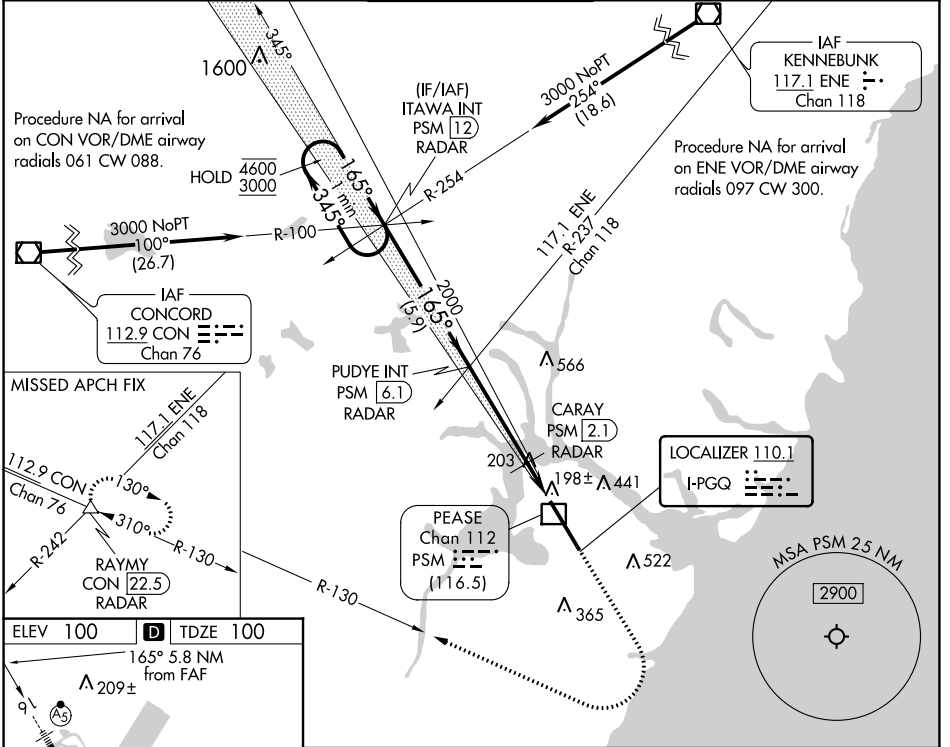
LOC I-PGQ 110.1	APP CRS 165°	Rwy ldg 10518 TDZE 100 Apt Elev 100
---------------------------	------------------------	--

ILS or LOC RWY 16

PORTSMOUTH INTL AT PEASE (PSM)

DME or RADAR required.		MALSR ILS LOC	MISSED APPROACH: Climb to 1500 then climbing right turn to 3000 on CON VOR/DME R-130 to RAYMY INT/CON VOR/DME 22.5 DME/RADAR and hold.
Circling NA east of Rwy 16-34. DME from PSM DME. Simultaneous reception of I-PGQ and PSM DME required. For inop ALS, increase S-ILS 16 Cat D visibility to RVR 4000; increase S-LOC 16 Cat C/D/E visibility to RVR 5500. * RVR 1800 authorized with use of FD or AP or HUD to DA (NA when using Rochester altimeter setting).			

ATIS 132.05 273.5	BOSTON APP CON 125.05 269.4	PORTSMOUTH TOWER 128.4 269.0	GND CON 120.95 275.8	CLNC DEL 335.8
-----------------------------	---------------------------------------	--	--------------------------------	--------------------------



VGSI and ILS glidepath not coincident (VGSI Angle 3.00/TCH 72).

One Minute Holding Pattern	ITAWA INT PSM [12] RADAR	PUDYE INT PSM [6.1] RADAR	CARAY PSM [2.1] RADAR	RAYMY CON R-130	
4600 / 3000	345° / 165°	165°	2000 / 720	PSM [1.3] / [0.3]	
GS 3.00° TCH 55	5.9 NM	4 NM	0.8	1 NM	
CATEGORY	A	B	C	D	E
S-ILS 16*	300/24 200 (200-½)				
S-LOC 16	480/24 380 (400-½)		480/35 380 (400-¾)		
CIRCLING	540-1	560-1	680-1½	780-2¼	800-2½
	440 (500-1)	460 (500-1)	580 (600-1½)	680 (700-2¼)	700 (700-2½)

NE-1, 13 JUN 2024 to 11 JUL 2024

NE-1, 13 JUN 2024 to 11 JUL 2024