

WAAS CH 70644 W23A	APP CRS 234°	Rwy Idg 4001 TDZE 3652 Apt Elev 3658
--	------------------------	---

RNAV (GPS) RWY 23

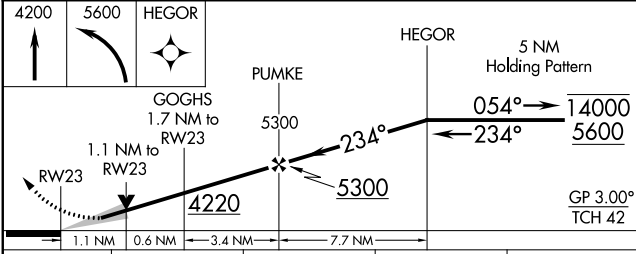
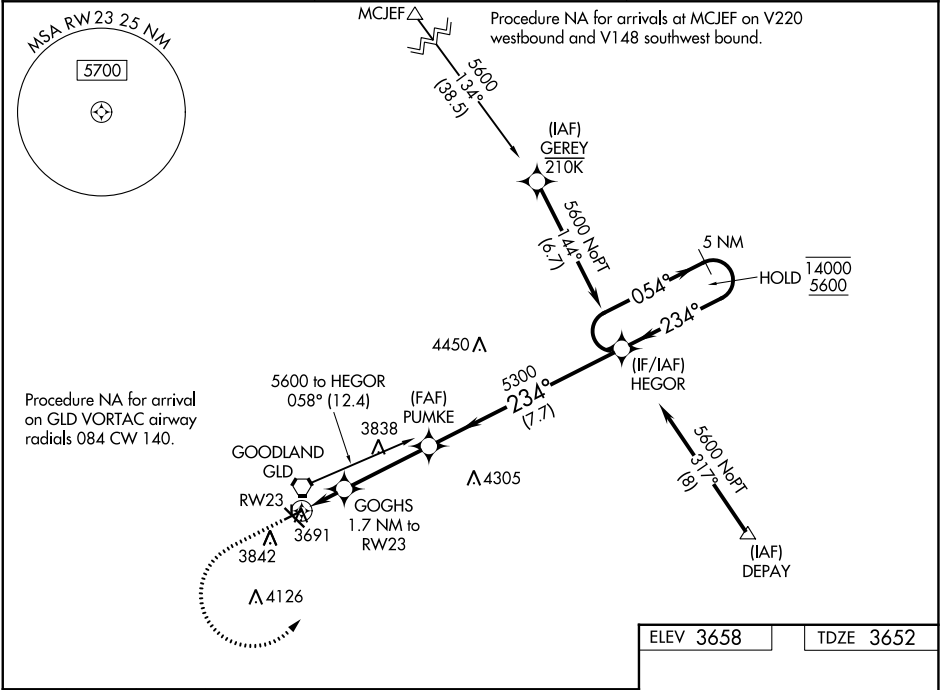
RENNER FLD/GOODLAND MUNI (GLD)

RNP APCH - GPS.

⚠ Circling NA to Rwy 17 and 35. Circling NA south of Rwy 5 and 30.
⚠ For uncompensated Baro-VNAV systems, LNAV/VNAV NA below -21°C or above 54°C. Circling Rwy 5 NA at night.

MISSED APPROACH: Climb to 4200 then climbing left turn to 5600 direct HEGOR and hold.

ASOS 121.025	DENVER CENTER 132.7 226.675	UNICOM 122.8 (CTAF) 0
------------------------	---------------------------------------	---------------------------------



ELEV 3658	TDZE 3652
-----------	-----------

REIL Rwy 12 0
MIRL Rwy 5-23 and 12-30 0

CATEGORY	A	B	C	D
LPV DA	3902-1	250 (300-1)		NA
LNAV/VNAV DA	3939-1	287 (300-1)		NA
LNAV MDA	4040-1	388 (400-1)	4040-1 1/8 388 (400-1 1/8)	NA
CIRCLING	4080-1 422 (500-1)	4120-1 462 (500-1)	4120-1 1/2 462 (500-1 1/2)	NA

NC-2, 13 JUN 2024 to 11 JUL 2024

NC-2, 13 JUN 2024 to 11 JUL 2024