

WAAS CH <b>65805</b> <b>W13A</b>	APP CRS <b>131°</b>	Rwy Idg TDZE Apt Elev	<b>6502</b> <b>1500</b> <b>1500</b>
--	------------------------	-----------------------------	---

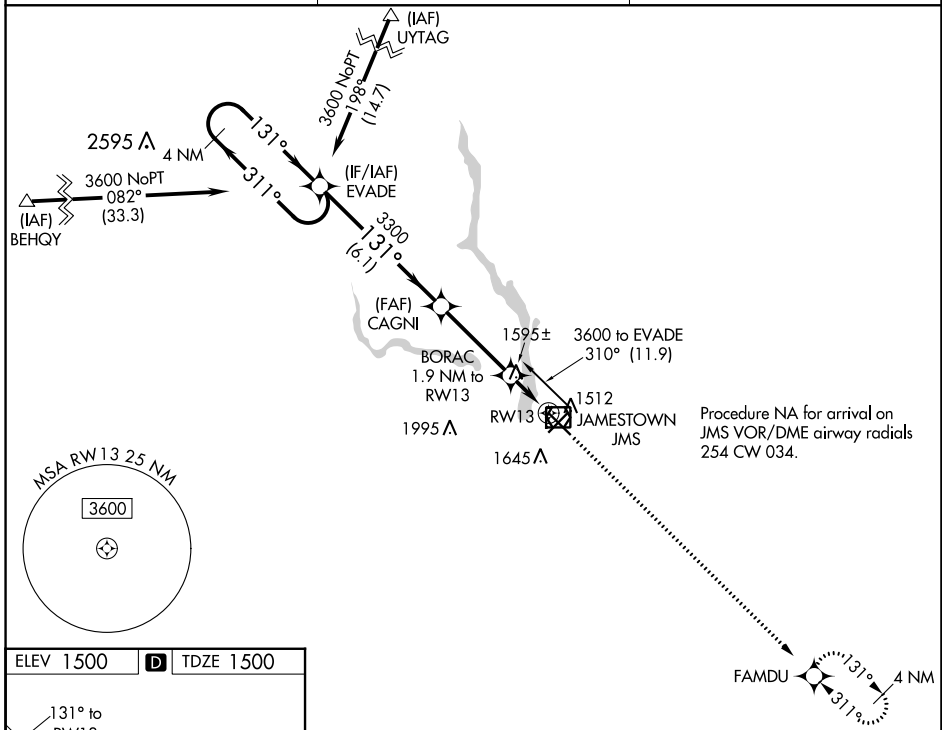
# RNAV (GPS) RWY 13

JAMESTOWN RGNL (JMS)

**⚠** For uncompensated Baro-VNAV systems, LNAV/VNAV NA below -21°C (-5°F) or above 54°C (130°F). Rwy 13 helicopter visibility reduction below ¾ SM NA. DME/DME RNP-0.3 NA.

MISSED APPROACH: Climb to 3500 direct FAMDU and hold.

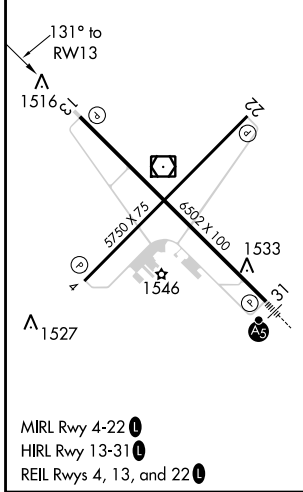
ASOS <b>118.425</b>	MINNEAPOLIS CENTER <b>124.2 270.3</b>	UNICOM <b>123.0 (CTAF) 0</b>
------------------------	--	---------------------------------



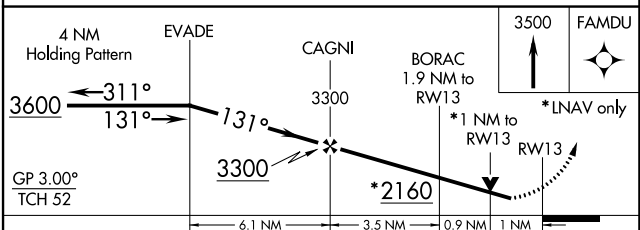
NC-1, 13 JUN 2024 to 11 JUL 2024

NC-1, 13 JUN 2024 to 11 JUL 2024

ELEV 1500	<b>D</b>	TDZE 1500
-----------	----------	-----------



MIRL Rwy 4-22 **0**  
HIRL Rwy 13-31 **0**  
REIL Rws 4, 13, and 22 **0**



CATEGORY	A	B	C	D
LPV DA	1787-1		287 (300-1)	
LNAV/VNAV DA	1820-1		320 (400-1)	
LNAV MDA	1860-1		360 (400-1)	
<b>C</b> CIRCLING	1960-1		460 (500-1)	
			2000-1½	
			500 (500-1½)	
			1860-1¼	
			360 (400-1¼)	
			2300-2½	
			800 (800-2½)	