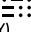
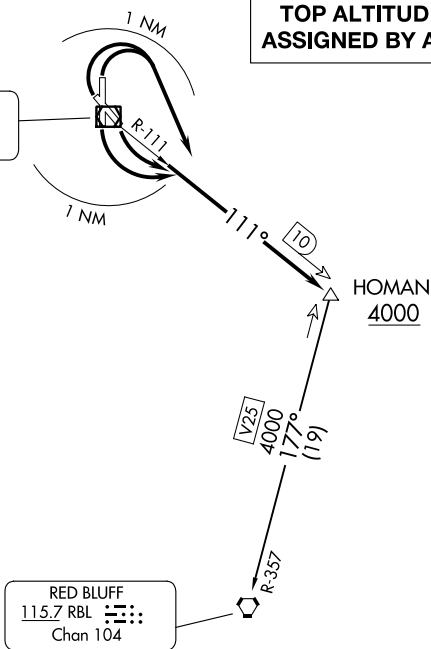


REDDING  
114.35 RDD   
Chan 90(Y)



**TOP ALTITUDE:  
ASSIGNED BY ATC**

OAKLAND CENTER  
132.2 350.3  
ATIS  
124.1  
GND CON  
121.7  
REDDING TOWER ★  
119.8 (CTAF) 269.25

SW-2, 13 JUN 2024 to 11 JUL 2024

SW-2, 13 JUN 2024 to 11 JUL 2024

**TAKEOFF MINIMUMS:**

Rwys 12, 16, 30, 34: Standard with minimum climb of 400' per NM to 4000.

NOTE: Chart not to scale.



### DEPARTURE ROUTE DESCRIPTION

TAKEOFF RUNWAYS 12, 16: Climbing left turn within 1 NM, thence. . . .

TAKEOFF RUNWAYS 30, 34: Climbing right turn within 1 NM, thence. . . .

. . . .Intercept the RDD R-111, to HOMAN INT/RDD 10 DME, cross HOMAN INT/RDD 10 DME at or above 4000'; then on (transition) or (assigned route). Expect filed altitude 10 minutes after departure.

RED BLUFF TRANSITION (HOMAN3.RBL): From over HOMAN INT/RDD 10 DME on RBL R-357 to RBL VORTAC.