

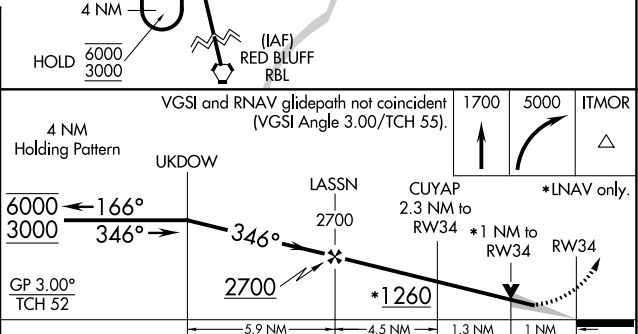
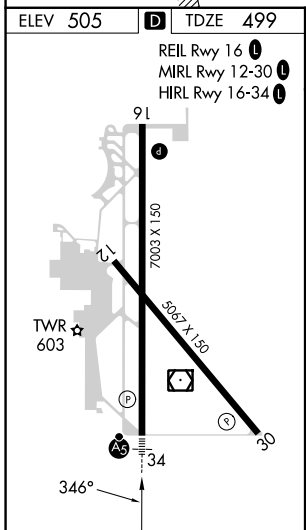
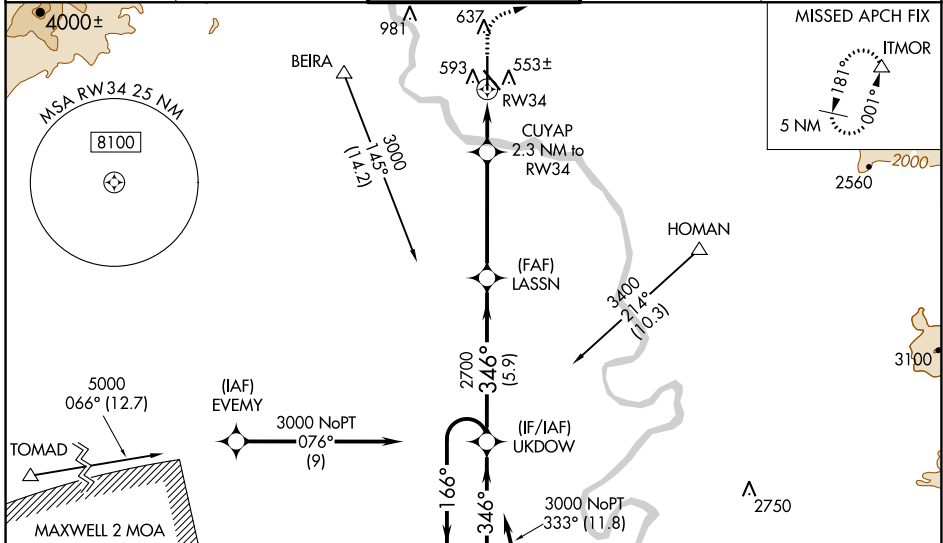
WAAS CH 56402 W34A	APP CRS 346°	Rwy Idg TDZE Apt Elev	7003 499 505
--	------------------------	-----------------------------	---

RNAV (GPS) RWY 34

REDDING RGNL (RDD)

RNP APCH.	MALSRS	MISSED APPROACH: Climb to 1700 then climbing right turn to 5000 direct ITMOR, continue climb-in-hold to 5000.
<p>⚠ For uncompensated Baro-VNAV systems, LNAV/VNAV NA below -4°C or above 54°C. For inop ALS, increase LNAV/VNAV all Cats visibility to 3/4 SM and LNAV Cat C, D visibility to 1 SM.</p>		

ATIS 124.1	OAKLAND CENTER 132.2 350.3	REDDING TOWER * 119.8(CTAF) 0 269.25	GND CON 121.7	UNICOM 122.95
----------------------	--------------------------------------	---	-------------------------	-------------------------



CATEGORY	A	B	C	D
LPV DA		699-1/2	200 (200-1/2)	
LNAV/VNAV DA		754-1/2	255 (300-1/2)	
LNAV MDA	860-1/2	361 (400-1/2)	860-5/8	361 (400-5/8)
C CIRCLING	940-1 435 (500-1)	1000-1 495 (500-1)	1120-1 3/4 615 (700-1 3/4)	1340-2 3/4 835 (900-2 3/4)

SW-2, 13 JUN 2024 to 11 JUL 2024

SW-2, 13 JUN 2024 to 11 JUL 2024