

# SHASTA FOUR DEPARTURE

AL-688 (FAA)

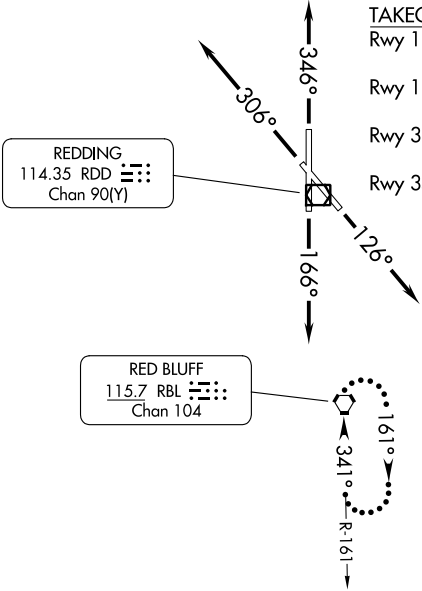
REDDING RGNL (R.DD)  
REDDING, CALIFORNIA

OAKLAND CENTER  
132.2 350.3  
ATIS  
124.1  
GND CON  
121.7  
REDDING TOWER\*  
119.8 (CTAF) 269.25

**TOP ALTITUDE:  
ASSIGNED BY ATC**

FORT JONES  
116.25 FJS :---  
Chan 109(Y)

KLAMATH FALLS  
115.9 LMT :---  
Chan 106



### TAKEOFF MINIMUMS

- Rwy 12: Standard with a minimum climb of 375' per NM to 13900.
- Rwy 16: Standard with a minimum climb of 370' per NM to 13900.
- Rwy 30: Standard with a minimum climb of 460' per NM to 8400.
- Rwy 34: Standard with a minimum climb of 452' per NM to 8200.

SW-2, 13 JUN 2024 to 11 JUL 2024

SW-2, 13 JUN 2024 to 11 JUL 2024

### DEPARTURE ROUTE DESCRIPTION

**TAKEOFF RUNWAY 12:** Climb heading 126° (or ATC assigned 344° CW 234°), thence . . .

**TAKEOFF RUNWAY 16:** Climb heading 166° (or ATC assigned 354° CW 234°), thence . . .

**TAKEOFF RUNWAY 30:** Climb heading 306° (or ATC assigned 134° CW 004°), thence . . .

**TAKEOFF RUNWAY 34:** Climb heading 346° (or ATC assigned 174° CW 004°), thence . . .

. . . expect vectors to join assigned route. Maintain ATC assigned altitude; expect filed altitude/flight level ten minutes after departing.

**LOST COMMUNICATIONS:** If no contact with Oakland Center after reaching 4000 proceed to RBL VORTAC and hold.

WILLIAMS  
114.4 ILA :---  
Chan 91

NOTE: RADAR required.

NOTE: Chart not to scale.

# SHASTA FOUR DEPARTURE