

VOR/DME RDD <b>114.35</b> Chan 90(Y)	APP CRS <b>355°</b>	Rwy Idg TDZE <b>499</b> Apt Elev <b>505</b>	<b>7003</b>
--	------------------------	---	-------------

# VOR RWY 34

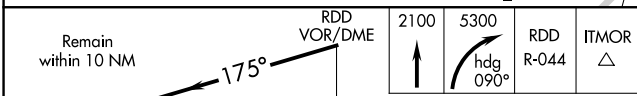
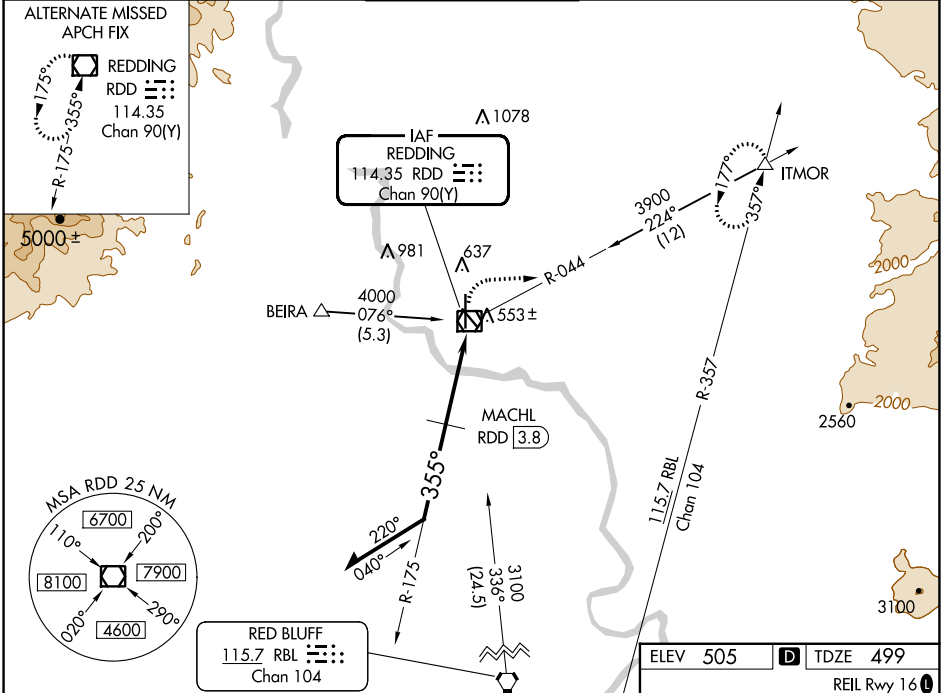
REDDING RGNL (RDD)

**⚠** Inop table does not apply to S-34 Cats C/D. MACHL fix minimums: for inop ALS, increase S-34 Cat C/D visibility to 1 3/4 SM.

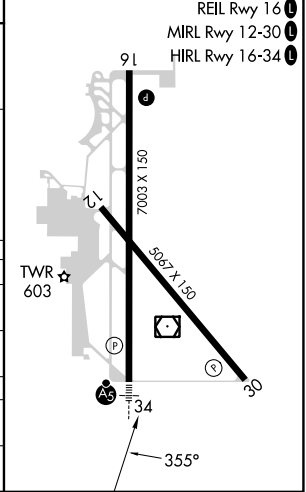
**MALS** 

**MISSED APPROACH:** Climb to 2100 then climbing right turn to 5300 on heading 090° and on RDD VOR/DME R-044 to ITMOR INT and hold, continue climb-in-hold to 5300.

ATIS <b>124.1</b>	OAKLAND CENTER <b>132.2 350.3</b>	<b>REDDING TOWER ★</b> <b>119.8(CTAF) 269.25</b>	GND CON <b>121.7</b>	UNICOM <b>122.95</b>
----------------------	--------------------------------------	---	-------------------------	-------------------------



ELEV 505	<b>D</b> TDZE 499
----------	-------------------



CATEGORY	A	B	C	D
S-34	1680-3/4 1181 (1200-3/4)	1680-1 1181 (1200-1)	1680-3	1181 (1200-3)
<b>C</b> CIRCLING	1680-1 1/4 1175 (1200-1 1/4)	1680-1 1/2 1175 (1200-1 1/2)	1680-3	1175 (1200-3)

MACHL FIX MINIMUMS				
S-34	1100-1/2	601 (600-1/2)	1100-1 3/8	601 (600-1 3/8)
<b>C</b> CIRCLING	1100-1	595 (600-1)	1120-1 3/4 615 (700-1 3/4)	1340-2 3/4 835 (900-2 3/4)

SW-2, 13 JUN 2024 to 11 JUL 2024

SW-2, 13 JUN 2024 to 11 JUL 2024