

VOR/DME FAY 114.85 Chan 95(Y)	APP CRS 198°	Rwy Idg 6413 TDZE 180 Apt Elev 189
--	------------------------	---

VOR RWY 22

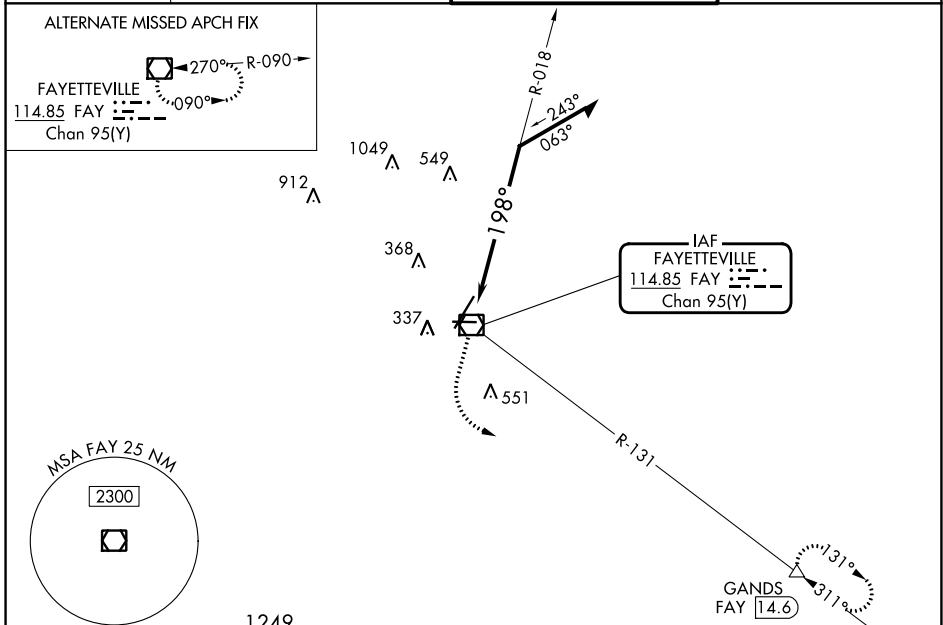
FAYETTEVILLE RGNL/GRANNIS FLD (FAY)

DME required.

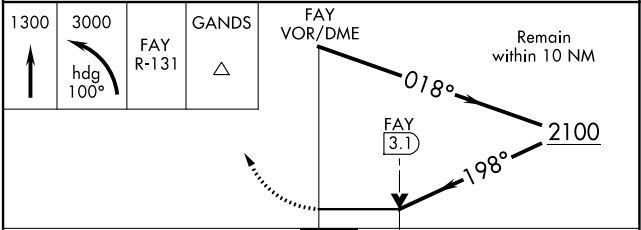
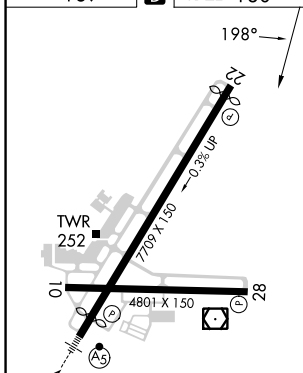
▲

MISSED APPROACH: Climb to 1300 then climbing left turn to 3000 on heading 100° and on FAY VOR/DME R-131 to GANDS/FAY 14.6 DME and hold.

ATIS 121.25	FAYETTEVILLE APP CON 133.0 290.25	FAYETTEVILLE TOWER 118.3 269.2	GND CON 121.7 348.6
-----------------------	---	--	-------------------------------



ELEV 189	D	TDZE 180
-----------------	----------	-----------------



CATEGORY	A	B	C	D
S-22	900-1 720 (800-1)		900-2 720 (800-2)	
C CIRCLING	900-1 711 (800-1)		900-2 711 (800-2)	900-2 711 (800-2) 900-2 711 (800-2)

HIRL Rwy 4-22
MIRL Rwy 10-28
REIL Rwy 10, 28 and 22

SE-2, 13 JUN 2024 to 11 JUL 2024

SE-2, 13 JUN 2024 to 11 JUL 2024