

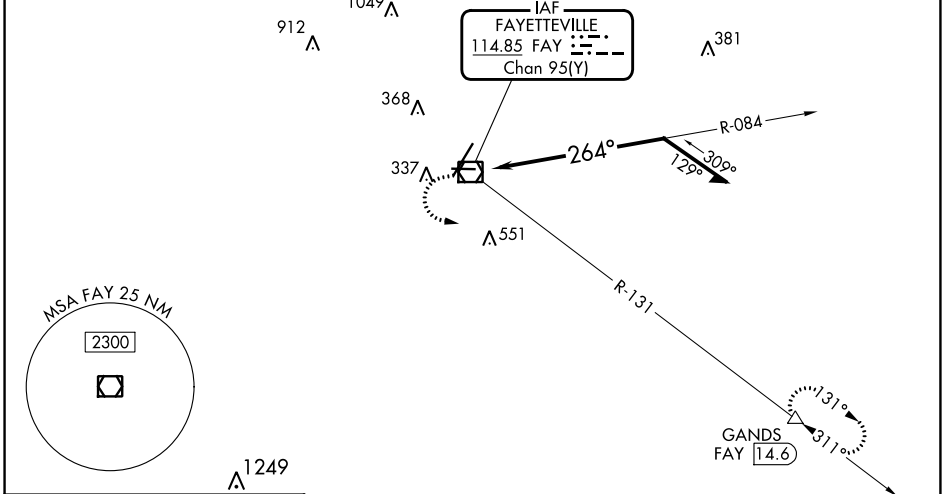
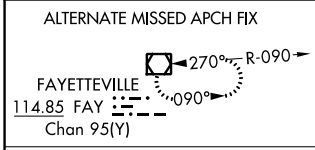
VOR/DME <b>FAY</b> <b>114.85</b> Chan <b>95(Y)</b>	APP CRS <b>264°</b>	Rwy Idg <b>4801</b> TDZE <b>188</b> Apt Elev <b>189</b>
--	------------------------	---

# VOR RWY 28

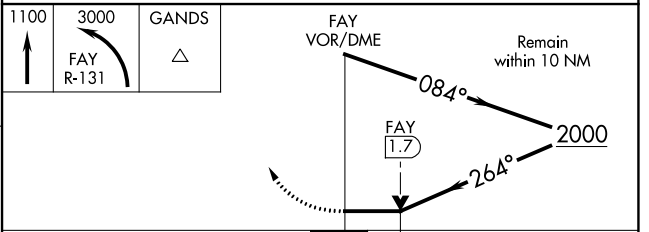
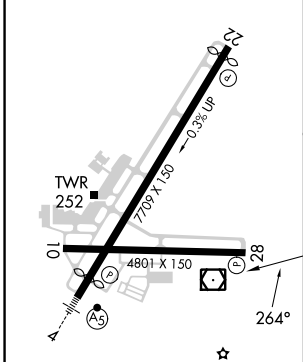
FAYETTEVILLE RGNL/GRANNIS FLD (FAY)

DME required. MISSED APPROACH: Climb to 1100 then climbing left turn to 3000 on FAY VOR/DME R-131 to GANDS/FAY 14.6 DME and hold.

ATIS <b>121.25</b>	FAYETTEVILLE APP CON <b>133.0 290.25</b>	FAYETTEVILLE TOWER <b>118.3 269.2</b>	GND CON <b>121.7 348.6</b>
-----------------------	---	--	-------------------------------



ELEV 189	<b>D</b>	TDZE 188
----------	----------	----------



CATEGORY	A	B	C	D
S-28	700-1	512 (600-1)	700-1 $\frac{3}{8}$	512 (600-1 $\frac{3}{8}$ )
<b>C</b> CIRCLING	700-1	511 (600-1)	860-2 671 (700-2)	860-2 $\frac{1}{4}$ 671 (700-2 $\frac{1}{4}$ )

SE-2, 13 JUN 2024 to 11 JUL 2024

SE-2, 13 JUN 2024 to 11 JUL 2024