

WAAS CH <b>77711</b> <b>W13A</b>	APP CRS <b>130°</b>	Rwy Idg <b>6144</b> TDZE <b>10</b> Apt Elev <b>10</b>
--	------------------------	---

# RNAV (GPS) RWY 13

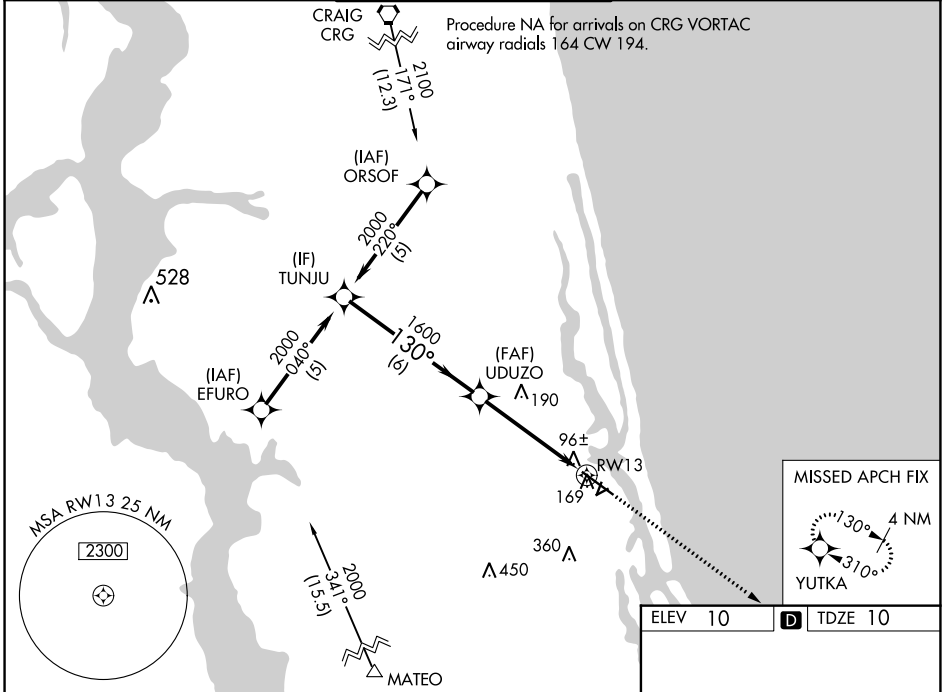
NORTHEAST FLORIDA RGNL (SGJ)

RNP APCH

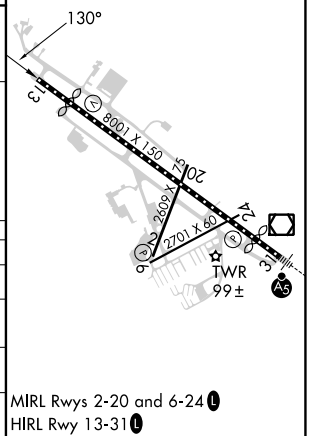
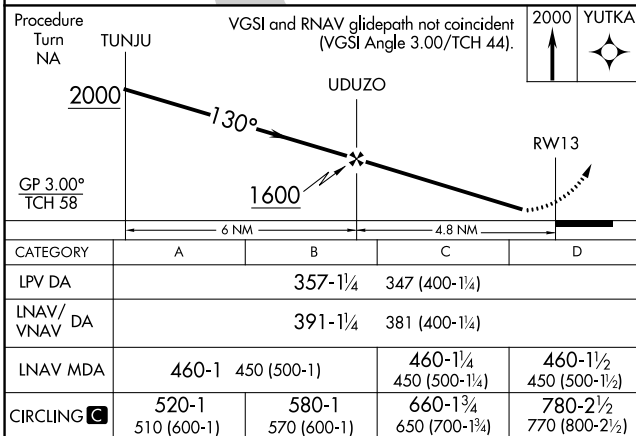
▼ Baro-VNAV NA when using Jacksonville NAS (Towers Fld) altimeter setting. For uncompensated Baro-VNAV systems, LNAV/VNAV NA below -1.5°C (5°F) or above 54°C (130°F). Rwy 13 helicopter visibility reduction below ¼ SM NA. When local altimeter setting not received, use Jacksonville NAS (Towers Fld) altimeter setting; increase all DA 57 feet and all MDA 60 feet. Increase LPV and LNAV/VNAV all Cats, LNAV Cat C and Circling Cat C/D visibility ¼ SM. Circling Rwy 2, 6 NA at night.

MISSED APPROACH:  
Climb to 2000 direct YUTKA and hold.

ATIS <b>119.625</b>	JACKSONVILLE APP CON <b>120.75</b>	ST AUGUSTINE TOWER ★ <b>127.625 (CTAF) 269.475</b>	GND CON <b>121.175 251.125</b>	UNICOM <b>122.95</b>
------------------------	---------------------------------------	---	-----------------------------------	-------------------------



ELEV 10	TDZE 10
---------	---------



SE-3, 13 JUN 2024 to 11 JUL 2024

SE-3, 13 JUN 2024 to 11 JUL 2024