

WAAS CH 78218 W27A	APP CRS 267°	Rwy Idg TDZE Apt Elev	4000 974 979
--	------------------------	-----------------------------	---

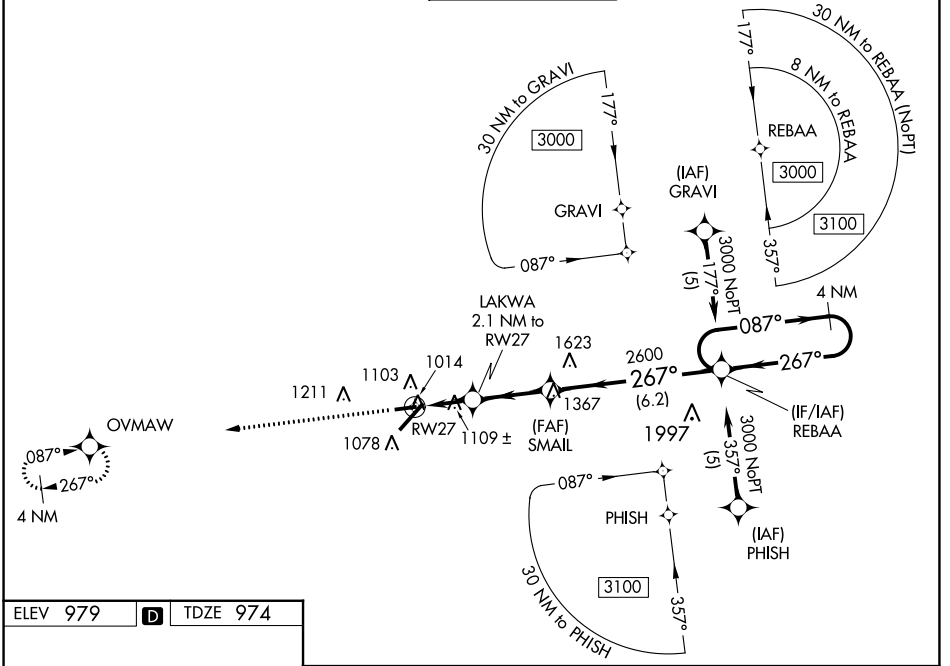
RNAV (GPS) RWY 27

BLUE GRASS (LEX)

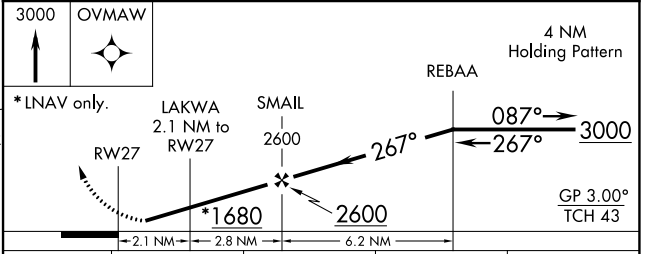
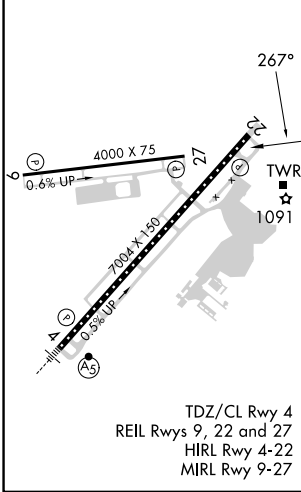
⚠ Baro-VNAV NA when using Frankfort altimeter setting. For uncompensated Baro-VNAV systems, LNAV/VNAV NA below -16°C (4°F) or above 47°C (116°F). DME/DME RNP-0.3 NA. Helicopter visibility reduction below 1 SM NA. When local altimeter setting not received, use Frankfort altimeter setting; increase LPV DA to 1421 feet and all visibilities ¼ SM; increase LNAV/VNAV DA to 1450 feet and all visibilities ¼ SM; increase all MDAs 80 feet and visibility Cats C and D ¼ SM.

MISSED APPROACH: Climb to 3000 direct OVMAW and hold.

ATIS 126.3	LEXINGTON APP CON 120.15 259.3 (040°-220°) 120.75 298.9 (221°-039°)	LEXINGTON TOWER 119.1 257.8	GND CON 121.9	CLNC DEL 132.35
----------------------	---	---------------------------------------	-------------------------	---------------------------



ELEV 979	D	TDZE 974
----------	----------	----------



CATEGORY	A	B	C	D
LPV DA		1359-1¼	385 (400-1¼)	
LNAV/VNAV DA		1388-1⅜	414 (500-1⅜)	
LNAV MDA	1360-1	386 (400-1)	1360-1⅛	386 (400-1⅛)
C CIRCLING	1420-1 441 (500-1)	1440-1 461 (500-1)	1520-1½ 541 (600-1½)	1600-2 621 (700-2)

SE-1, 13 JUN 2024 to 11 JUL 2024

SE-1, 13 JUN 2024 to 11 JUL 2024