

| | | | |
|--|------------------------|-----------------------------|---|
| WAAS CH 93644 W15A | APP CRS 155° | Rwy Idg TDZE Apt Elev | 4423 617 617 |
|--|------------------------|-----------------------------|---|

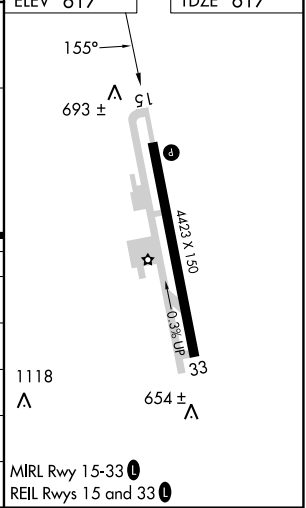
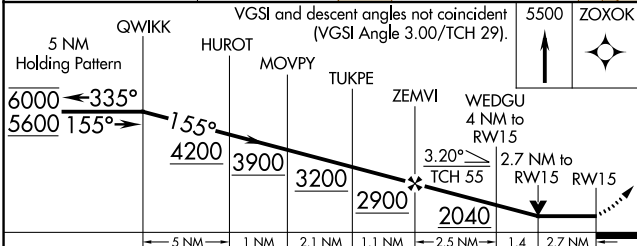
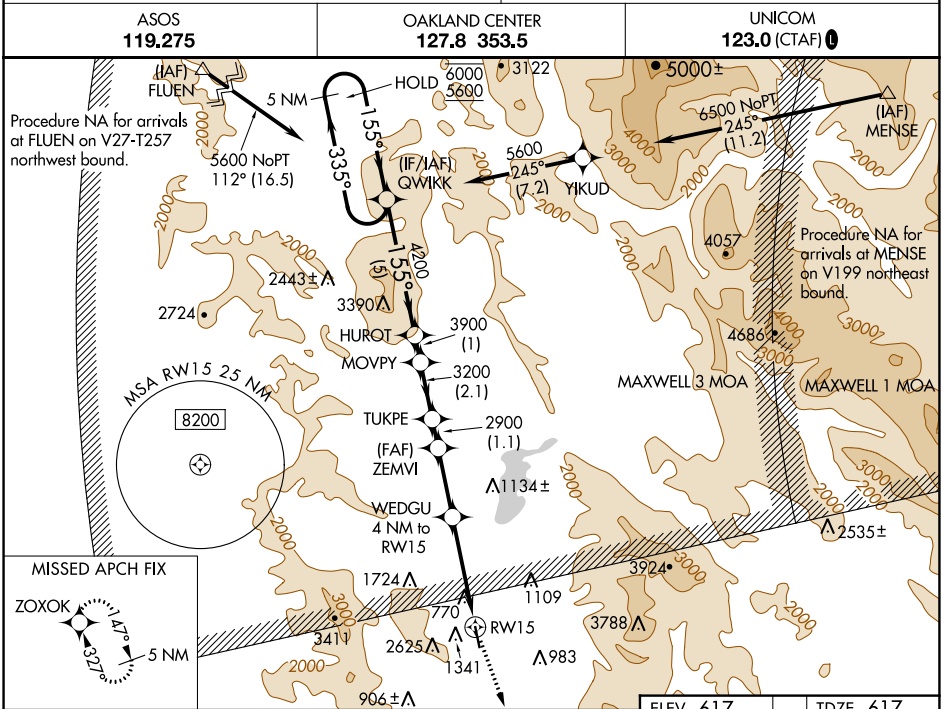
RNAV (GPS) RWY 15

UKIAH MUNI (UKI)

RNP APCH - GPS.

⚠ Circling NA southwest of Rwy 15-33. Circling Rwy 33 NA at night. Rwy 15 helicopter visibility reduction below 3/4 SM NA. When local altimeter setting not received, procedure NA.

⚠ MISSED APPROACH: Climb to 5500 direct ZOXOK and hold, continue climb-in-hold to 5500.
*Missed approach requires minimum climb of 350 feet per NM to 3300.



| CATEGORY | A | B | C | D |
|-------------------|---------------------------|---------------------------|--------------------------|-------------------------|
| LP MDA* | 1500-1¼ 883 (900-1¼) | 1540-1¼ 923 (1000-1¼) | 1560-2½ 943 (1000-2½) | 1580-3 963 (1000-3) |
| LP MDA | 2120-1¼ 1503 (1600-1¼) | 2120-1½ 1503 (1600-1½) | 2120-3 | 1503 (1600-3) |
| LNAV MDA* | 1960-1¼ 1343 (1400-1¼) | 1960-1½ 1343 (1400-1½) | 1960-3 | 1343 (1400-3) |
| LNAV MDA | 2220-1¼ 1603 (1700-1¼) | 2220-1½ 1603 (1700-1½) | 2220-3 | 1603 (1700-3) |
| C CIRCLING | 2220-1¼ 1603 (1700-1¼) | 2220-1½ 1603 (1700-1½) | 2220-3 1603 (1700-3) | 2780-3 2163 (2200-3) |

SW-2, 13 JUN 2024 to 11 JUL 2024

SW-2, 13 JUN 2024 to 11 JUL 2024