

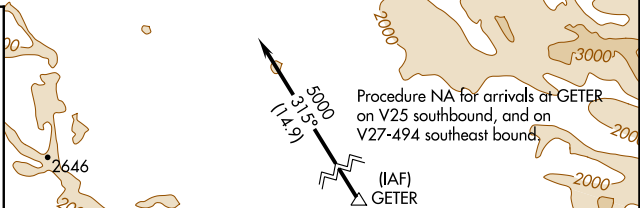
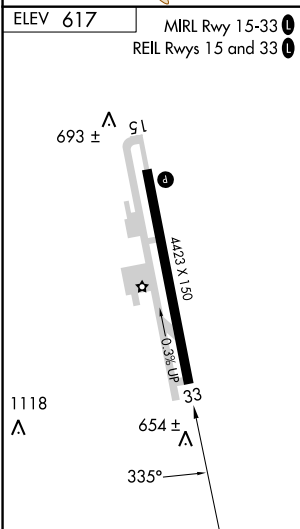
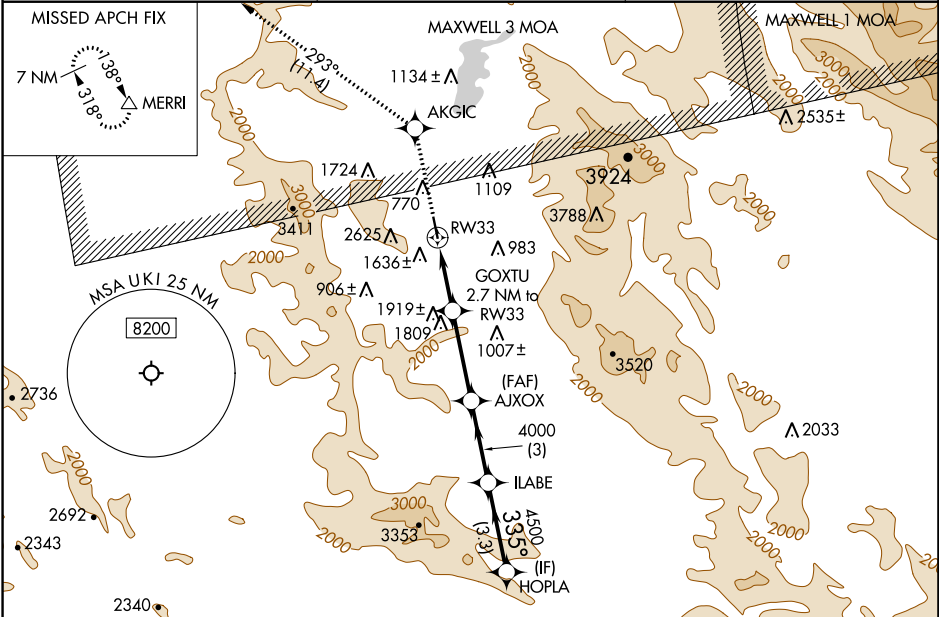
APP CRS	Rwy Idg	N/A
335°	TDZE	N/A
	Apt Elev	617

RNAV (GPS)-B

UKIAH MUNI (UKI)

RNP APCH - GPS.	MISSED APPROACH: Climb to 6700 direct AKGIC and on track 293° to MERRI and hold, continue climb-in-hold to 6700.
<p>▽ Circling NA southwest of Rwy 15-33. Circling Rwy 33 NA at night.</p> <p>▲ Rwy 33 helicopter visibility reduction below 1 SM NA. When local altimeter setting not received, procedure NA.</p>	

ASOS 119.275	OAKLAND CENTER 127.8 353.5	UNICOM 123.0 (CTAF) 0
------------------------	--------------------------------------	---------------------------------



6700	AKGIC	tr 293°	MERRI	HOPLA	
↑	◆		△		
GOXTU 2.7 NM to RW33		AJXOX		ILABE	5000
RW33 7.62° TCH 40		4000		4500	335°
2.7 NM		3.3 NM		3.3 NM	
CATEGORY	A	B	C	D	
☐ CIRCLING	2080-1¼ 1463 (1500-1¼)	2100-1½ 1483 (1500-1½)	2140-3 1523 (1600-3)	2780-3 2163 (2200-3)	

SW-2, 13 JUN 2024 to 11 JUL 2024

SW-2, 13 JUN 2024 to 11 JUL 2024