

# HI-ILS Y or LOC Y RWY 18

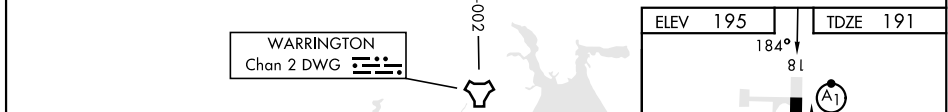
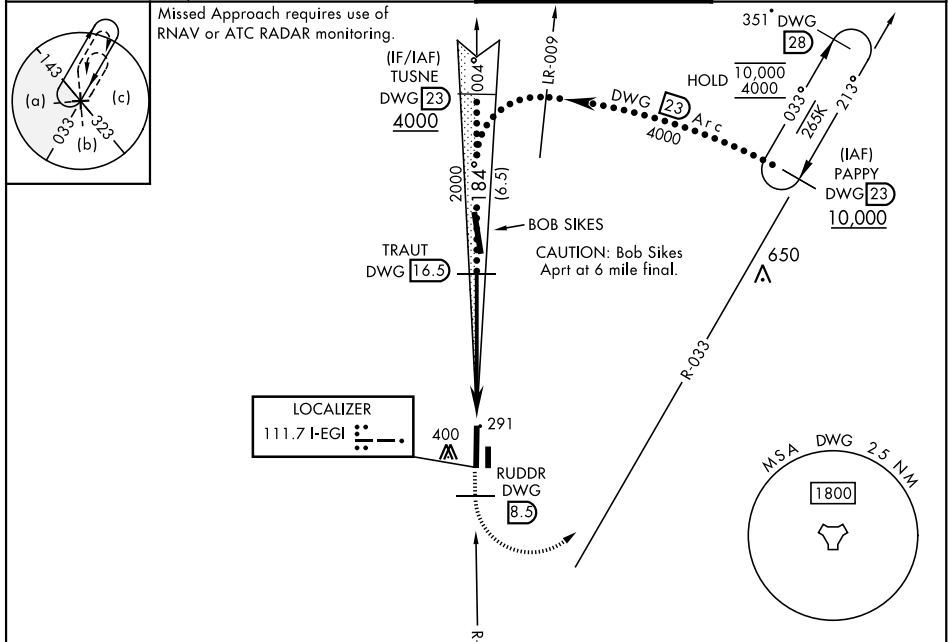
LOC I-EGI <b>111.7</b>	APCH CRS <b>184°</b>	Rwy Idg 8025 TDZE 191 Arprt Elev 195	AL-699 [USAF]	DUKE FLD (EGLIN AF AUX NR3) (KEGI)
---------------------------	-------------------------	---	---------------	------------------------------------

\* When ALS inop, increase RVR to 40, vis to ¾ mile.  
 \*\* When ALS inop, increase RVR to 55, vis to 1 mile.

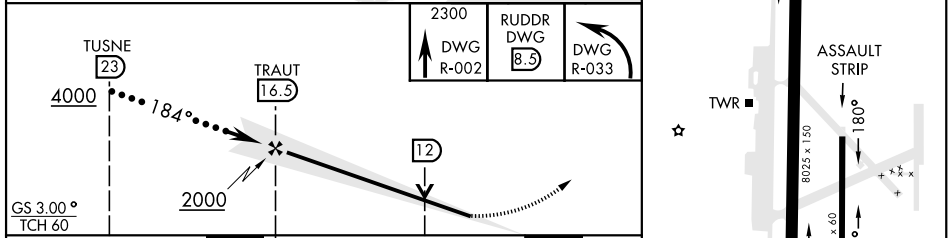
ALSF-1

MISSED APPROACH: Climb on DWG R-002 to 8.5 DME (RUDDR), then climbing left turn to 2300 direct DWG R-033/23 DME (PAPPY) and hold.

ATIS ★ <b>244.575</b>	EGLIN APP CON <b>125.1 281.45</b> (271°-089°) <b>132.1 360.6</b> (090°-270°)	TOWER ★ <b>133.2 290.425</b>	GND CON <b>123.25 251.125</b>
--------------------------	--	---------------------------------	----------------------------------



EMERG SAFE ALT 100 NM 3500



CATEGORY	C	D	E
S-ILS 18 *	391/24	200 (200-½)	
S-LOC 18 **	540/24	349 (400-¾)	
CIRCLING	700-1½ 505 (600-1½)	760-2 565 (600-2)	780-2 585 (600-2)

HIRL Rwy 18-36	36
FAF to MAP 5.5 NM	
Knots	120 140 160 180 200
Min:Sec	2:45 2:21 2:04 1:50 1:39

# HI-ILS Y or LOC Y RWY 18

SE-3, 13 JUN 2024 to 11 JUL 2024

SE-3, 13 JUN 2024 to 11 JUL 2024