

WAAS CH 56405 W25A	APP CRS 254°	Rwy Idg TDZE 812 Apt Elev 813
--	------------------------	---

RNAV (GPS) RWY 25

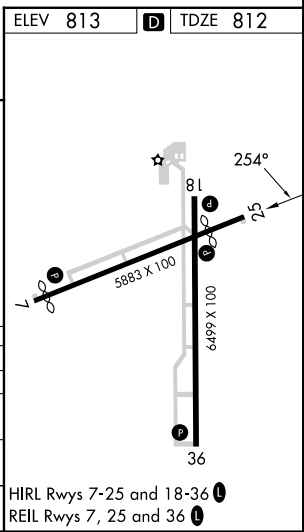
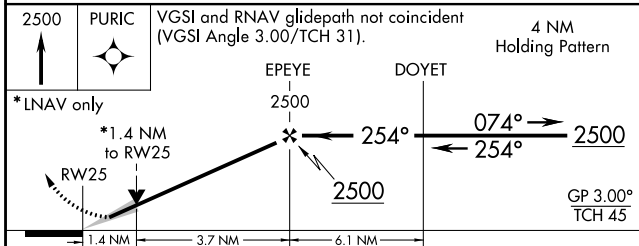
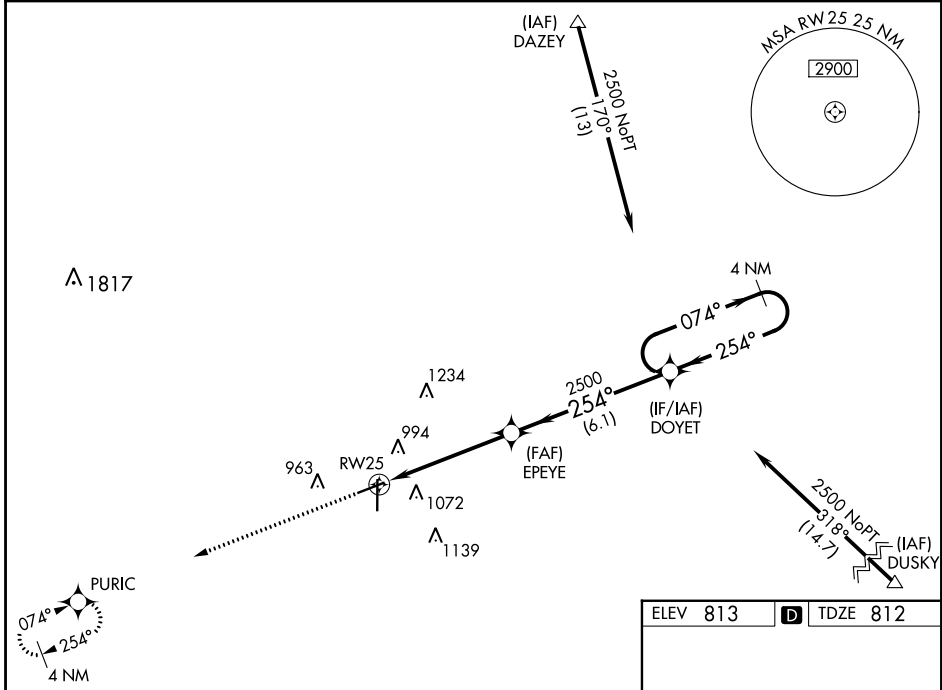
FINDLAY (F'DY)

RNP APCH-GPS.

⚠ For uncompensated Baro-VNAV systems, LNAV/VNAV NA below -16°C or above 47°C. Baro-VNAV and VDP NA when using Lima Allen County altimeter setting. When local altimeter setting not received, use Lima Allen County altimeter setting; increase all DAs/MDAs 80 feet; increase LPV visibility 1/8 SM all Cats; increase LNAV Cat C/D and Circling Cat C/D visibility 1/4 SM. Circling Rwy 7 NA at night.

MISSED APPROACH: Climb to 2500 direct PURIC and hold.

ASOS 132.85	TOLEDO APP CON 120.8 317.55	UNICOM 122.725 (CTAF) 0
-----------------------	---------------------------------------	-----------------------------------



CATEGORY	A	B	C	D
LPV DA	1116-1		304 (400-1)	
LNAV/VNAV DA	1411-2		599 (600-2)	
LNAV MDA	1280-1	468 (500-1)	1280-1 1/8 468 (500-1 3/8)	1280-1 1/2 468 (500-1 1/2)
CIRCLING	1440-1	627 (700-1)	1440-1 3/4 627 (700-1 3/4)	1540-2 1/4 727 (800-2 1/4)

HIRL Rws 7-25 and 18-36 0
REIL Rws 7, 25 and 36 0