

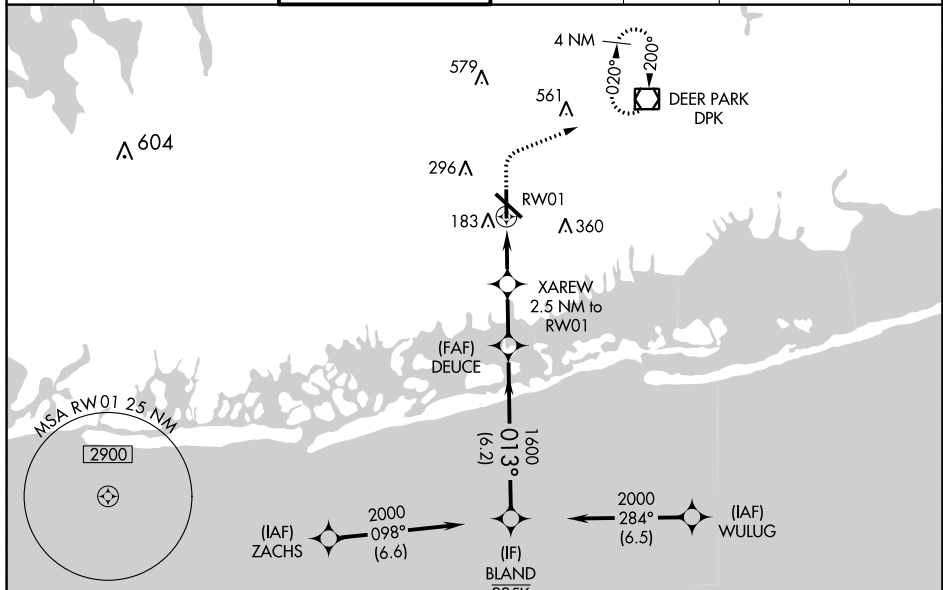
WAAS CH <b>82524</b> <b>W01A</b>	APP CRS <b>013°</b>	Rwy Idg TDZE <b>72</b> Apt Elev <b>80</b>	<b>5517</b>
--	------------------------	---	-------------

# RNAV (GPS) RWY 1

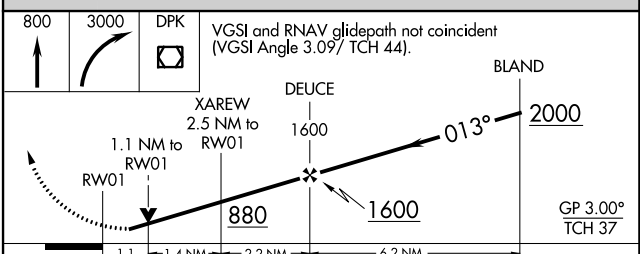
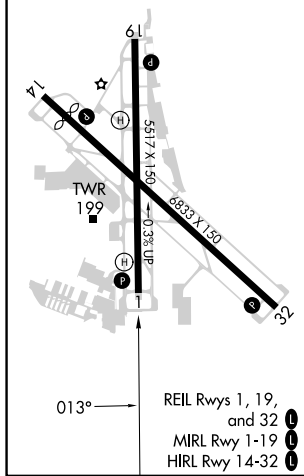
REPUBLIC (F'R'G)

RNP APCH - GPS.		MISSED APPROACH: (Do not exceed 190K until DPK VOR/DME) Climb to 800 then climbing right turn to 3000 direct DPK VOR/DME and hold, continue climb-in-hold to 3000.	
For uncompensated Baro-VNAV systems, LNAV/VNAV NA below -12°C or above 54°C. Rwy 1 helicopter visibility reduction below 3/4 SM NA.			

ATIS <b>126.65</b>	NEW YORK APP CON <b>128.125 269.0</b>	REPUBLIC TOWER * <b>118.8 (CTAF) 0 279.65</b>	GND CON <b>121.6 269.6</b>	CLNC DEL <b>128.25</b>	CLNC DEL <b>128.25</b> (When twr closed)	UNICOM <b>122.95</b>
-----------------------	--	--	-------------------------------	---------------------------	--	-------------------------



ELEV 80	<b>D</b>	TDZE 72
---------	----------	---------



CATEGORY	A	B	C	D
LPV DA		335-7/8	263 (300-7/8)	
LNAV/VNAV DA		370-7/8	298 (300-7/8)	
LNAV MDA	460-1	388 (400-1)	460-1 1/8	388 (400-1 1/8)
CIRCLING	640-1 560 (600-1)	720-1 640 (700-1)	860-2 1/4 780 (800-2 1/4)	1000-3 920 (1000-3)

NE-2, 13 JUN 2024 to 11 JUL 2024

NE-2, 13 JUN 2024 to 11 JUL 2024