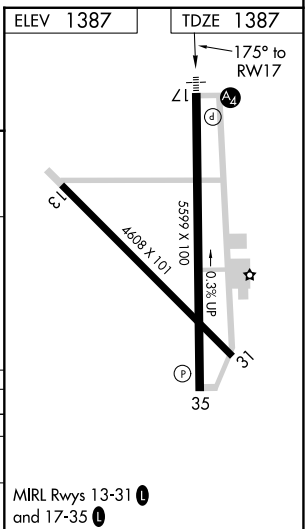
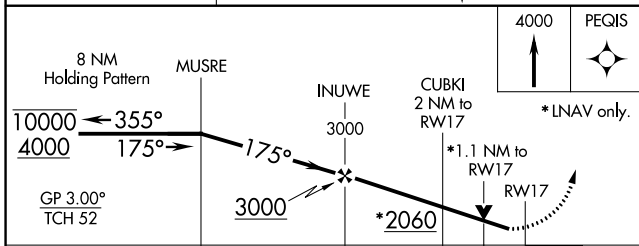
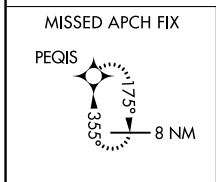
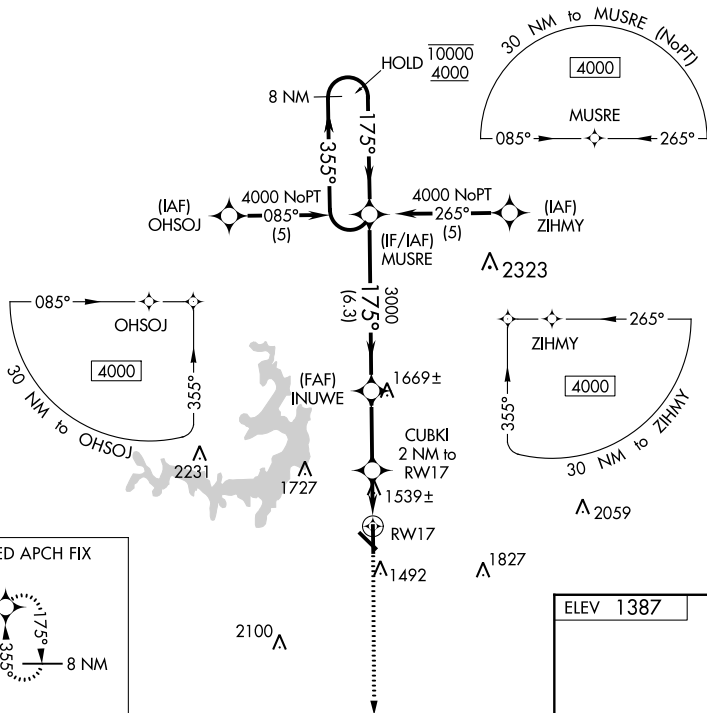


WAAS CH <b>70325</b> <b>W17A</b>	APP CRS <b>175°</b>	Rwy Idg TDZE Apt Elev	<b>5599</b> <b>1387</b> <b>1387</b>
--	------------------------	-----------------------------	---

# RNAV (GPS) RWY 17

BROWNWOOD RGNL (BWD)

RNP APCH.		MALS	MISSED APPROACH: Climb to 4000 direct PEQIS and hold.
Rwy 17 helicopter visibility reduction below 3/4 SM NA.			
AWOS-3 <b>118.325</b>	FORT WORTH CENTER <b>127.45 290.3</b>	UNICOM <b>122.8 (CTAF)</b>	



CATEGORY	A	B	C	D
LPV DA	1637-3/4		250 (300-3/4)	
LNAV MDA	1800-3/4	413 (500-3/4)	1800-1 1/4	413 (500-1 1/4)
CIRCLING	1840-1	453 (500-1)	1980-1 1/2 593 (600-1 1/2)	2160-2 1/2 773 (800-2 1/2)

MIRL Rwy 13-31  
and 17-35

SC-3, 13 JUN 2024 to 11 JUL 2024

SC-3, 13 JUN 2024 to 11 JUL 2024