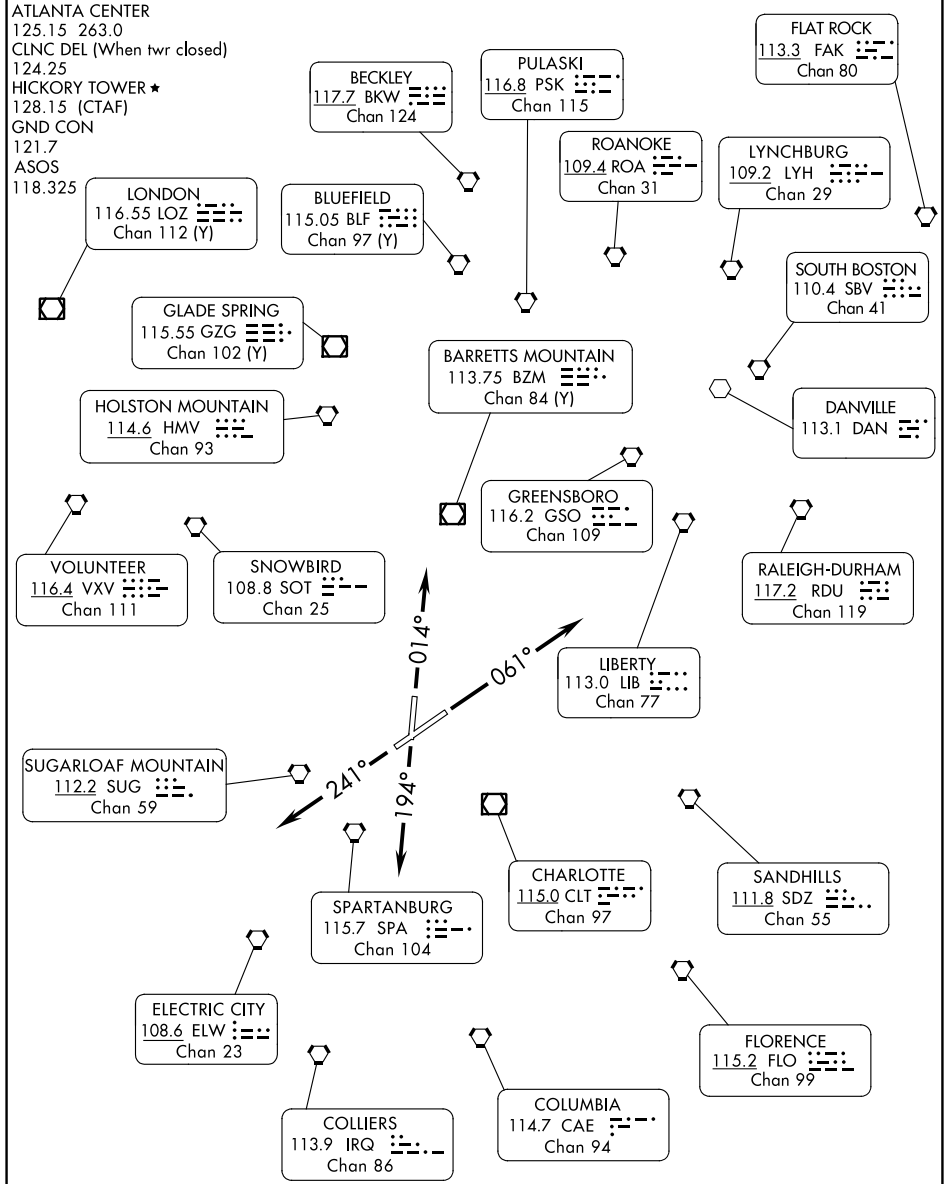


(HKY3.HKY) 24081

AL-706 (FAA)

HICKORY RGNL (HKY)
HICKORY, NORTH CAROLINA

HICKORY THREE DEPARTURE (OBSTACLE)



SE-2, 13 JUN 2024 to 11 JUL 2024

SE-2, 13 JUN 2024 to 11 JUL 2024

TAKEOFF MINIMUMS

Rwy 1, 6, 24: Standard with minimum climb of 340' per NM to 4000.

Rwy 19: Standard with minimum climb of 286' per NM to 4000.

(CONTINUED ON FOLLOWING PAGE)

NOTE: Chart not to scale.

HICKORY THREE DEPARTURE (OBSTACLE)

HICKORY, NORTH CAROLINA
HICKORY RGNL (HKY)

(HKY3.HKY) 09FEB12