

WAAS CH 82623 W06A	APP CRS 061°	Rwy Idg 6401 TDZE 1152 Apt Elev 1190
----------------------------------------	------------------------	-----------------------------------------------------------------

RNAV (GPS) RWY 6

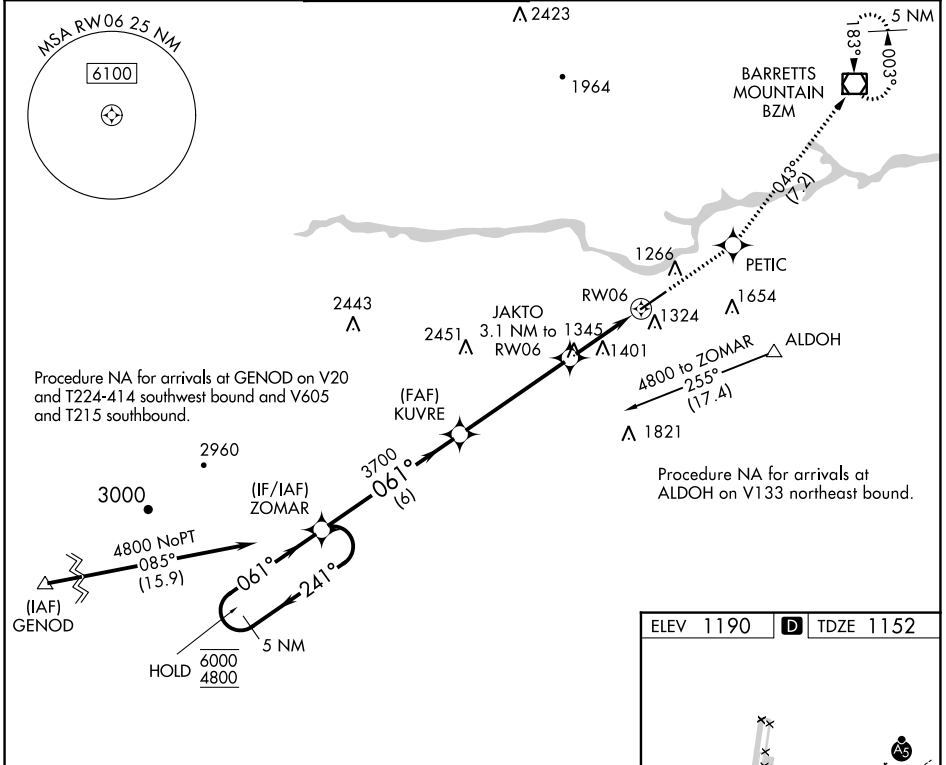
HICKORY RGNL (HKY)

RNP APCH-GPS.

MISSED APPROACH: Climb to 4100 direct PETIC and on track 043° to BZM VOR/DME and hold, continue climb-in-hold to 4100.

▽
▲ Rwy 6 helicopter visibility reduction below 3/4 SM NA.

ASOS 118.325	ATLANTA CENTER 125.15 263.0	HICKORY TOWER ★ 128.15 (CTAF) 0	GND CON 121.7	CLNC DEL 121.7	CLNC DEL 124.25 (When twr closed)
------------------------	---------------------------------------	-------------------------------------------	-------------------------	--------------------------	------------------------------------------------



SE-2, 13 JUN 2024 to 11 JUL 2024

SE-2, 13 JUN 2024 to 11 JUL 2024

5 NM Holding Pattern		VGSI and descent angles not coincident (VGSI Angle 3.00/TCH 57).		4100	PETIC	BZM
ZOMAR		KUVRE		JAKTO 3.1 NM to RW06	tr 043°	
6000 ← 241°	4800 → 061°	3700	2160	1.3 NM to RW06		
6 NM		4.8 NM		1.8 NM		1.3 NM
CATEGORY	A	B	C	D		
LP MDA	1600-1	448 (500-1)	1600-1 3/8	448 (500-1 3/8)		
LNAV MDA	1740-1	588 (600-1)	1740-1 3/4	588 (600-1 3/4)		
CIRCLING	1740-1	550 (600-1)	2020-2 1/2	2040-2 3/4		
			830 (900-2 1/2)	850 (900-2 3/4)		

