

WAAS CH <b>45907</b> <b>W18A</b>	APP CRS <b>183°</b>	Rwy Idg TDZE Apt Elev	<b>5001</b> <b>663</b> <b>663</b>
--	------------------------	-----------------------------	---

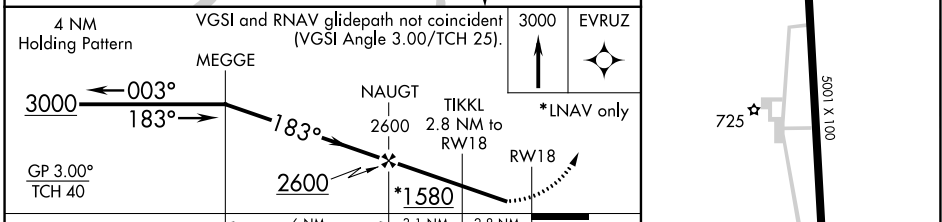
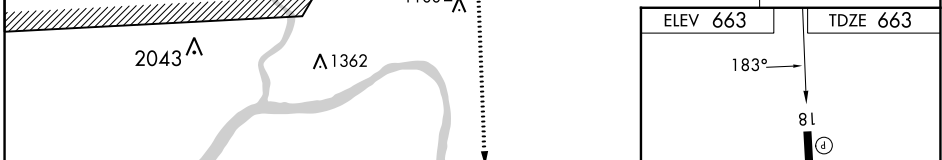
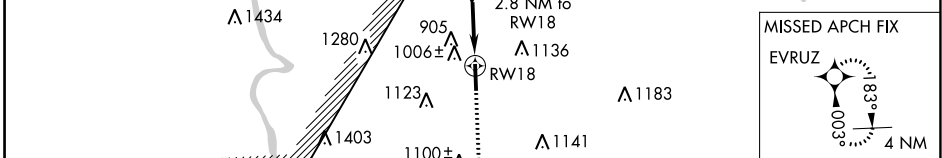
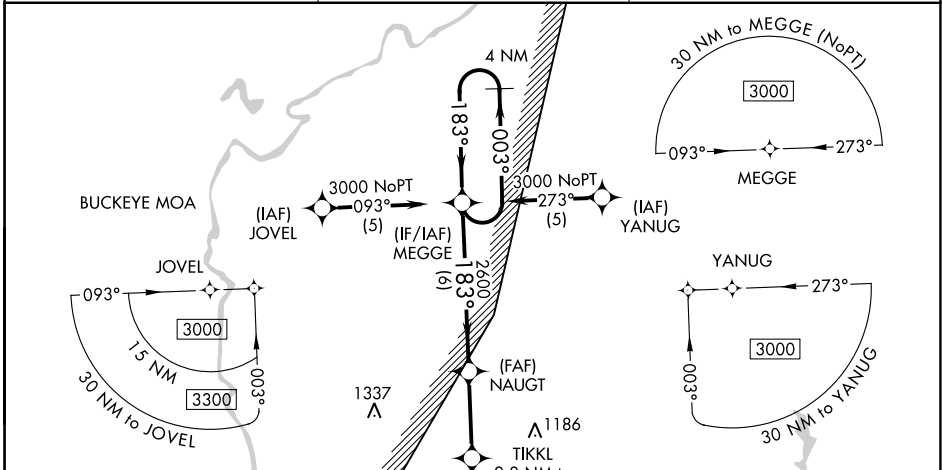
# RNAV (GPS) RWY 18

GREATER PORTSMOUTH RGNL (PMH)

**▽** DME/DME RNP-0.3 NA. Visibility reduction by helicopters NA.  
**△ NA** When local altimeter setting not received, use Huntington altimeter setting and increase LPV DA to 1106 feet and visibility all Cats ¼ SM; increase all MDA 100 feet and LNAV Cat C/D visibility ½ SM and Circling Cat B/C/D ¼ SM.

MISSED APPROACH:  
Climb to 3000 direct EVRUZ and hold.

AWOS-3 <b>125.175</b>	HUNTINGTON APP CON <b>128.4 270.1</b>	UNICOM <b>122.8 (CTAF)</b>
--------------------------	--	-------------------------------



CATEGORY	A	B	C	D
LPV DA	1010-1¼ 347 (400-1¼)			
LNAV MDA	1260-1 597 (600-1)	1260-1½ 597 (600-1½)	1260-1¾ 597 (600-1¾)	
CIRCLING	1340-1 677 (700-1)	1440-1 777 (800-1)	1440-2¼ 777 (800-2¼)	1540-2¾ 877 (900-2¾)

REIL Rwy 18 and 36  
MIRL Rwy 18-36

EC-2, 13 JUN 2024 to 11 JUL 2024

EC-2, 13 JUN 2024 to 11 JUL 2024