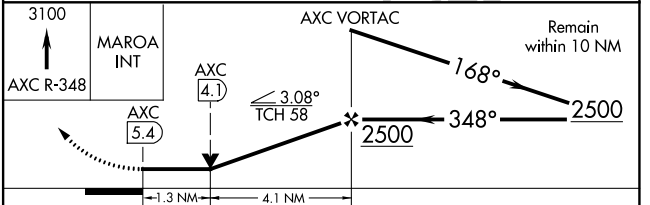
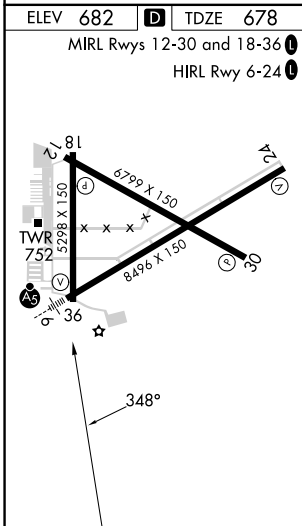
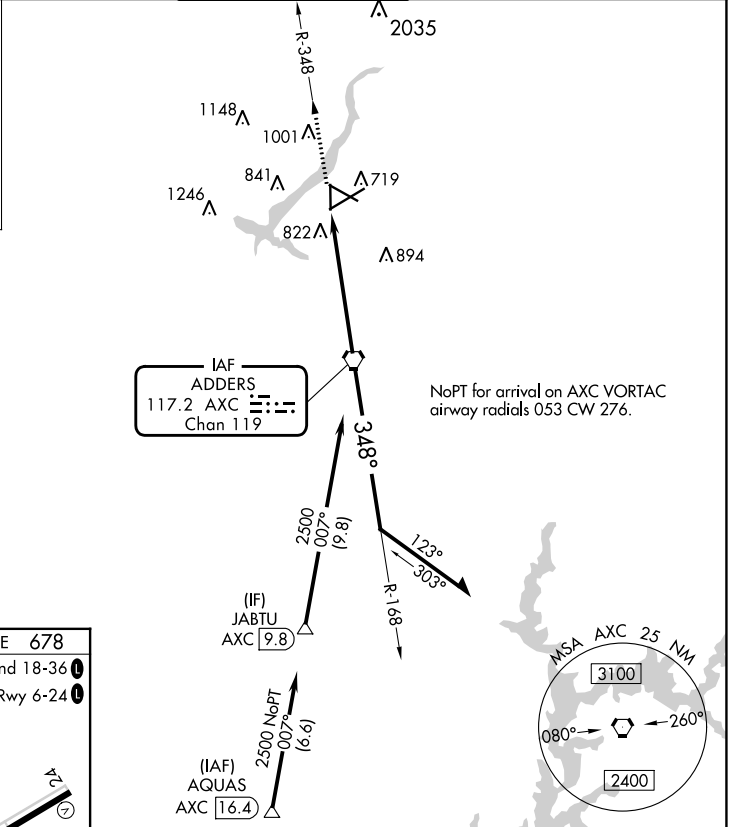
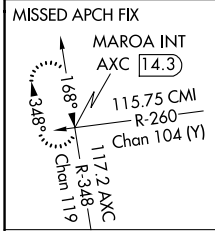


VORTAC AXC <b>117.2</b> Chan <b>119</b>	APP CRS <b>348°</b>	Rwy Idg <b>5298</b> TDZE <b>678</b> Apt Elev <b>682</b>
---	------------------------	---

# VOR RWY 36

DECATUR (DEC)

DME required.		MISSED APPROACH: Climb to 3100 on AXC VORTAC R-348 to MAROA INT/AXC 14.3 DME and hold.	
<p>▼ Rwy 36 helicopter visibility reduction below ¼ NA. When local altimeter setting not received, use Lincoln altimeter setting and increase all MDA 80 feet, increase S-36 Cat C/D and Circling Cat C/D visibility ¼ SM. VDP NA when using Lincoln altimeter setting.</p>			
ATIS <b>126.35</b>	CHAMPAIGN APP CON ★ <b>132.85 290.225</b>	DECATUR TOWER ★ <b>118.9 (CTAF) 0 291.775</b>	GND CON <b>121.75 291.775</b>
		UNICOM <b>122.95</b>	



CATEGORY	A	B	C	D
S-36	1160-1	482 (500-1)	1160-1½	482 (500-1½)
☑ CIRCLING	1160-1 478 (500-1)	1240-1 558 (600-1)	1360-2 678 (700-2)	1360-2¼ 678 (700-2¼)

EC-3, 13 JUN 2024 to 11 JUL 2024

EC-3, 13 JUN 2024 to 11 JUL 2024