

VORTAC APN 108.8 Chan 25	APP CRS 175°	Rwy Idg TDZE Apt Elev	9001 683 690
---------------------------------------	------------------------	-----------------------------	---

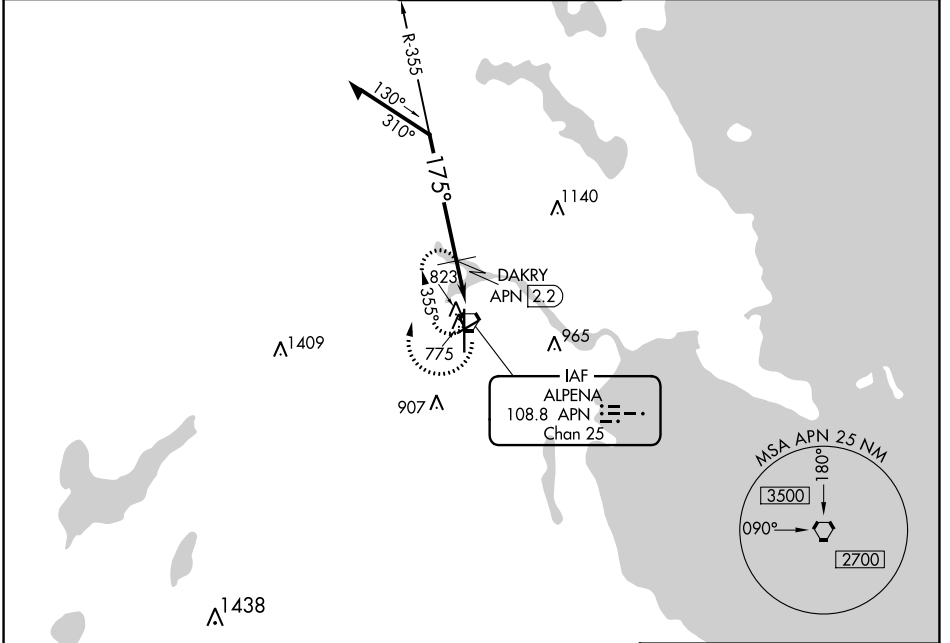
VOR RWY 19

ALPENA COUNTY RGNL (APN)

Rwy 19 helicopter visibility reduction below 3/4 SM NA.

MISSED APPROACH: Climbing right turn to 2500 in APN VORTAC holding pattern.

ATIS 120.675 327.05	ALPENA APP CON ★ 128.425 379.3	ALPENA TOWER ★ 121.35 (CTAF) 318.1	GND CON 121.9 275.8	UNICOM 122.95
-------------------------------	--	--	-------------------------------	-------------------------



EC-1, 13 JUN 2024 to 11 JUL 2024

EC-1, 13 JUN 2024 to 11 JUL 2024

Remain within 10 NM		APN VORTAC		2500	APN
VGSI and descent angles not coincident (VGSI Angle 3.00/TCH 39).		2500	355°	175°	35°
		1340	3.18°	TCH 55	0.6 NM
					1.2 NM
CATEGORY	A	B	C	D	
S-19	1340-1	657 (700-1)	1340-1 7/8	657 (700-1 7/8)	
C CIRCLING	1340-1	650 (700-1)	1340-1 7/8	1340-2	650 (700-2)
DAKRY FIX MINIMUMS					
S-19	1100-1	417 (500-1)	1100-1 1/8	417 (500-1 1/8)	
C CIRCLING	1140-1	450 (500-1)	1220-1 1/2	1280-2	530 (600-1 1/2) 590 (600-2)

