

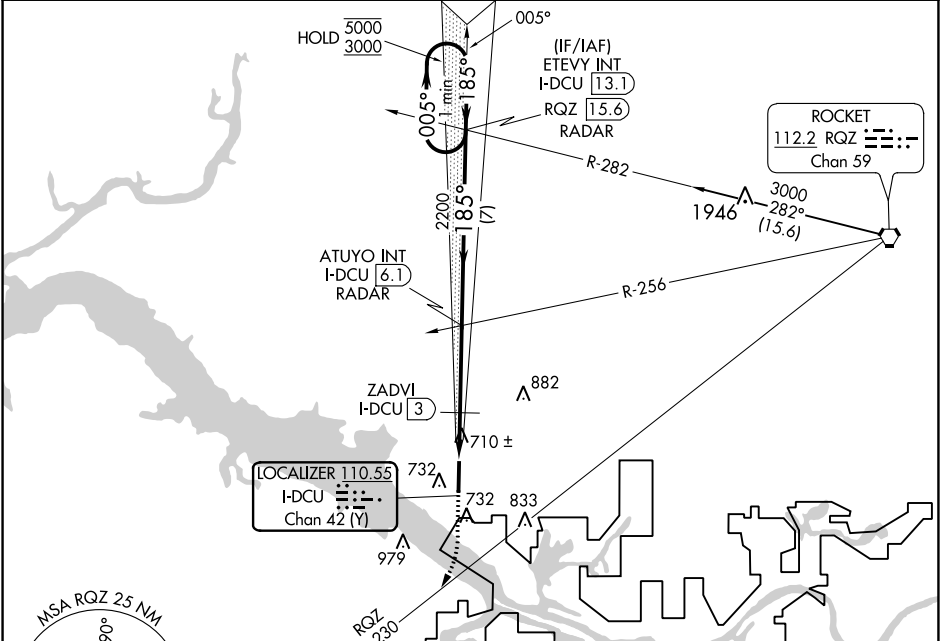
LOC/DME I-DCU 110.55 Chan 42 (Y)	APP CRS 185°	Rwy ldg 6107 TDZE 592 Apt Elev 592
---	------------------------	---

ILS or LOC RWY 18
PRYOR FLD RGNL (DCU)

DME required.

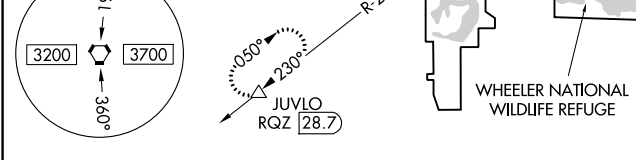
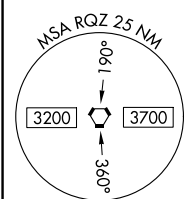
MISSED APPROACH: Climb to 1700, then climbing right turn to 3000 on RQZ VORTAC R-230 to JUVLO/RQZ 28.7 DME and hold.

ASOS 118.375	HUNTSVILLE APP CON* 118.05 239.0	UNICOM 123.075 (CTAF) 0
------------------------	--	-----------------------------------

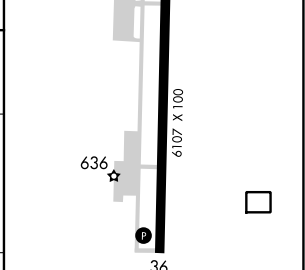
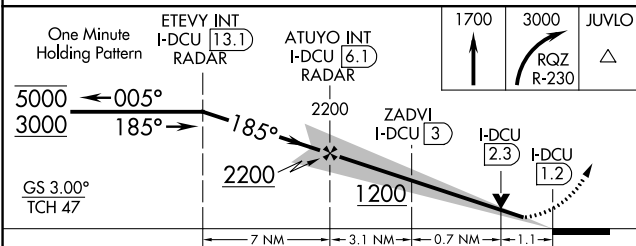


SE-4, 13 JUN 2024 to 11 JUL 2024

SE-4, 13 JUN 2024 to 11 JUL 2024



ELEV 592	TDZE 592
185° 4.9 NM from FAF	81



One Minute Holding Pattern	ETEVY INT I-DCU [13.1] RADAR	ATUYO INT I-DCU [6.1] RADAR	1700	3000	JUVLO
5000 ← 005°	2200	ZADVI I-DCU [3]	↑	↘ RQZ R-230	△
3000 → 185°	1200	I-DCU [2.3]			
GS 3.00° TCH 47		I-DCU [1.2]			
	7 NM	3.1 NM			
		0.7 NM			
CATEGORY	A	B	C	D	
S-ILS 18		792-¾	200 (200-¾)		
S-LOC 18	980-1	388 (400-1)	980-1⅛	388 (400-1⅛)	
◻ CIRCLING	1040-1 448 (500-1)	1060-1 468 (500-1)	1340-2¼ 748 (800-2¼)	1340-2½ 748 (800-2½)	

HIRL Rwy 18-36 0					
REIL Rws 18 and 36 0					
FAF to MAP 4.9 NM					
Knots	60	90	120	150	180
Min:Sec	4:54	3:16	2:27	1:58	1:38