

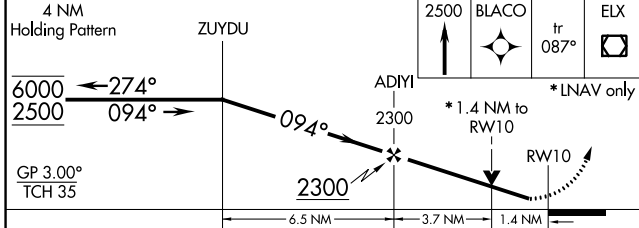
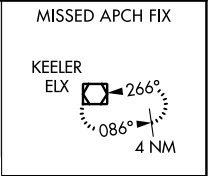
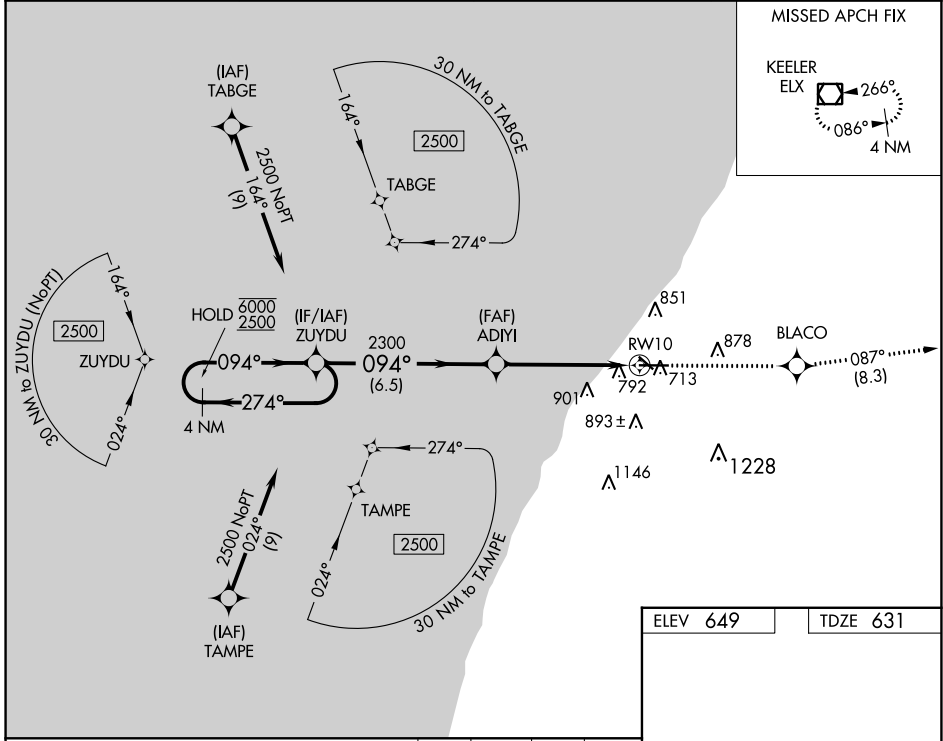
WAAS CH <b>86912</b> <b>W10A</b>	APP CRS <b>094°</b>	Rwy Idg TDZE Apt Elev	<b>6006</b> <b>631</b> <b>649</b>
--	------------------------	-----------------------------	---

# RNAV (GPS) RWY 10

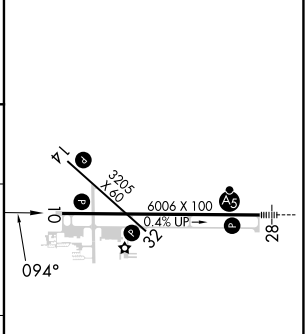
SOUTHWEST MICHIGAN RGNL (BEH)

RNP APCH.		MISSED APPROACH: Climb to 2500 direct BLACO and on track 087° to ELX VOR/DME and hold.	
<p>▼ Rwy 10 helicopter visibility reduction below ¾ SM NA. ▲ For uncompensated Baro-VNAV systems, LNAV/VNAV NA below -20°C or above 54°C.</p>			

ASOS <b>121.55</b>	SOUTH BEND APP CON* <b>118.55 257.8</b>	SOUTH BEND CLNC DEL <b>119.7</b>	UNICOM <b>123.0 (CTAF) 0</b>
-----------------------	--	-------------------------------------	---------------------------------



ELEV 649	TDZE 631
----------	----------



CATEGORY	A	B	C	D
LPV DA		881-7/8	250 (300-7/8)	
LNAV/VNAV DA		1068-1 1/2	437 (500-1 1/2)	
LNAV MDA	1100-1	469 (500-1)	1100-1 3/8	469 (500-1 3/8)

REIL Rwy 10, 14 and 32 0  
MIRL Rwy 14-32 0  
HIRL Rwy 10-28 0