

WAAS CH 45822 W28A	APP CRS 275°	Rwy ldg TDZE Apt Elev	6006 649 649
---------------------------------	------------------------	-----------------------------	---

RNAV (GPS) RWY 28


SOUTHWEST MICHIGAN RGNL (BEH)

RNP APCH.

▼

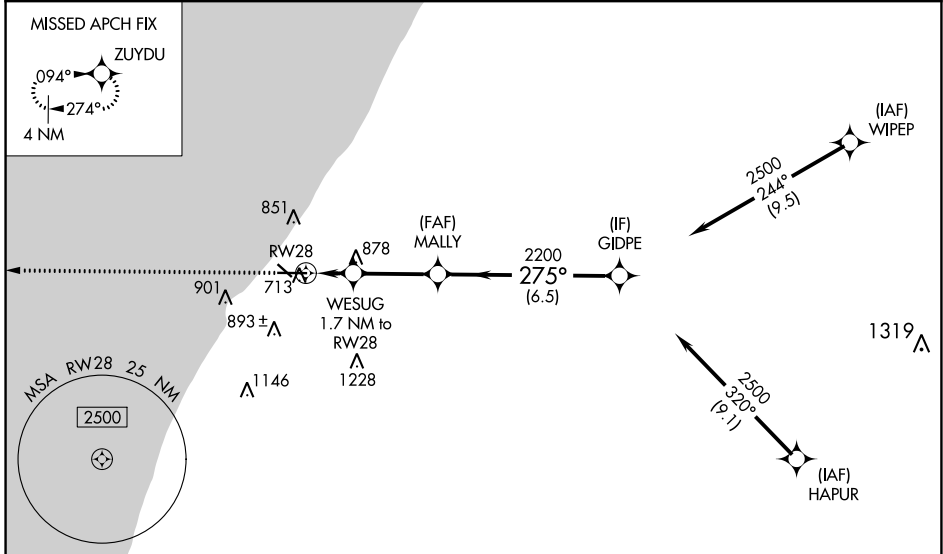
For uncompensated Baro-VNAV systems, LNAV/VNAV NA below -19°C (-2°F) or above 39°C (102°F). Circling Rwy 14, 32 NA at night.

MALS R



MISSED APPROACH: Climb to 2500 direct ZUYDU and hold.

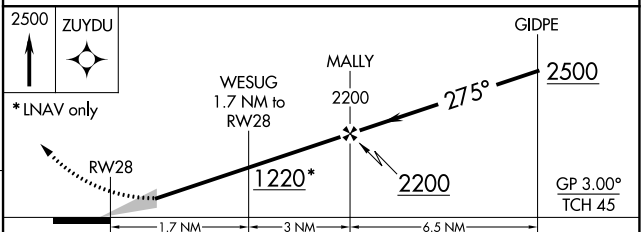
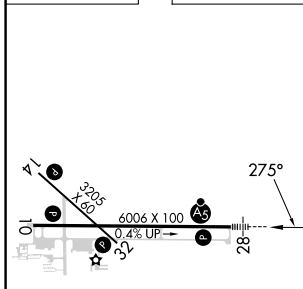
ASOS 121.55	SOUTH BEND APP CON* 118.55 257.8	SOUTH BEND CLNC DEL 119.7	UNICOM 123.0 (CTAF) 0
-----------------------	--	-------------------------------------	---------------------------------




EC-1, 13 JUN 2024 to 11 JUL 2024

EC-1, 13 JUN 2024 to 11 JUL 2024

ELEV 649	TDZE 649
-----------------	-----------------



	A	B	C	D
CATEGORY	A	B	C	D
LPV DA		849-½	200 (200-½)	
LNAV/VNAV DA		941-½	292 (300-½)	
LNAV MDA	1140-½	491 (500-½)	1140-1	491 (500-1)
 CIRCLING	1140-1 491 (500-1)	1160-1 511 (600-1)	1300-1¾ 651 (700-1¾)	1340-2 691 (700-2)

REIL Rwys 10, 14 and 32 0

MIRL Rwy 14-32 0

HIRL Rwy 10-28 0