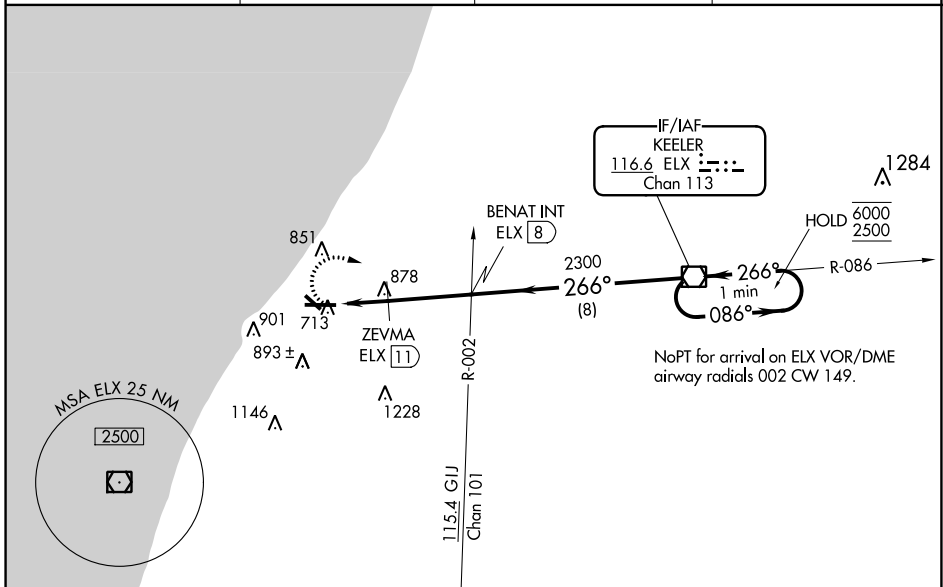


VOR/DME ELX 116.6 Chan 113	APP CRS 266°	Rwy Idg TDZE Apt Elev 6006 649 649
--	------------------------	--

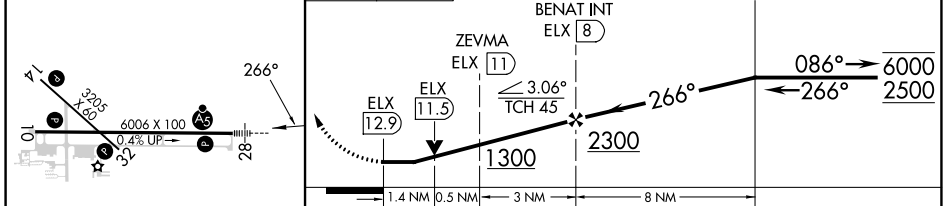
VOR RWY 28

SOUTHWEST MICHIGAN RGNL (BEH)

DME required.		MALSR 	MISSED APPROACH: Climbing right turn to 2500 direct ELX VOR/DME and hold.
⚠ Circling Rwy 14, 32 NA at night. For inop ALS, increase S-28 Cats A and B visibility to 1 SM. ZEVMA fix minimums: for inop ALS, increase S-28 Cats A and B visibility to 1 SM and Cats C and D visibility to 1 3/8 SM.			
ASOS 121.55	SOUTH BEND APP CON* 118.55 257.8	SOUTH BEND CLNC DEL 119.7	UNICOM 123.0 (CTAF)



ELEV 649	TDZE 649	2500	ELX
-----------------	-----------------	------	-----



CATEGORY	A		B		C		D	
	S-28	1300-1	651 (700-1)	1300-1 3/8	651 (700-1 3/8)	1300-1 3/4	651 (700-1 3/4)	1340-2 1/4
C CIRCLING	1300-1	651 (700-1)	1300-1 3/4	651 (700-1 3/4)	1340-2 1/4	691 (700-2 1/4)		
ZEVMA FIX MINIMUMS								
S-28	1140-3/4	491 (500-3/4)	1140-1	491 (500-1)				
C CIRCLING	1140-1	491 (500-1)	1160-1	511 (600-1)	1300-1 3/4	651 (700-1 3/4)	1340-2 1/4	691 (700-2 1/4)

REIL Rwys 10, 14 and 32
MIRL Rwy 14-32
HIRL Rwy 10-28

FAF to MAP 4.9 NM					
Knots	60	90	120	150	180
Min:Sec	4:54	3:16	2:27	1:58	1:38

EC-1, 13 JUN 2024 to 11 JUL 2024

EC-1, 13 JUN 2024 to 11 JUL 2024