

MAYPORT, FLORIDA

COPTER TACAN Z RWY 5

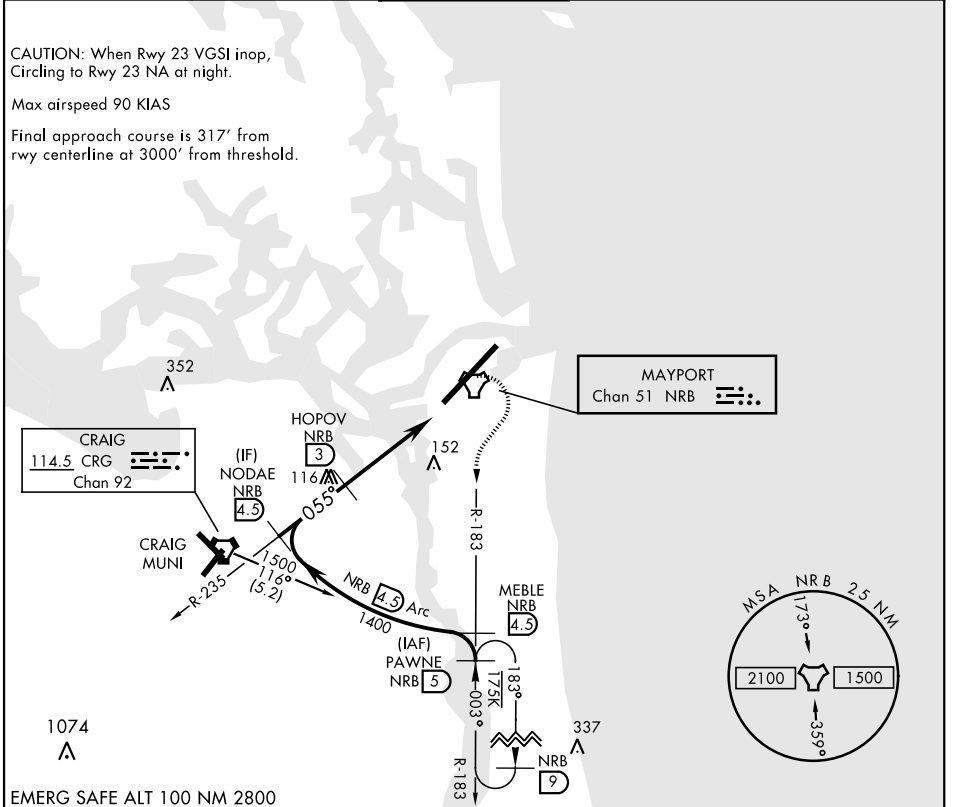
TACAN NRB Chan 51	APCH CRS 055°	Rwy ldg TDZE 12 Arpt Elev 15
-----------------------------	-------------------------	--

AL-722 [USN]

MAYPORT NS (ADM DAVID L. MC DONALD FLD) (KNRB)

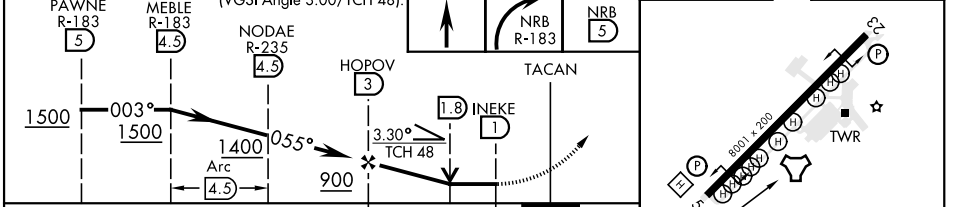
MISSED APPROACH: Climb to 500. Then climbing right turn to 1500 via NRB TACAN R-183 to PAWNE and hold.

ATIS ★ 236.775	JACKSONVILLE APP CON 124.9 308.4	TOWER ★ 118.75 239.30	GND CON 126.5 233.7	ASR/PAR
--------------------------	--	---------------------------------	-------------------------------	---------



EMERG SAFE ALT 100 NM 2800

VGSI and descent angle not coincident (VGSI Angle 3.00/TCH 48).



CATEGORY	COPTER			ELEV 15	TDZE 12
S-5	440-1/2	428	(500-1/2)		
C CIRCLING	560-1	545	(600-1)		

REIL Rwy 5-23
HIRL Rwy 5-23

MAYPORT, FLORIDA
Amdt 4 07OCT21

30°23'N-81°25'W

MAYPORT NS (ADM DAVID L. MC DONALD FLD) (KNRB)

COPTER TACAN Z RWY 5

SE-3, 13 JUN 2024 to 11 JUL 2024

SE-3, 13 JUN 2024 to 11 JUL 2024