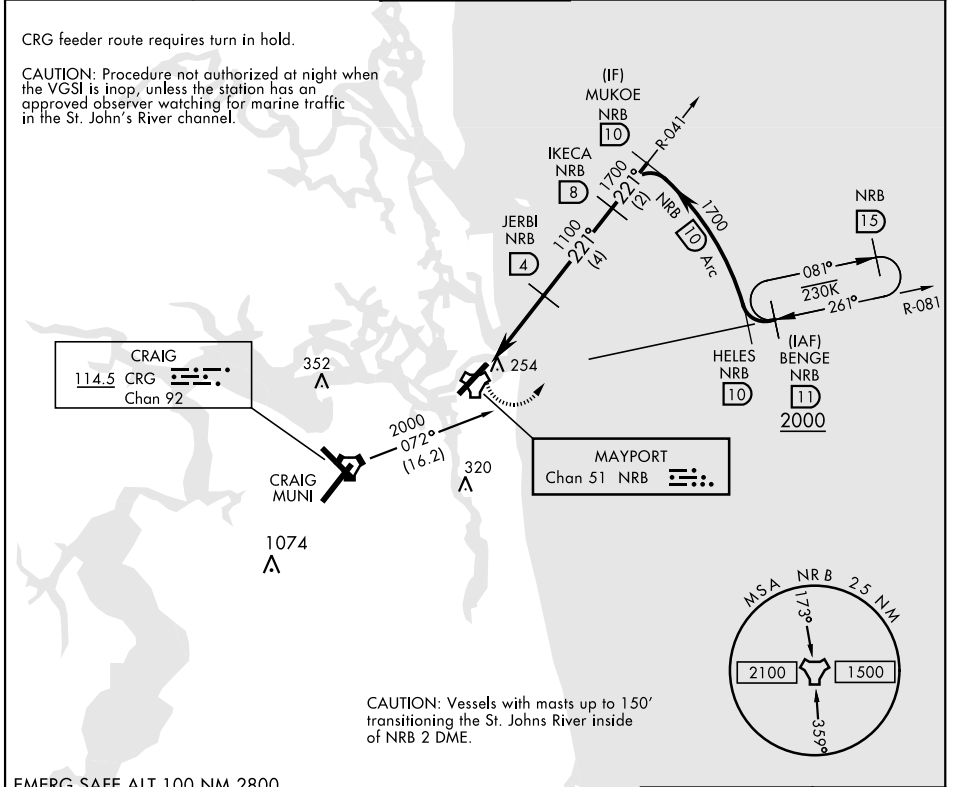


# TACAN Y RWY 23

TACAN NRB Chan <b>51</b>	APCH CRS <b>221°</b>	Rwy ldg TDZE Arpt Elev <b>8001</b> <b>15</b> <b>15</b>	AL-722 [USN] MAYPORT NS (ADM DAVID L. MC DONALD FLD) (KNRB)
-----------------------------	-------------------------	---	--

▼ Visibility reduction by helicopters NA.
 MISSED APPROACH: Climbing left turn to 2000 via NRB TACAN R-081 to BENG E and hold.

ATIS ★ <b>236.775</b>	JACKSONVILLE APP CON <b>124.9 308.4</b>	TOWER ★ <b>118.75 239.30</b>	GND CON <b>126.5 233.7</b>	ASR/PAR
--------------------------	--	---------------------------------	-------------------------------	---------



SE-3, 13 JUN 2024 to 11 JUL 2024

SE-3, 13 JUN 2024 to 11 JUL 2024

EMERG SAFE ALT 100 NM 2800					ELEV 15	TDZE 15
2000 NRB R-081	BENG NRB 11	IKECA 8	MUKOE 10			
TACAN	JERBI 4	1700				
LEBAF 1	1100					
3.01° TCH 48						
CATEGORY	A	B	C	D		
S-23	520-1 505 (600-1)	520-1½ 505 (600-1½)				
CIRCLING	560-1 545 (600-1)	560-1½ 545 (600-1½)	620-2 605 (700-2)			
				REIL Rwy 5-23	HIRL Rwy 5-23	

MAYPORT, FLORIDA 30°23'N-81°25'W MAYPORT NS (ADM DAVID L. MC DONALD FLD) (KNRB)

Amtd 5 07OCT21

# TACAN Y RWY 23