

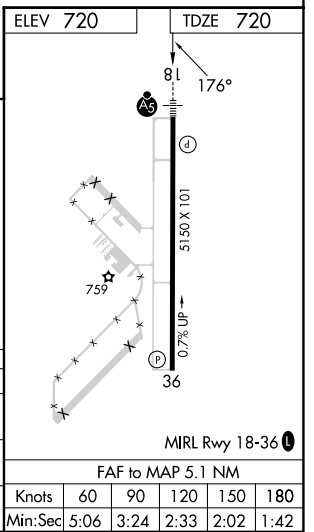
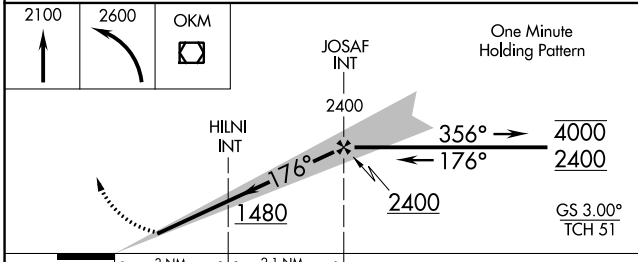
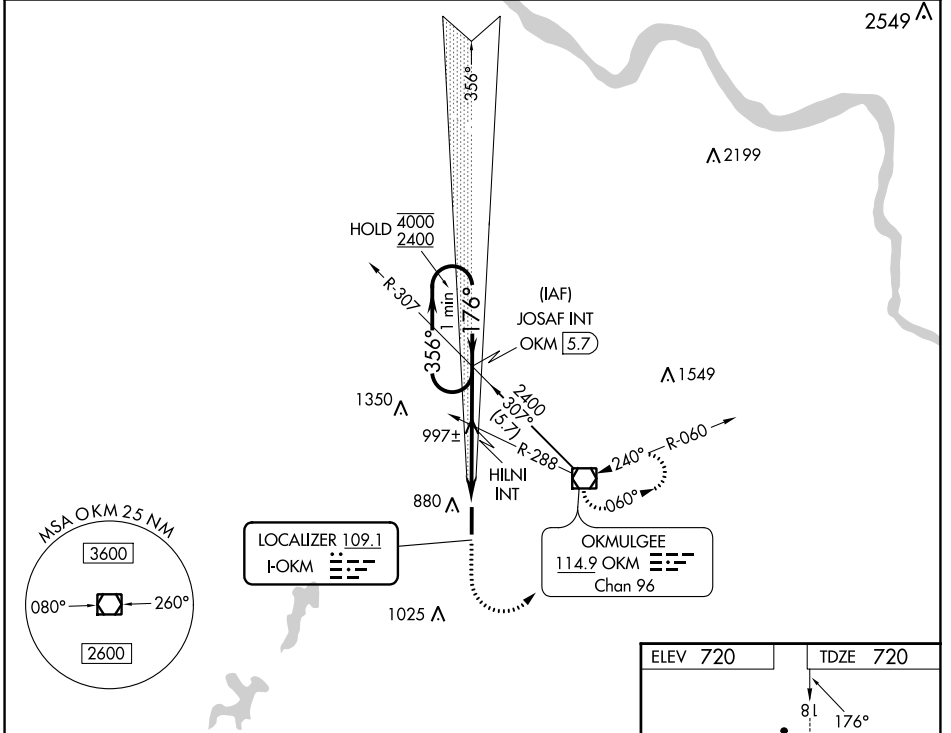
LOC I-OKM <b>109.1</b>	APP CRS <b>176°</b>	Rwy ldg <b>5150</b> TDZE <b>720</b> Apt Elev <b>720</b>
---------------------------	------------------------	--

# ILS or LOC RWY 18

OKMULGEE RGNL/PAUL AND BETTY ABBOTT FLD (OKM)

<p><b>▼</b> For inop ALS, increase S-ILS all Cats visibility to 3/4 SM, increase S-LOC Cats A and B visibility to 1 SM, and S-LOC Cat C visibility to 1 1/2 SM.</p> <p><b>▲ NA</b></p>	<p>MALSR</p>	<p>MISSED APPROACH: Climb to 2100 then climbing left turn to 2600 direct OKM VOR/DME and hold, continue climb-in-hold to 2600.</p>
--	--------------	--

AWOS-3PT <b>118.225</b>	TULSA APP CON <b>119.85 338.3</b>	UNICOM <b>123.0 (CTAF) ①</b>
----------------------------	--------------------------------------	---------------------------------



CATEGORY	A	B	C	D
S-ILS 18	920-1/2	200 (200-1/2)		NA
S-LOC 18	1260-1/2	540 (600-1/2)	1260-1 540 (600-1)	NA
<b>☐</b> CIRCLING	1320-1 600 (600-1)	1340-1 620 (700-1)	1340-1 3/4 620 (700-1 3/4)	NA

SC-1, 13 JUN 2024 to 11 JUL 2024

SC-1, 13 JUN 2024 to 11 JUL 2024