

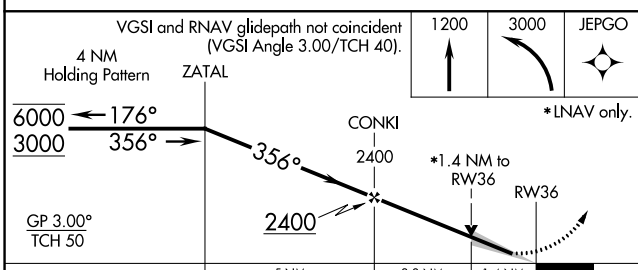
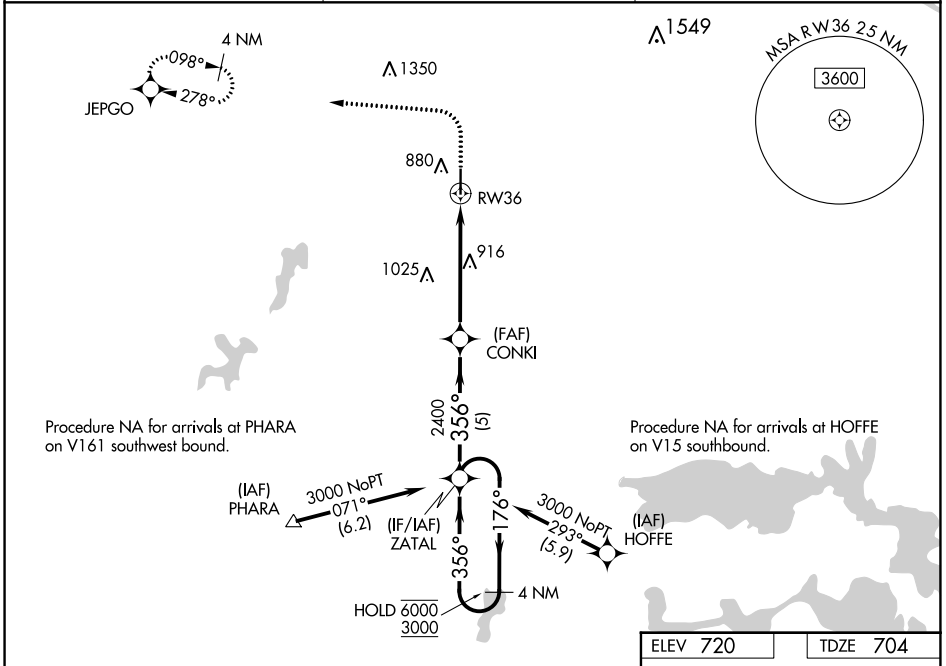
WAAS CH 69242 W36A	APP CRS 356°	Rwy Idg TDZE Apt Elev	5150 704 720
--	------------------------	-----------------------------	---

RNAV (GPS) RWY 36

OKMULGEE RGNL/PAUL AND BETTY ABBOTT FLD (OKM)

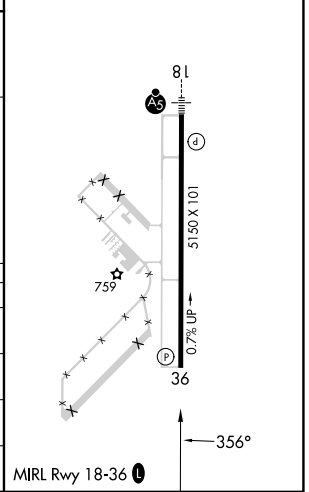
RNP APCH-GPS.	MISSED APPROACH: Climb to 1200, then climbing left turn to 3000 direct JEPGO and hold.
<p>For uncompensated Baro-VNAV systems, LNAV/VNAV NA below -24°C or above 45°C.</p>	

AWOS-3PT 118.225	TULSA APP CON 119.85 338.3	UNICOM 123.0 (CTAF) 0
----------------------------	--------------------------------------	---------------------------------



ELEV 720	TDZE 704
----------	----------

CATEGORY	A	B	C	D
LPV DA		904- ³ / ₄	200 (200- ³ / ₄)	
LNAV/VNAV DA		991- ⁷ / ₈	287 (300- ⁷ / ₈)	
LNAV MDA	1180-1	476 (500-1)	1180-1 ³ / ₈	476 (500-1 ³ / ₈)
CIRCLING	1240-1 520 (600-1)	1340-1 620 (700-1)	1340-1 ³ / ₄ 620 (700-1 ³ / ₄)	1640-3 920 (1000-3)



RNAV (GPS) RWY 36

SC-1, 13 JUN 2024 to 11 JUL 2024

SC-1, 13 JUN 2024 to 11 JUL 2024