

VOR/DME OKM <b>114.9</b> Chan <b>96</b>	APP CRS <b>240°</b>	Rwy Idg TDZE Apt Elev	<b>N/A</b> <b>N/A</b> <b>720</b>
---	------------------------	-----------------------------	--

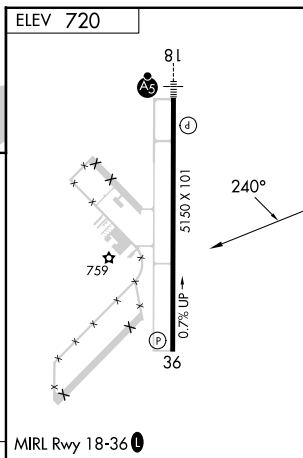
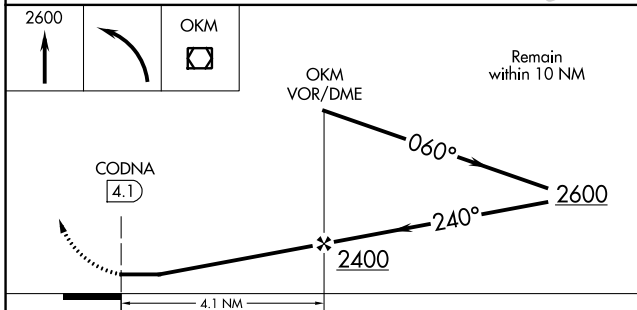
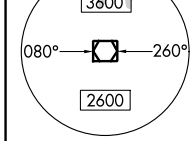
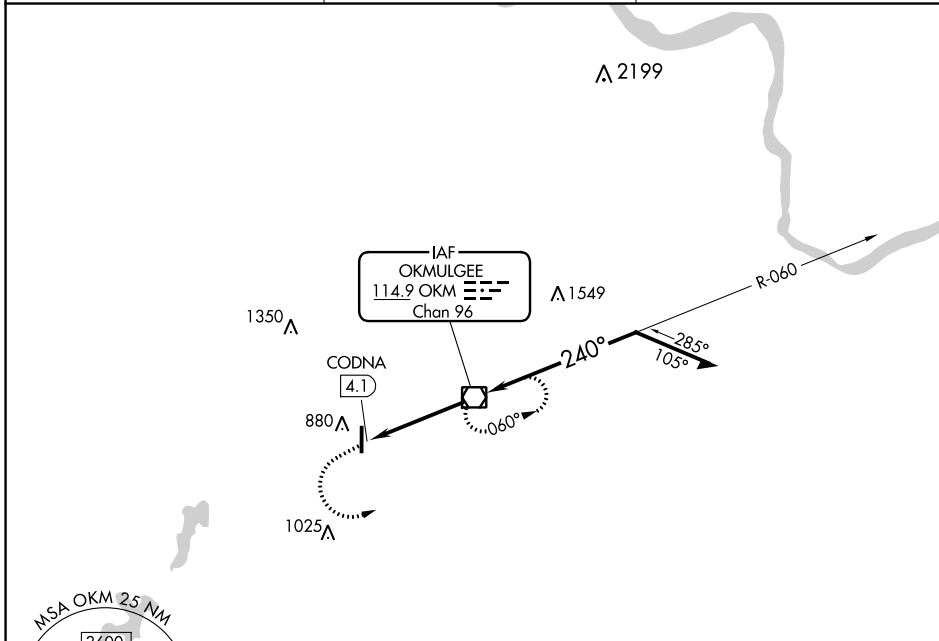
# VOR-A

OKMULGEE RGNL/PAUL AND BETTY ABBOTT FLD (OKM)

**NA** When local altimeter setting not received, use Tulsa Intl altimeter setting: Increase all MDAs 80 feet and visibility Cat C ¼ SM.

MISSED APPROACH: Climb to 2600 then left turn direct OKM VOR/DME and hold.

AWOS-3PT <b>118.225</b>	TULSA APP CON <b>119.85 338.3</b>	UNICOM <b>123.0 (CTAF) 0</b>
----------------------------	--------------------------------------	---------------------------------



CATEGORY	FAF to MAP 4.1 NM			
	A	B	C	D
<b>CIRCLING</b>	1240-1 520 (600-1)	1340-1 620 (700-1)	1340-1¾ 620 (700-1¾)	NA
	Knots: 60	Knots: 90	Knots: 120	Knots: 150
	Min:Sec: 4:06	Min:Sec: 2:44	Min:Sec: 2:03	Min:Sec: 1:38
				Min:Sec: 1:22

# VOR-A

SC-1, 13 JUN 2024 to 11 JUL 2024

SC-1, 13 JUN 2024 to 11 JUL 2024