

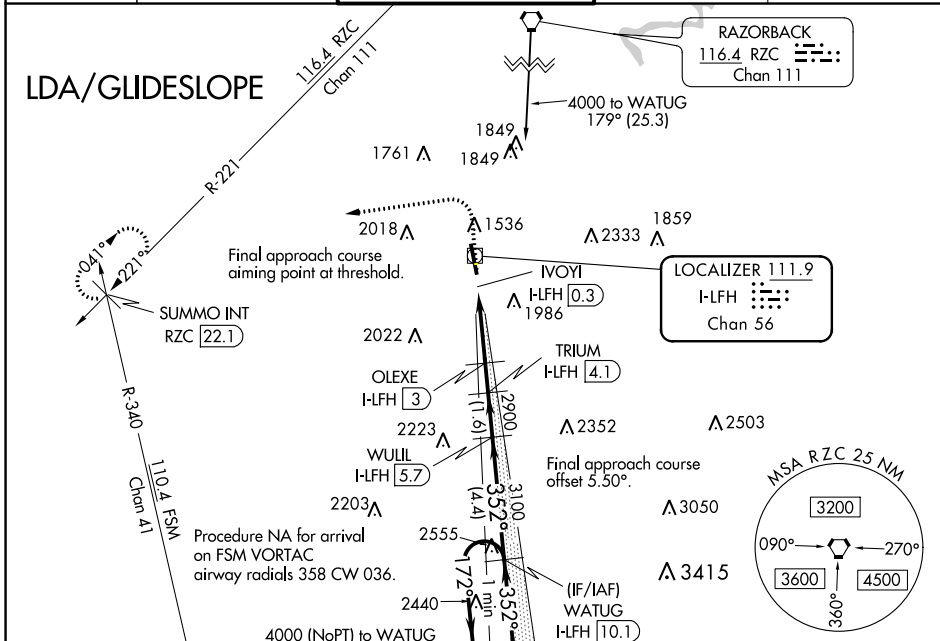
LOC/DME I-LFH <b>111.9</b> Chan 56	APP CRS <b>352°</b>	Rwy Idg TDZE Apt Elev	<b>6005</b> <b>1241</b> <b>1252</b>
------------------------------------------	------------------------	-----------------------------	-------------------------------------------

# LDA RWY 34

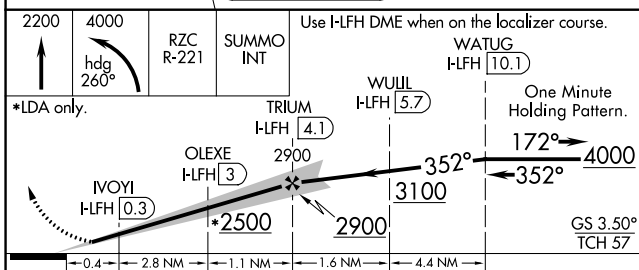
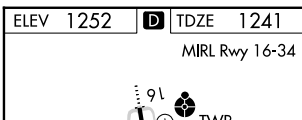
DRAKE FLD (FYV)

DME required for procedure entry.		ODALS	MISSED APPROACH: Climb to 2200 then climbing left turn to 4000 on heading 260° and on RZC VORTAC R-221 to SUMMO INT/ RZC 22.1 DME and hold.
<p>⚠ Inop table does not apply. Circling NA east of Rwy 16-34.                  ⚠ Rwy 34 helicopter visibility reduction below 3/4 SM NA.</p>			

ATIS <b>119.575</b>	RAZORBACK APP CON* <b>121.0 244.575</b>	DRAKE TOWER* <b>128.0 (CTAF) 0 371.9</b>	GND CON <b>121.8</b>	UNICOM <b>122.95</b>
------------------------	--------------------------------------------	---------------------------------------------	-------------------------	-------------------------



ELEV 1252	TDZE 1241
MIRL Rwy 16-34	



CATEGORY	A	B	C	D
S-LDA/GS 34	1593-1¼ 352 (400-1¼)			NA
S-LDA 34	2020-1¼ 779 (800-1¼)	2020-1½ 779 (800-1½)	2020-2½ 779 (800-2½)	NA
CIRCLING	2020-1¼ 768 (800-1¼)	2020-1½ 768 (800-1½)	2320-3 1068 (1100-3)	NA

SC-1, 13 JUN 2024 to 11 JUL 2024

SC-1, 13 JUN 2024 to 11 JUL 2024