

WAAS CH 78003 W35A	APP CRS 353°	Rwy ldg TDZE 177 Apt Elev 234	11759
---------------------------------	------------------------	---	--------------

RNAV (GPS) RWY 35

PLATTSBURGH INTL (PBG)

⚠ For uncompensated Baro-VNAV systems, LNAV/VNAV NA below -18°C (0°F) or above 54°C (130°F). DME/DME RNP-0.3 NA. For inop MALSR, increase LPV and LNAV/VNAV all Cats visibility to ¾ mile. For inop MALSR when using Burlington altimeter setting, increase LPV and LNAV/VNAV all Cats visibility to 1 mile. When local altimeter setting not received, use Burlington altimeter setting and increase all DA 54 feet and all MDA 60 feet; increase LPV and LNAV/VNAV all Cats visibility to ¾ mile, LNAV Cats C, D visibility to 1¼ mile, and increase Circling Cats C/D visibility ¼ mile. VDP and Baro-VNAV NA when using Burlington Intl altimeter setting.

MALSRL

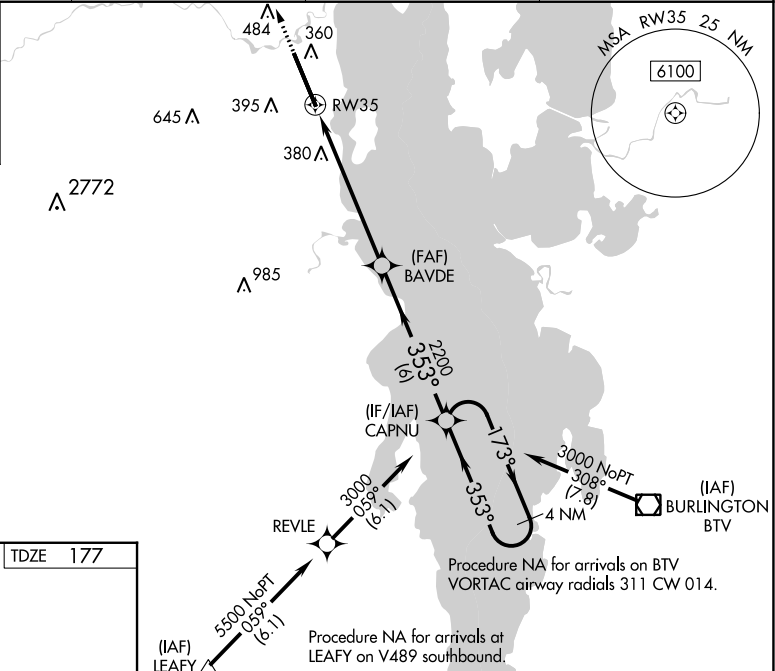
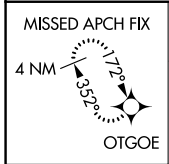
MISSED APPROACH:
Climb to 3500 direct OTGOE and hold, continue climb-in-hold to 3500.

ASOS 132.225

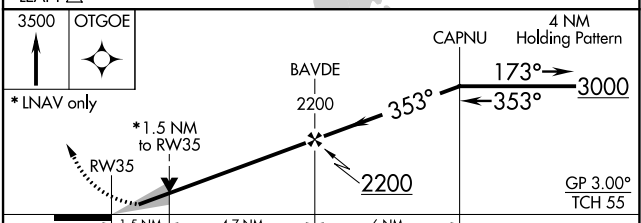
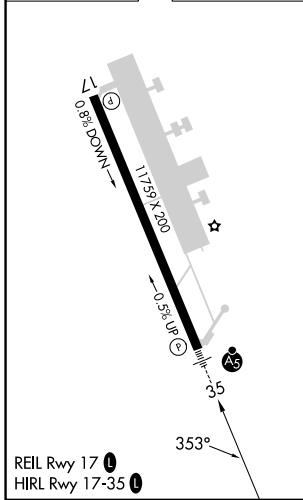
BURLINGTON APP CON ★ 121.1 278.8
--

CINC DEL 121.85

UNICOM 122.7 (CTAF) 0



ELEV 234	D	TDZE 177
----------	----------	----------



CATEGORY	A	B	C	D
LPV DA		427-½	250 (200-½)	
LNAV/VNAV DA		434-½	257 (200-½)	
LNAV MDA	700-½	523 (500-½)	700-1	523 (500-1)
C CIRCLING	720-1	740-1	800-1½	960-2¼
	486 (600-1)	506 (600-1)	566 (700-1½)	726 (800-2¼)

NE-2, 13 JUN 2024 to 11 JUL 2024

NE-2, 13 JUN 2024 to 11 JUL 2024