


LOC I-OSH 110.5	APP CRS 004°	Rwy Idg 8002
		TDZE 808
		Apt Elev 808

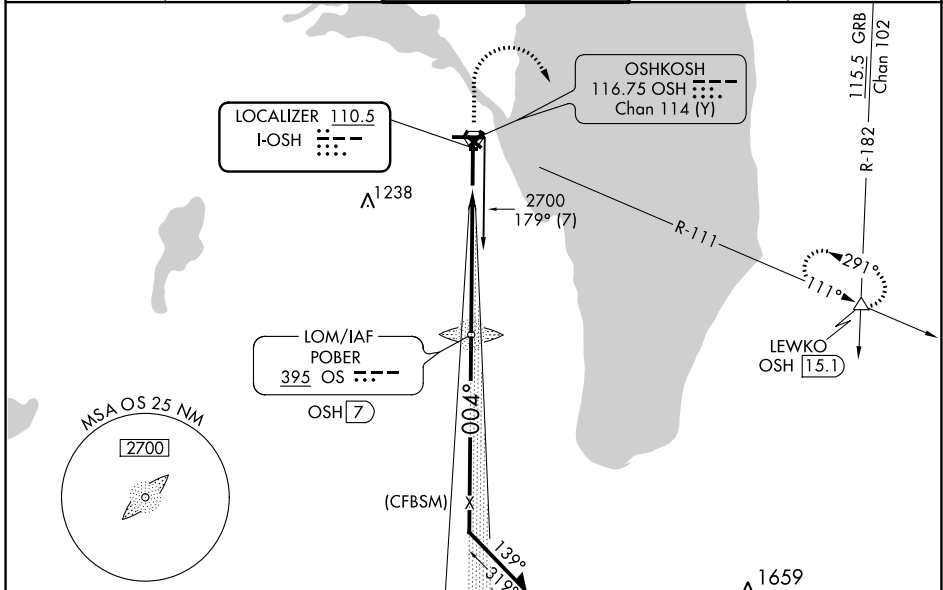
ILS or LOC RWY 36

WITTMAN RGNL (OSH)

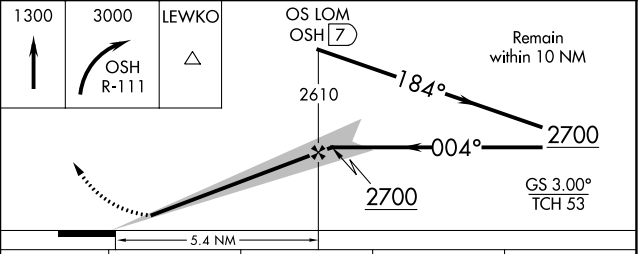
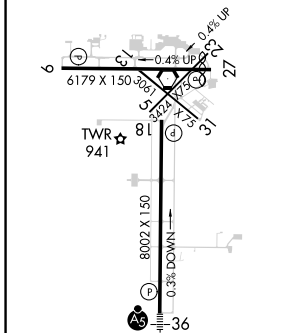
⚠ When local altimeter setting not received, use Fond Du Lac altimeter setting and increase DA 31 feet and all MDA 40 feet; increase S-LOC 36 Cat C/D and Circling Cat C/D visibilities ¼ mile. For inop MALSRL when using Fond Du Lac altimeter setting, increase S-LOC 36 Cat C/D visibility to 1½ mile. Circling to Rwy 5, 23, and 31 NA at night.
 * RVR 1800 authorized with the use of FD or AP or HUD to DA, NA when using Fond Du Lac altimeter setting.

MALSRL

MISSED APPROACH: Climb to 1300 then climbing right turn to 3000 on OSH R-111 to LEWKO INT/OSH 15 DME and hold.

ATIS 125.9	MILWAUKEE APP CON 127.0 263.075	OSHKOSH TOWER ★ 118.5 (CTAF) 290.9	GND CON 132.3	UNICOM 122.95
----------------------	---	--	-------------------------	-------------------------



ELEV 808	D	TDZE 808
-----------------	----------	-----------------



FAF to MAP 5.4 NM						
Knots	60	90	120	150	180	
Min:Sec	5:24	3:36	2:42	2:10	1:48	
C CIRCLING	1340-1	532 (600-1)	1360-1½	552 (600-1½)	1440-2	632 (700-2)
S-ILS 36 *	1008/24 200 (200-½)					
S-LOC 36	1340/24	532 (600-½)	1340/55	532 (600-1)		

EC-3, 13 JUN 2024 to 11 JUL 2024

EC-3, 13 JUN 2024 to 11 JUL 2024