

| | | | |
|--|------------------------|---|-------------|
| WAAS CH 93534 W27A | APP CRS 274° | Rwy Idg TDZE 786 Apt Elev 808 | 5648 |
|--|------------------------|---|-------------|

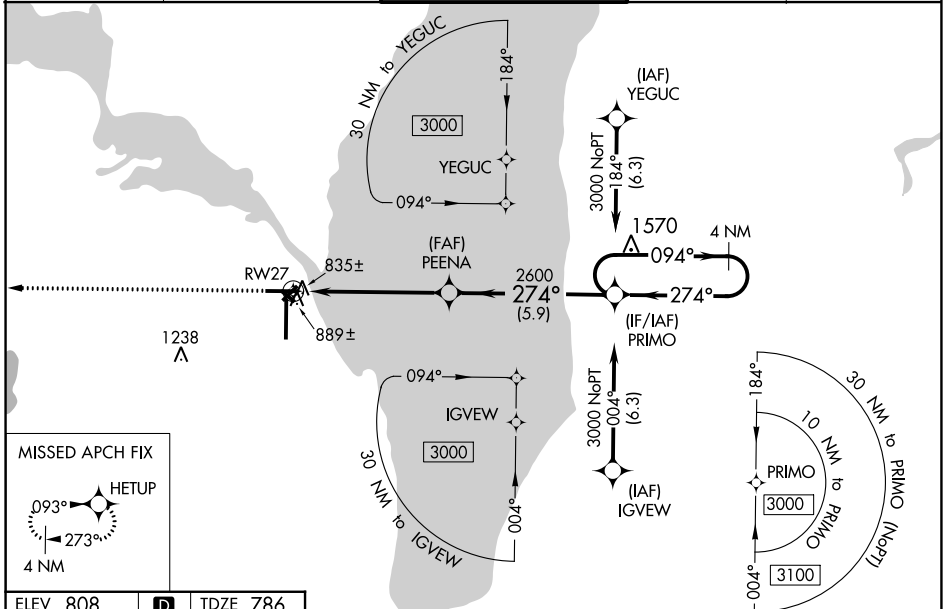
RNAV (GPS) RWY 27

WITTMAN RGNL (OSH)

⚠ For uncompensated Baro-VNAV systems, LNAV/VNAV NA below -20°C (-4°F) or above 54°C (130°F). DME/DME RNP-0.3 NA. When local altimeter setting not received, use Fond Du Lac altimeter setting and increase all DA 31 feet and all MDA 40 feet; increase LPV and LNAV/VNAV all Cats visibility and LNAV Cats C and D visibility ½ mile, increase Circling Cat D ¼ mile. Baro-VNAV and VDP NA with Fond Du Lac altimeter setting. Circling to Rwy 5, 23, and 31 NA at night. Helicopter visibility reduction below ¾ SM NA.

MISSED APPROACH:
Climb to 3000 direct HETUP and hold.

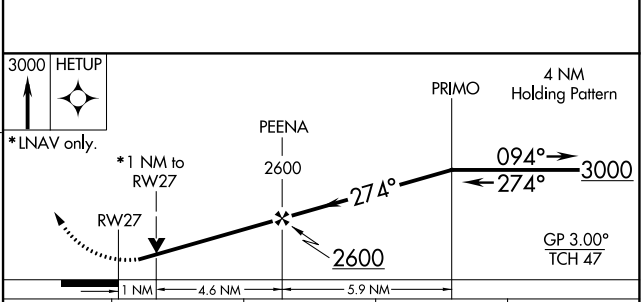
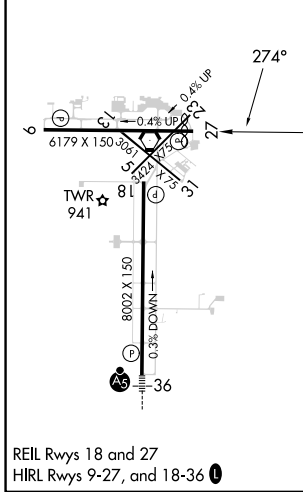
| | | | | |
|----------------------|---|--|-------------------------|-------------------------|
| ATIS 125.9 | MILWAUKEE APP CON 127.0 263.075 | OSHKOSH TOWER ★ 118.5 (CTAF) 0 290.9 | GND CON 132.3 | UNICOM 122.95 |
|----------------------|---|--|-------------------------|-------------------------|



EC-3, 13 JUN 2024 to 11 JUL 2024

EC-3, 13 JUN 2024 to 11 JUL 2024

| | | |
|-----------------|----------|-----------------|
| ELEV 808 | D | TDZE 786 |
|-----------------|----------|-----------------|



| CATEGORY | A | B | C | D |
|-------------------|-----------------------|-----------------------|-------------------------|-----------------------|
| LPV DA | | 1036-¾ | 250 (300-¾) | |
| LNAV/VNAV DA | | 1078-1 | 292 (300-1) | |
| LNAV MDA | | 1140-1 | 354 (400-1) | |
| C CIRCLING | 1280-1 472 (500-1) | 1300-1 492 (500-1) | 1360-1½ 552 (600-1½) | 1440-2 632 (700-2) |