

VORTAC OSH 116.75 Chan 114 (Y)	APP CRS 360°	Rwy Idg TDZE Apt Elev	8002 808 808
--	------------------------	-----------------------------	---

VOR RWY 36

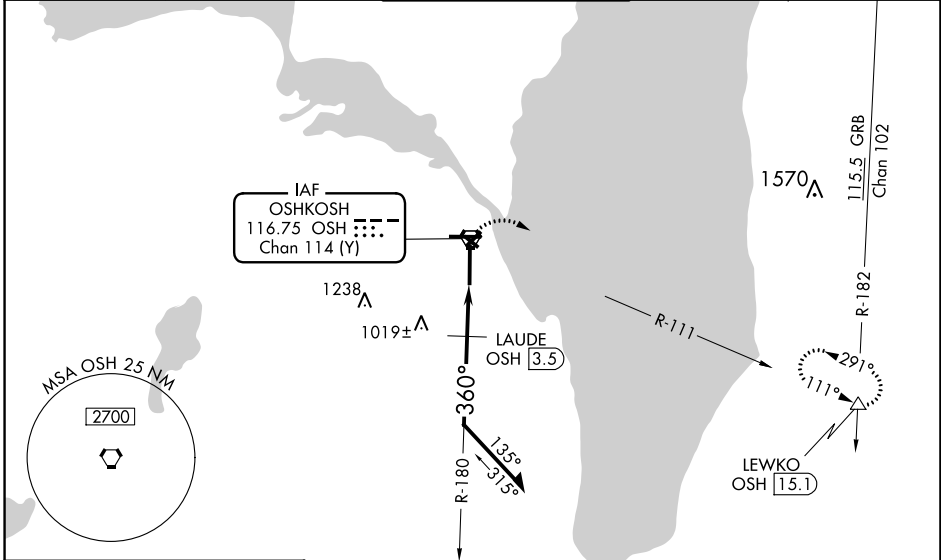
WITTMAN RGNL (OSH)

⚠ Circling to Rwy 5, 23, and 31 NA at night. When local altimeter setting not received, use Fond Du Lac altimeter setting and increase all MDA 40 feet; increase S-36 Cats C/D visibility and, Circling Cat C visibility $\frac{1}{8}$ mile, increase Circling Cat D visibility $\frac{1}{4}$ mile, LAUDE fix minimums increase S-36 Cats C/D visibility to RVR 5500 and Circling Cat D visibility to $2\frac{1}{4}$ mile. For inop MALSRL, when using Fond Du Lac altimeter setting, increase LAUDE fix minimums S-36 Cats C/D visibility to $1\frac{3}{8}$ mile. VDP NA with Fond Du Lac altimeter setting.

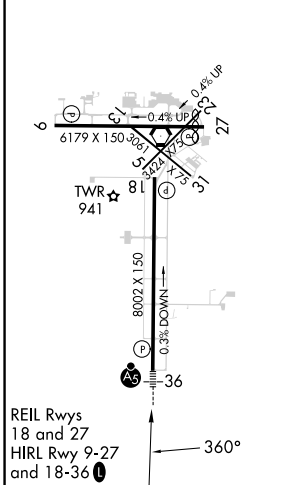
MALSRL

MISSED APPROACH:
Climbing right turn to 3000 on OSH VORTAC R-111 to LEWKO INT/ OSH 15.1 DME and hold.

ATIS 125.9	MILWAUKEE APP CON 127.0 263.075	OSHKOSH TOWER ★ 118.5 (CTAF) 290.9	GND CON 132.3	UNICOM 122.95
----------------------	---	--	-------------------------	-------------------------



ELEV 808	D	TDZE 808
-----------------	----------	-----------------



3000 LEWKO (triangle symbol)

OSHKOSH VORTAC 6000

Remain within 10 NM

*1500 when using Fond Du Lac altimeter setting.

OSHKOSH 2.9, LAUDE OSH 3.5, 2300, 1460, 180°, 360°, 1.3 NM, 0.6 NM

CATEGORY	A	B	C	D
S-36	1460/24	652 (700- $\frac{1}{2}$)	1460- $1\frac{3}{8}$	652 (700- $1\frac{3}{8}$)
C CIRCLING	1460-1	652 (700-1)	1460- $1\frac{7}{8}$ 652 (700- $1\frac{7}{8}$)	1460-2 652 (700-2)
LAUDE FIX MINIMUMS				
S-36	1280/24	472 (500- $\frac{1}{2}$)	1280/50	472 (500-1)
C CIRCLING	1280-1 472 (500-1)	1300-1 492 (500-1)	1360- $1\frac{1}{2}$ 552 (600- $\frac{1}{2}$)	1440-2 632 (700-2)

EC-3, 13 JUN 2024 to 11 JUL 2024

EC-3, 13 JUN 2024 to 11 JUL 2024